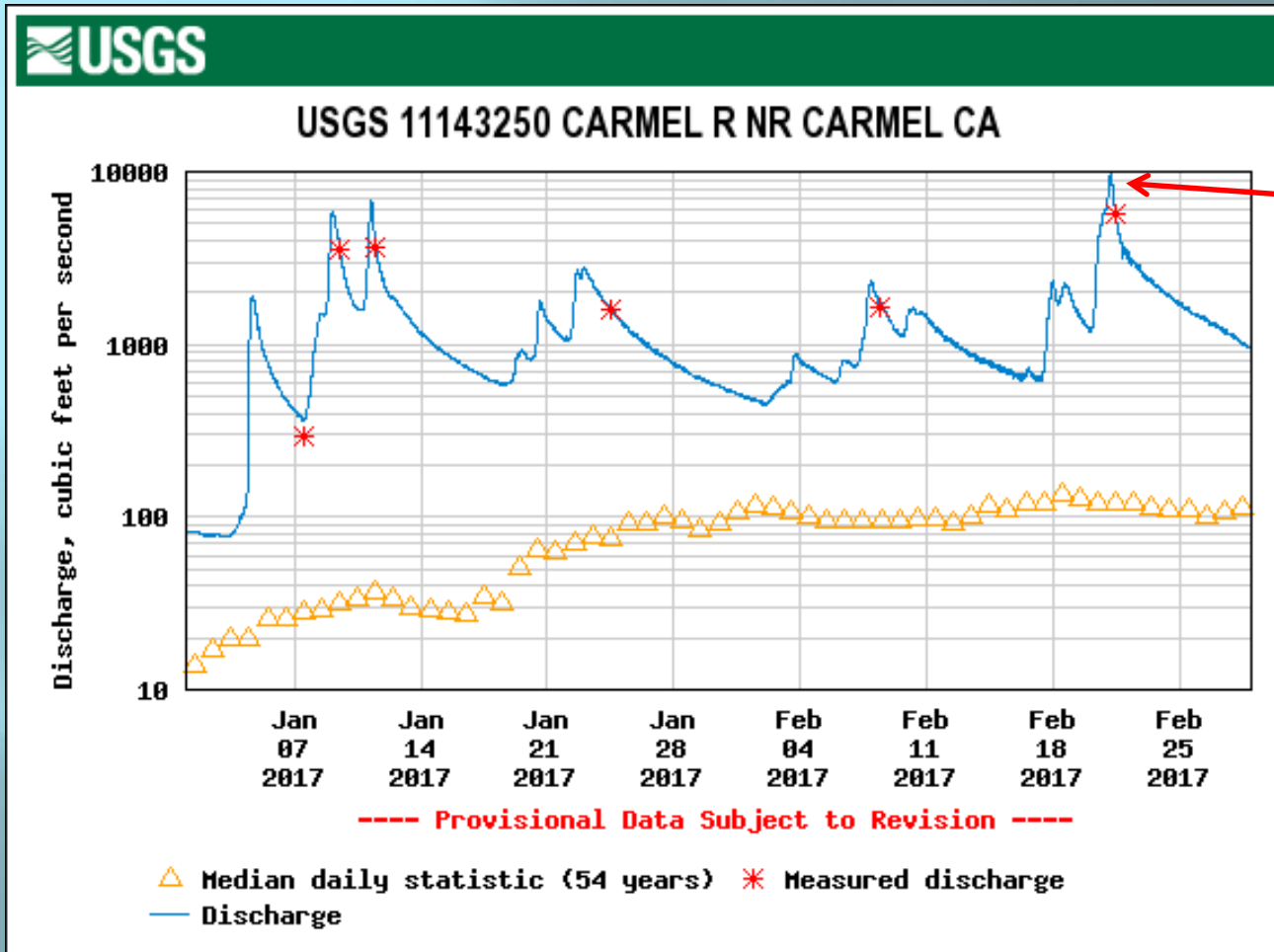


## **ACTION ITEM 13**

**CONSIDER CONTRACT WITH  
WHITSON ENGINEERS TO CONDUCT A  
SURVEY OF THE CARMEL RIVER  
CHANNEL**

*Meeting Date: May 15, 2017  
Staff contact: Larry Hampson*

# 2016-17 Carmel River Winter Flows

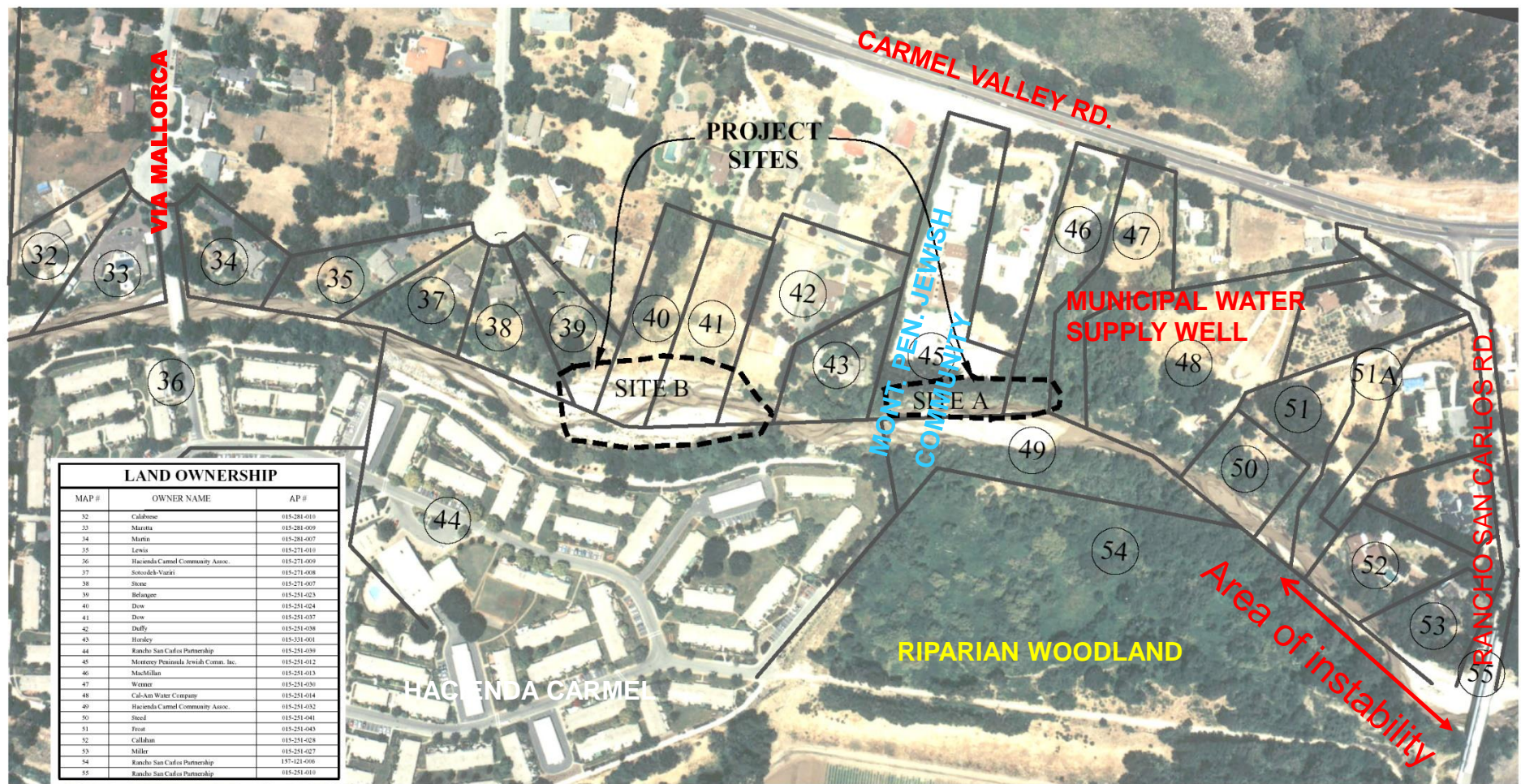


- 9,570 cfs at 5 am on Feb. 21, 2017
- Fifth-highest flow since recording began in 1958
- Came after a series of previous high flows

# Downstream of Rancho San Carlos Road Bridge



# CARMEL RIVER - SAN CARLOS MONITORING SITE RESTORATION PROJECT PROJECT AREA AND NEIGHBORING PARCEL LOCATIONS



LAND OWNERSHIP		
MAP #	OWNER NAME	AP #
32	Calabrese	015-281-010
33	Maritta	015-281-009
34	Marin	015-281-007
35	Levin	015-271-010
36	Hacienda Carmel Community Assoc.	015-271-009
37	Sorosch-Vaziri	015-271-008
38	Stane	015-271-007
39	Belangee	015-251-023
40	Dow	015-251-024
41	Dow	015-251-007
42	Duffy	015-251-008
43	Hartley	015-251-001
44	Rancho San Carlos Partnership	015-251-009
45	Monterey Peninsula Jewish Comm. Inc.	015-251-012
46	MacMillan	015-251-013
47	Werner	015-251-020
48	Cal-Am Water Company	015-251-014
49	Hacienda Carmel Community Assoc.	015-251-002
50	Steele	015-251-041
51	Frost	015-251-045
52	Callahan	015-251-028
53	Miller	015-251-027
54	Rancho San Carlos Partnership	157-121-006
55	Rancho San Carlos Partnership	015-251-010

AERIAL PHOTO DATE: JULY 7, 1999

DESIGNED BY	DATE	REV. DATE	PREPARED FOR	CARMEL RIVER SAN CARLOS MONITORING SITE RESTORATION PROJECT MONTEREY COUNTY, CALIFORNIA	PLANS PREPARED UNDER SUPERVISION OF	 <b>GMA</b> GRAHAM MATTHEWS & ASSOCIATES Hydrology • Geomorphology • Stream Restoration P.O. Box 1516, Watsonville, CA 95095-1516 (530) 421-5127 ph (530) 625-5728 fax <a href="http://www.gmatools.com">www.gmatools.com</a>	 N	SCALE	SHEET
PREPARED BY	WRN	0/01	MONTEREY PENINSULA WATER MANAGEMENT DISTRICT P.O. BOX 85 MONTEREY, CA 93942					 FEET	2/6

# Restoration Project Benefits

- Preserve mature riparian forest area
- Reduce additional bank erosion and movement of sediment and trees downstream that could threaten several homes and the Congregation Beth Israel synagogue on the north side of the river and the 300-unit Hacienda Carmel retirement community
- Increase streamside habitat and re-establishing some sediment delivery from the upper to lower watershed
- Help to stabilize a historically unstable reach

# Recommendation

- ▣ Authorize the General Manager to amend an existing agreement with Whitson Engineers for survey work to increase the not-to-exceed amount by \$9,000 to conduct a survey in the Carmel River channel.



# FOR MORE INFORMATION

District website:

[www.mpwmd.net](http://www.mpwmd.net)

PowerPoint presentations will be  
posted on the website the day  
after the meeting

Staff contact for this item:

Larry Hampson, District Engineer

[larry@mpwmd.net](mailto:larry@mpwmd.net)

(831) 658-5620