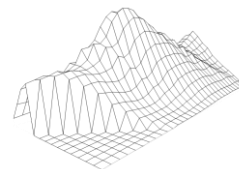


Post-2020 Census Redistricting: Orientation and Recommendation from your Redistricting Advisory Commission (RAC)

MONTEREY PENINSULA WATER MANAGEMENT DISTRICT
MARCH 21, 2022



Shelley Lapkoff, Ph.D. & Jeanne Gobalet, Ph.D.
LAPKOFF & GOBALET DEMOGRAPHIC RESEARCH, INC.

www.demographers.com

Oakland and Saratoga, California

About

Lapkoff &
Gobalet
Demographic
Research, Inc.

LGDR

1990-present: LGDR helped Monterey County jurisdictions district and redistrict

LGDR helped MPWMD move from at-large to by-district elections in 1991

In 2011, MPWMD Director- Division Area boundaries did not need adjusting; populations were still balanced.

LGDR has been providing 2021-22 redistricting services throughout Monterey County

Agenda

- **Overview of Redistricting**
 - What is redistricting?
 - Why redistrict?
 - Current Election Districts (2002)
 - Legal requirements (that demographers follow)
 - Communities of interest
- **RAC Recommended Plan (Plan 4)**

What is Redistricting?

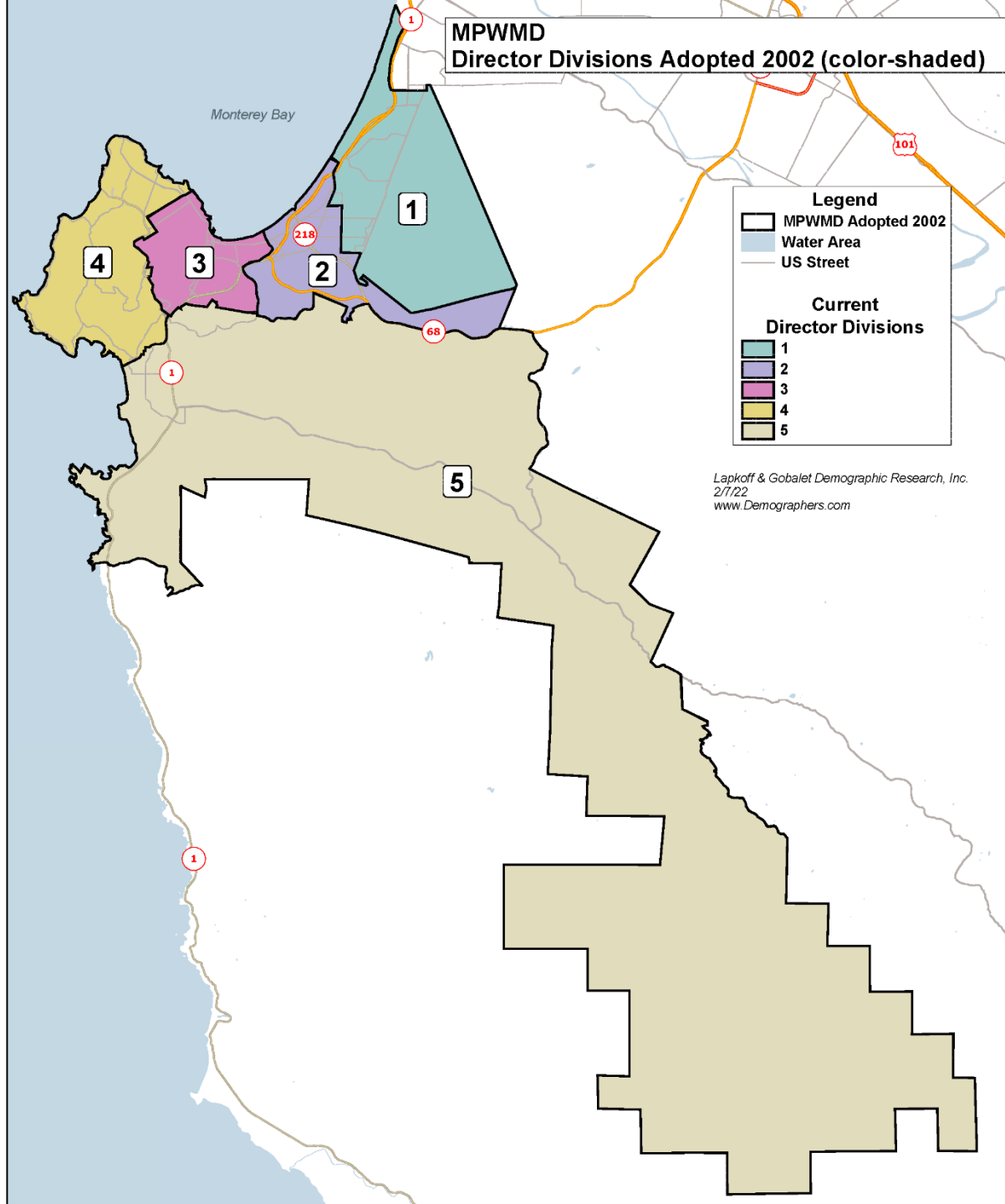
Every 10 years, each jurisdiction that elects board members by Area must redistrict (adjust Area boundaries to have equal total populations)

Federal and state laws apply

Each special district must adopt new election district boundaries before April 17, 2022 (by law)

The new districts will be used until after Census 2030 data are available

Current Directors complete their terms of office even if they no longer live in the Area they were elected to represent



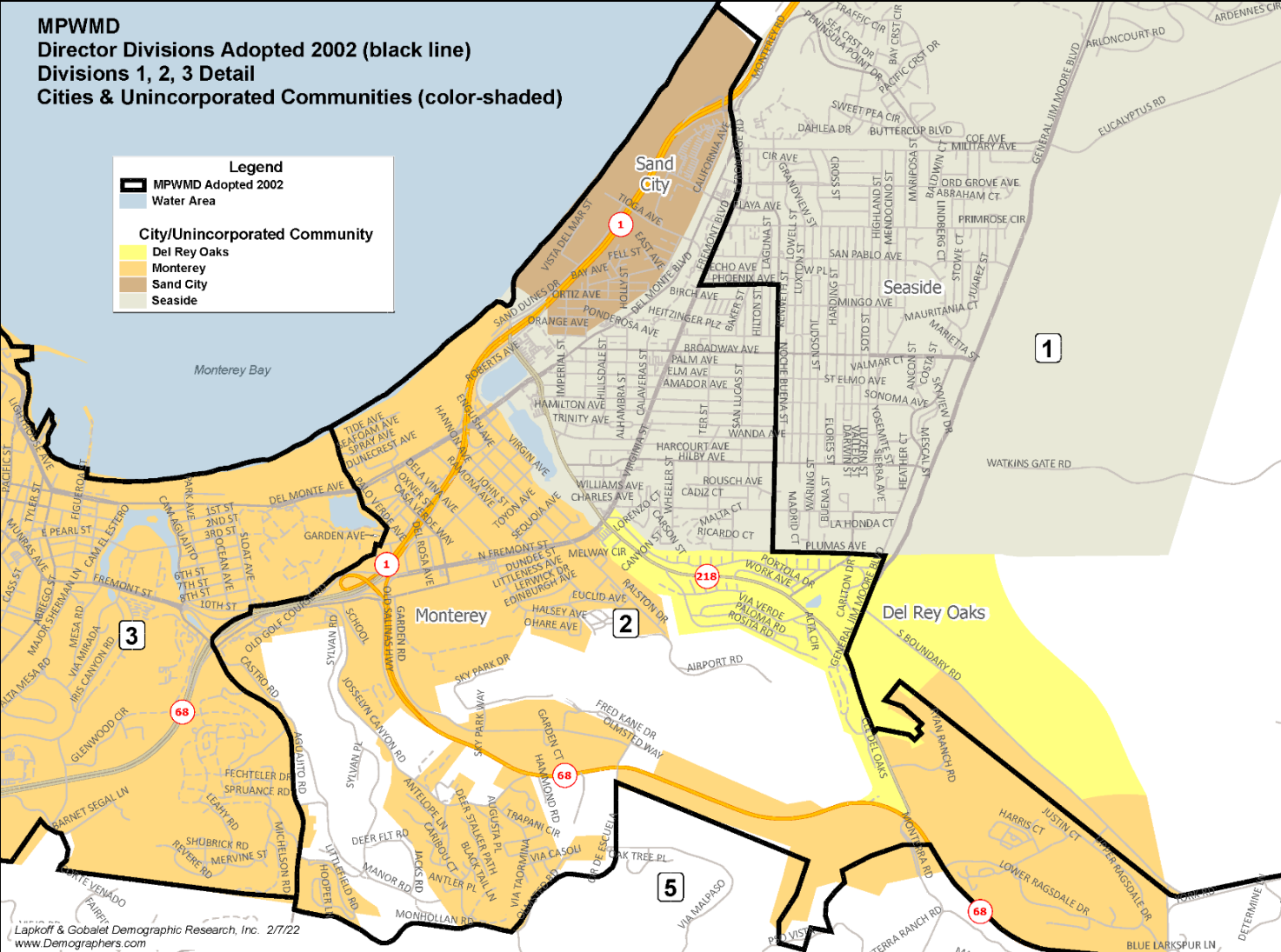
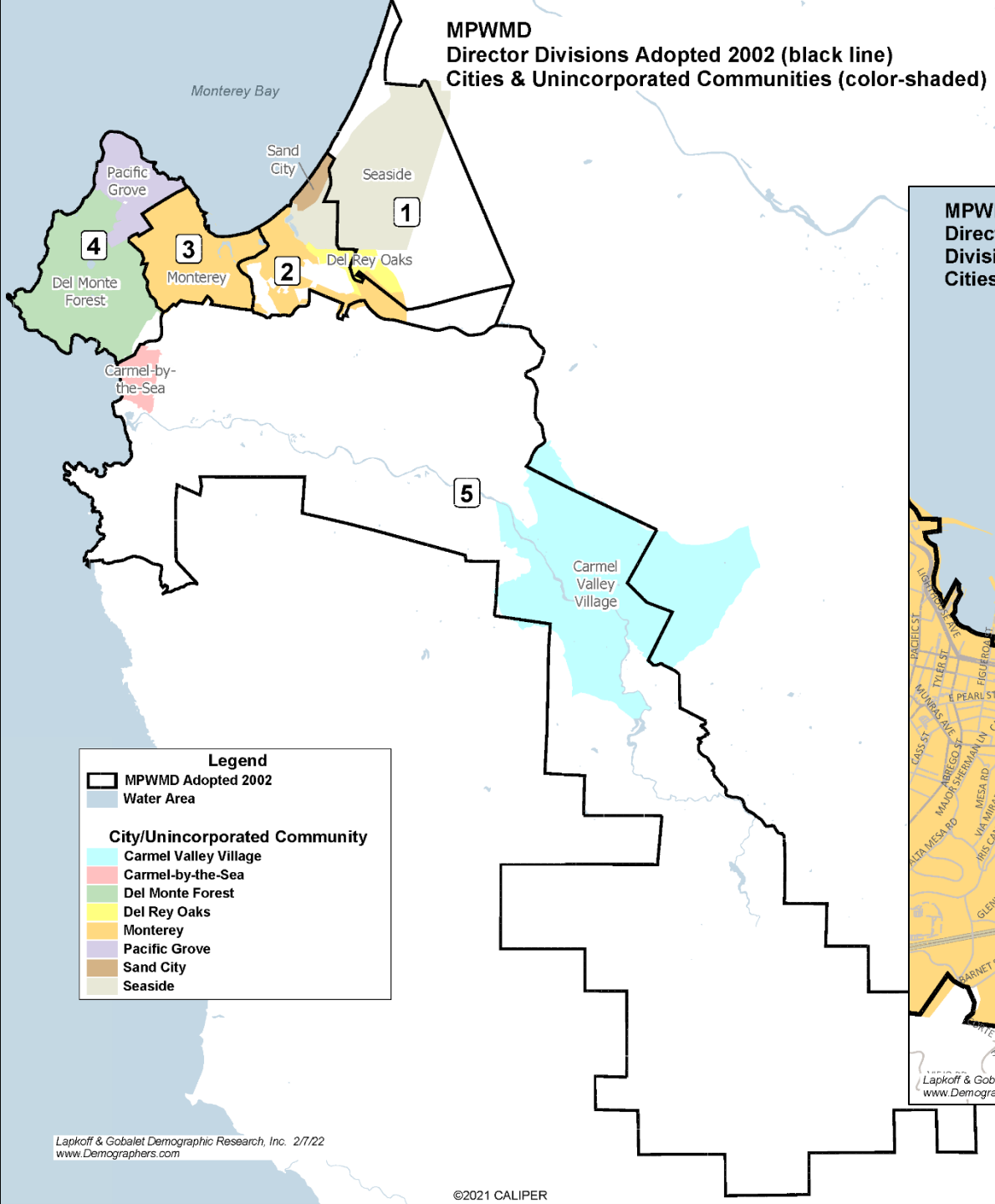
Current MPWMD Election Districts (color-shaded)

adopted in 2002

Director Division
populations were still
balanced in 2010, so
boundaries were not
adjusted

Current MPWMD Election Districts

Cities/Unincorporated Communities (color-shaded)



Legal guidelines that demographers follow:

✓ Federal law & Supreme Court Decisions:

- Population equality
- Voting Rights Act
- No racial gerrymandering

✓ State Election Code



#1 Priority: Population Equality

Election Districts need to be relatively equal in population

Ideal Election District population = $1/5$ of the 2020 Census population:

MPWMD's 105,911 total 2020 population; $1/5 = 21,182$

Plan deviation = Difference between the least and most populous districts, divided by the ideal District population

Up to **10%** deviation is permitted, or 2,118 persons

Census 2020 counts for MPWMD's current election district populations are NOT balanced, so the boundaries needed to be adjusted.

District	Total Pop	Deviation	% Deviation
1	21,904	722	3.4%
2	20,615	-567	-2.7%
3	22,927	1,745	8.2%
4	19,954	-1,228	-5.8%
5	20,511	-671	-3.2%
Total	105,911		
Ideal	21,182	2,973	14.0%

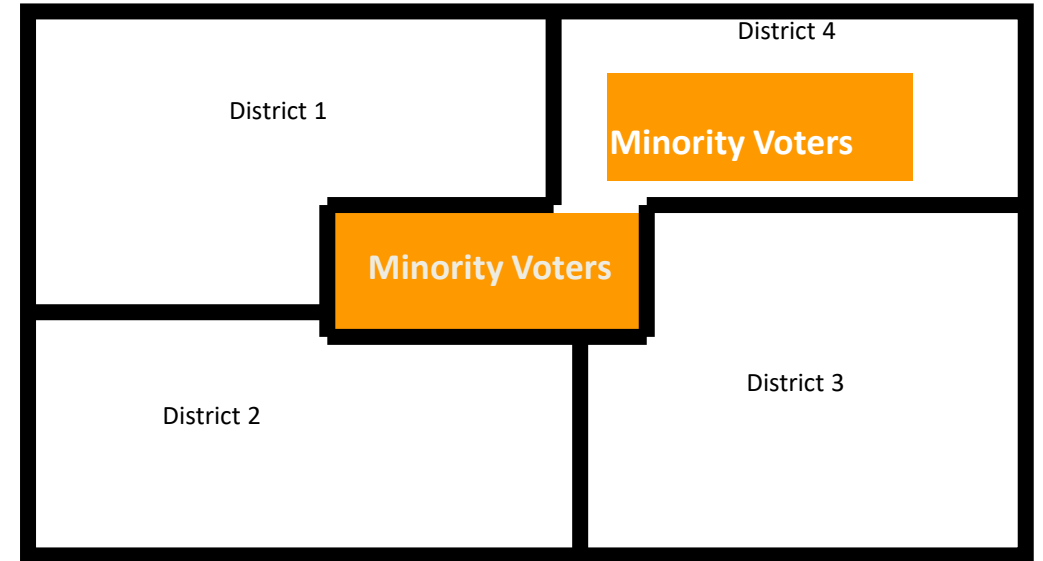
The Federal Voting Rights Act

“Packing” and “Cracking” are prohibited :

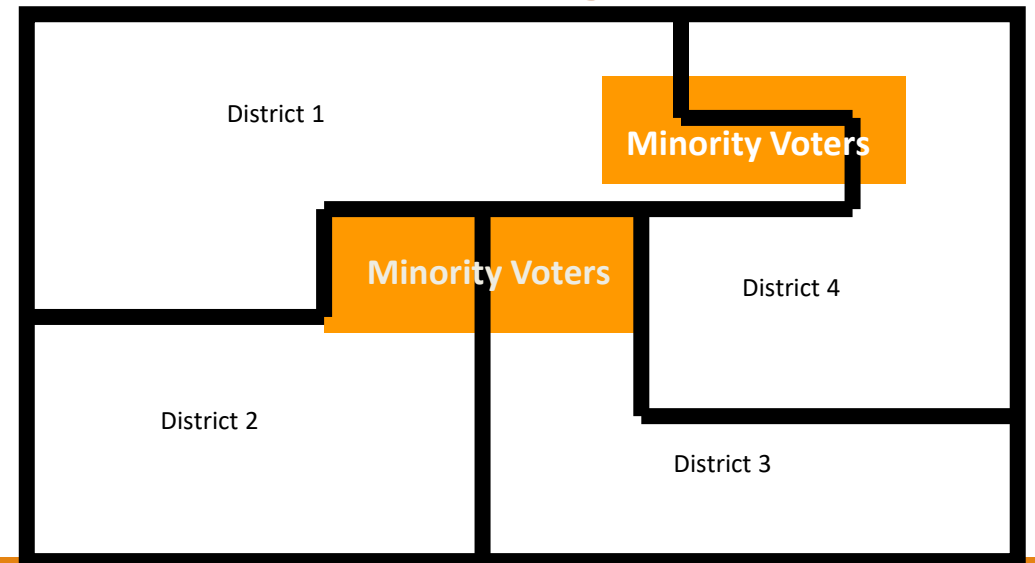
“‘**Packing**’ refers to the practice of filling a district with a supermajority of a given group or party. ‘**Cracking**’ involves the splitting of a group or party among several districts to deny that group or party a majority in any of those districts.”

- *Vieth v. Jubelirer*,
541 U.S. 267, 286 n.7 (2004)

Packing



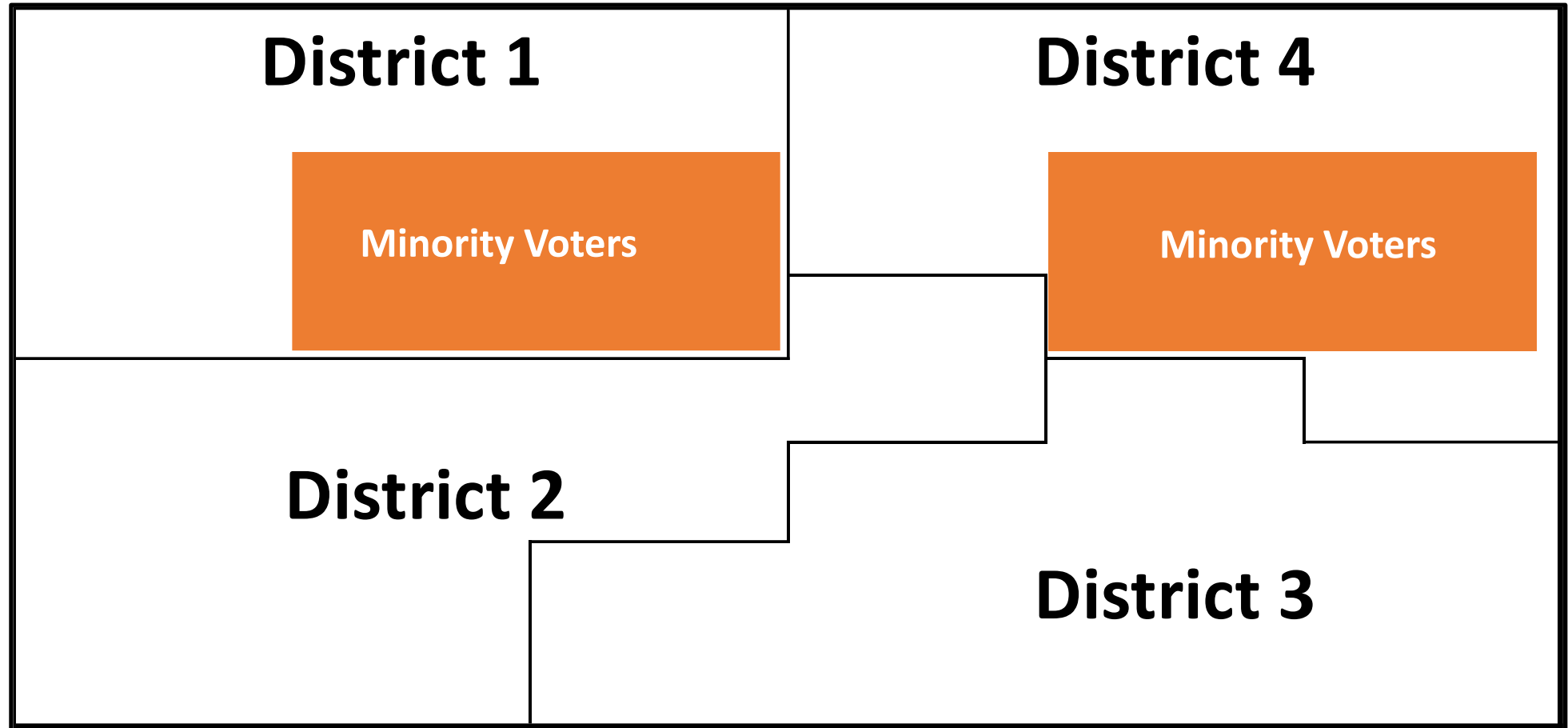
Cracking



Best Practice:

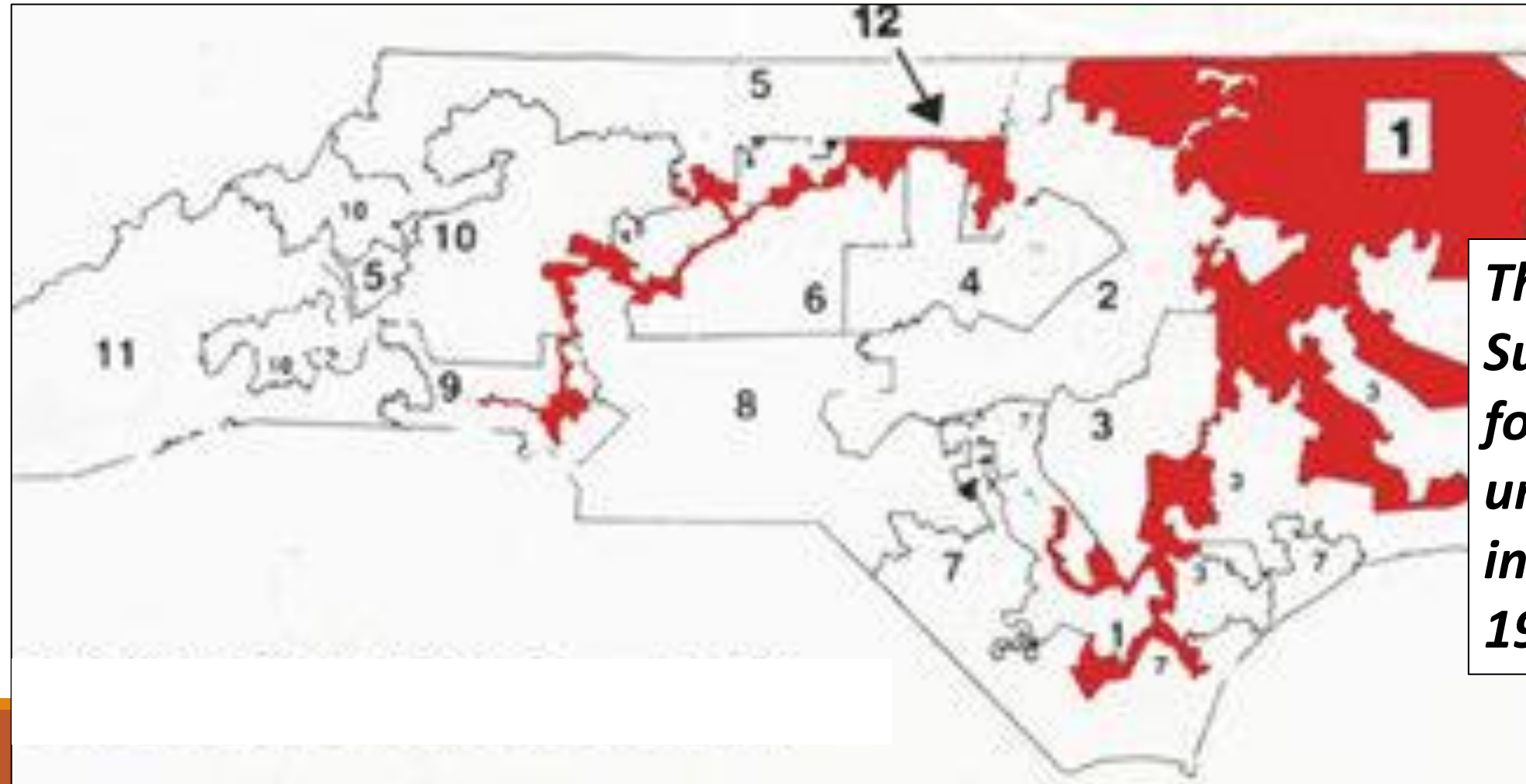
Each orange block represents protected groups intact and in separate election districts

The Federal Voting Rights Act



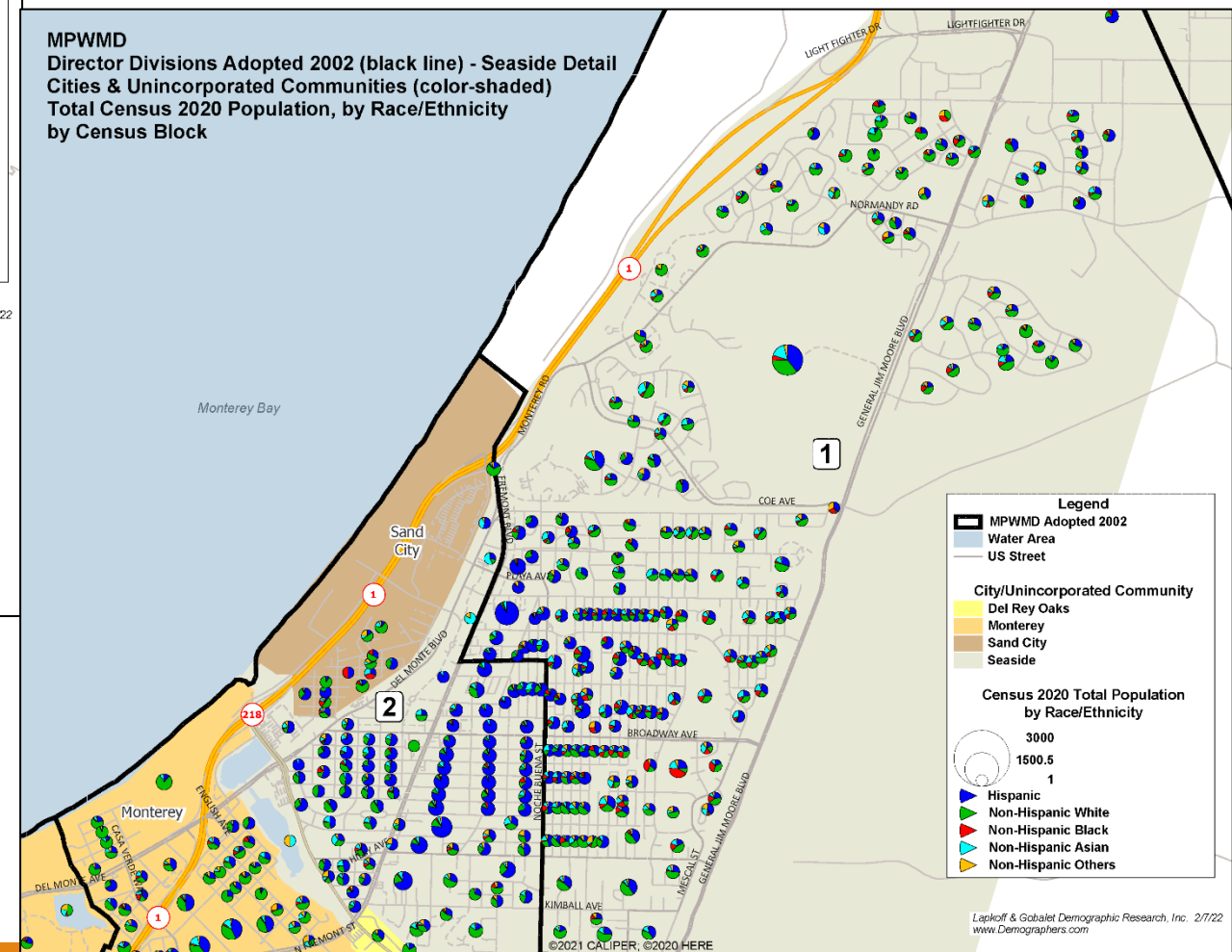
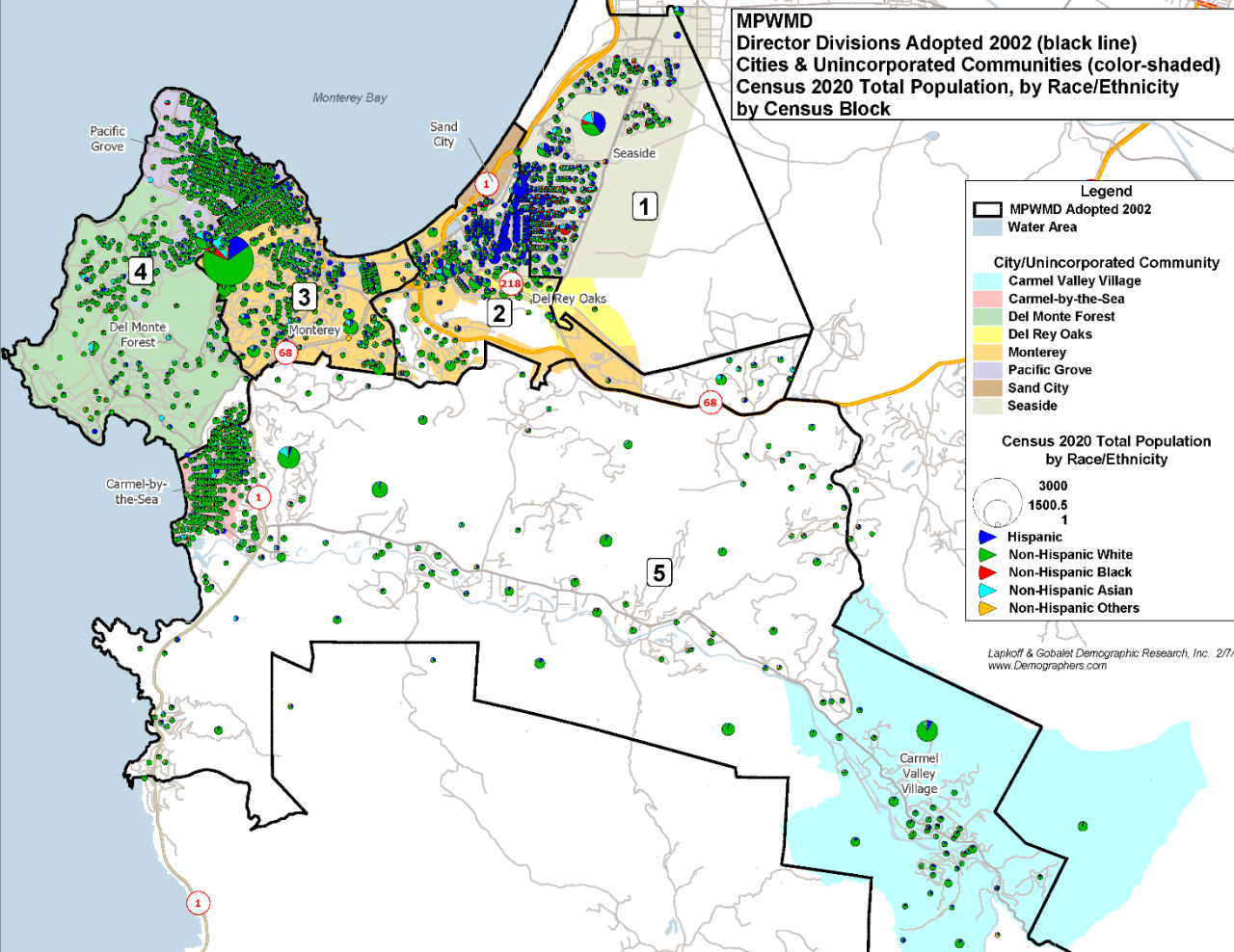
Racial Gerrymandering is not Permitted:

North Carolina's proposed Congressional Districts after Census 1990



The U.S. Supreme Court found District 12 unconstitutional in Shaw v. Reno, 1993

2020 Race/Ethnic Distribution in MPWMD subareas



State Law:

California's Election Code says the following criteria *may* be taken into account. No priority order is given.

...give consideration to the following factors:

(1) Topography

(2) Geography

(3) Cohesiveness, contiguity, integrity, and compactness of territory

(4) Community of interests of director divisions

Communities of Interest (COIs) - Examples

COIs are contiguous areas where people share common social and economic interests and should be in a single Director-Division or be considered when drawing Director-Division boundaries:

- ☐ **Recognized neighborhoods**
- ☐ **Cities and unincorporated communities**
- ☐ **Areas with similar living standards, including similar income and educational levels**

Recommendation from Your Redistricting Advisory Commission (RAC)

RAC Process

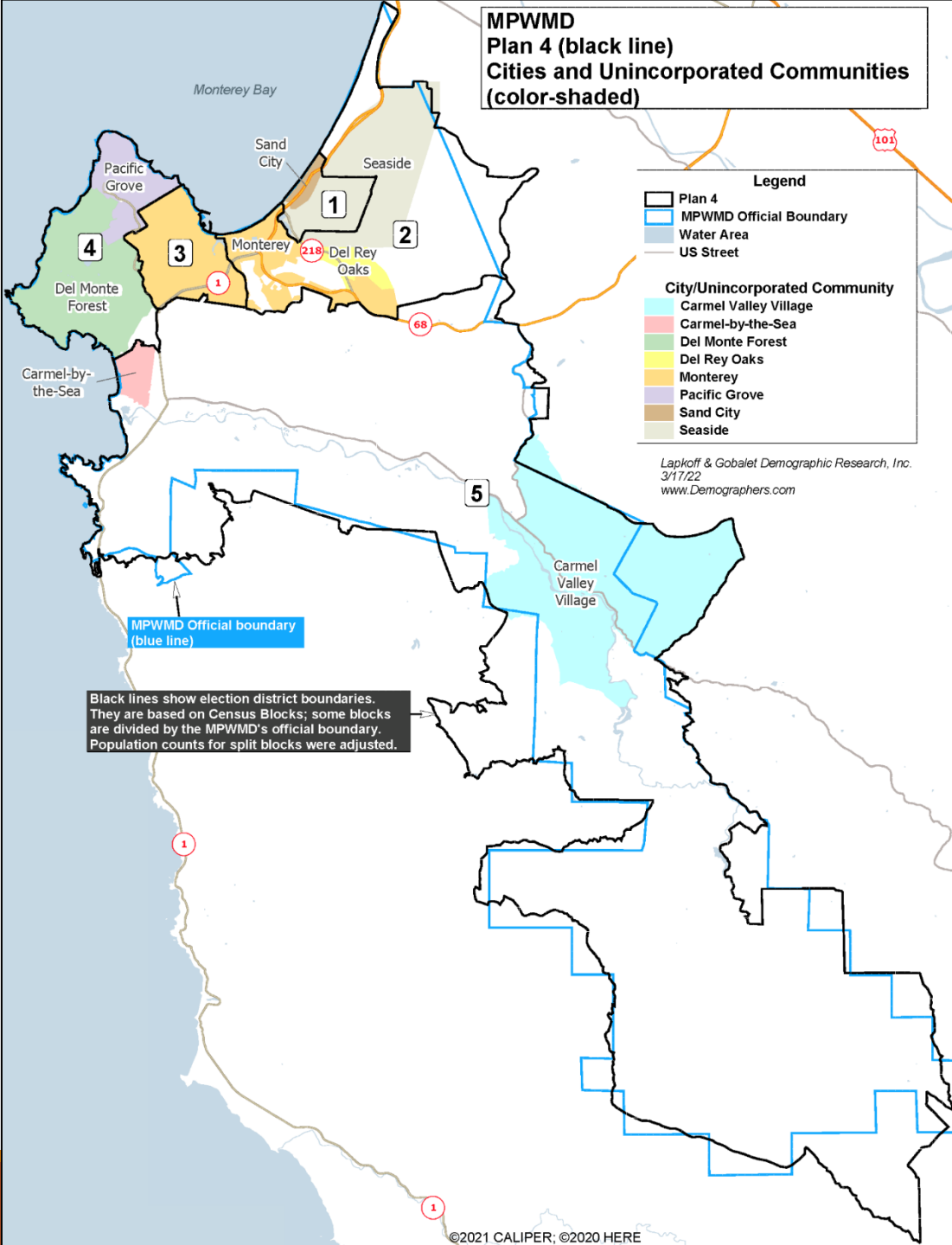
- ☐ RAC met three times. Each time they met, they discussed plans and provided feedback to the demographers.
- ☐ At the March 17 RAC meeting, Commissioners decided unanimously on a plan to recommend to the Board.
- ☐ The recommended plan was developed by Commissioners with the assistance of the demographers!

Criteria Considered by the RAC

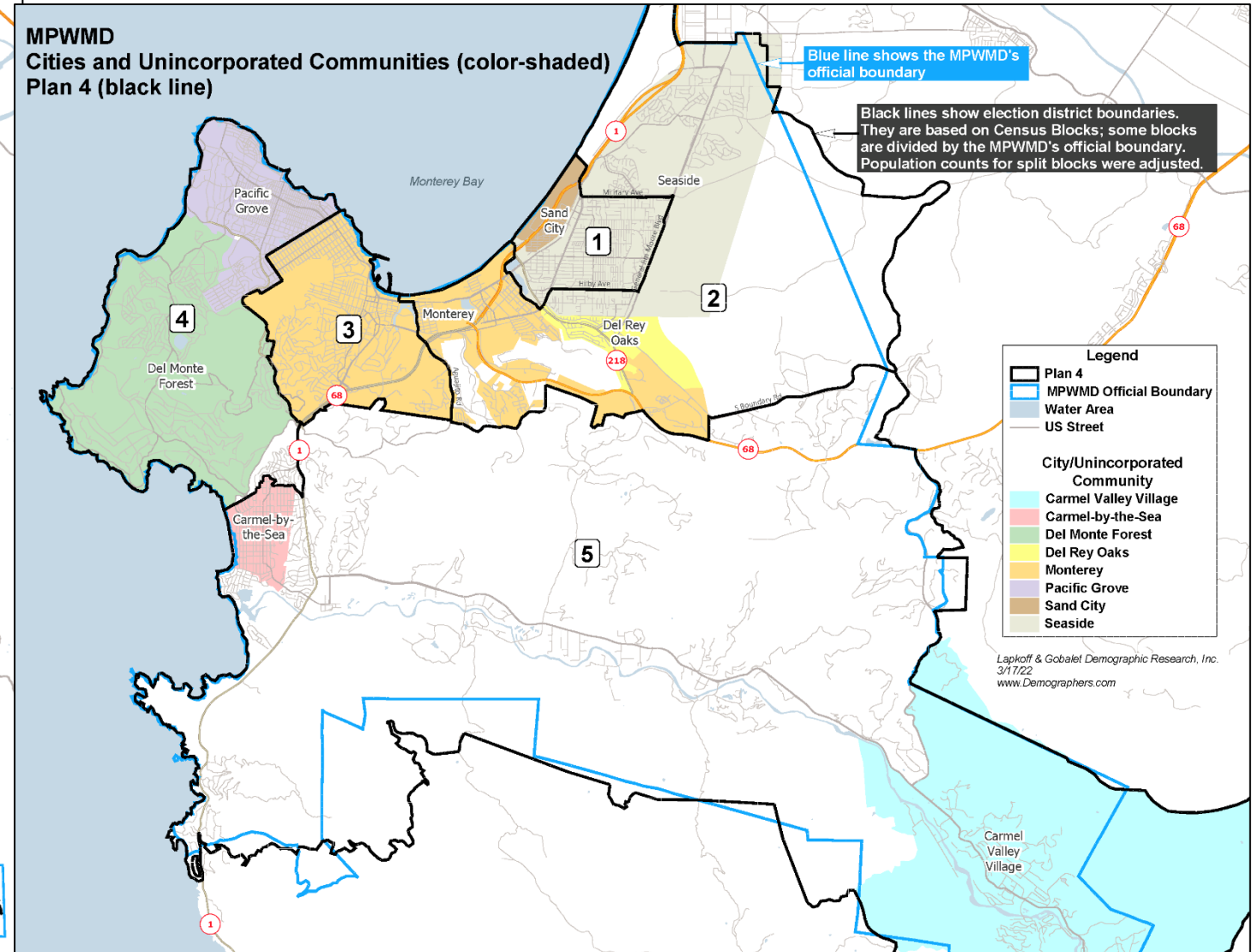
- ☐ Empowering the Latinx population to elect representatives of choice
- ☐ Distribution of Seaside's Latinx and African American populations
- ☐ Location of renter populations
- ☐ Household Economic status
- ☐ City limits
- ☐ Seaside's business district
- ☐ Monterey neighborhoods
- ☐ Current directors in separate election districts

Key Elements of RAC's Recommended Plan

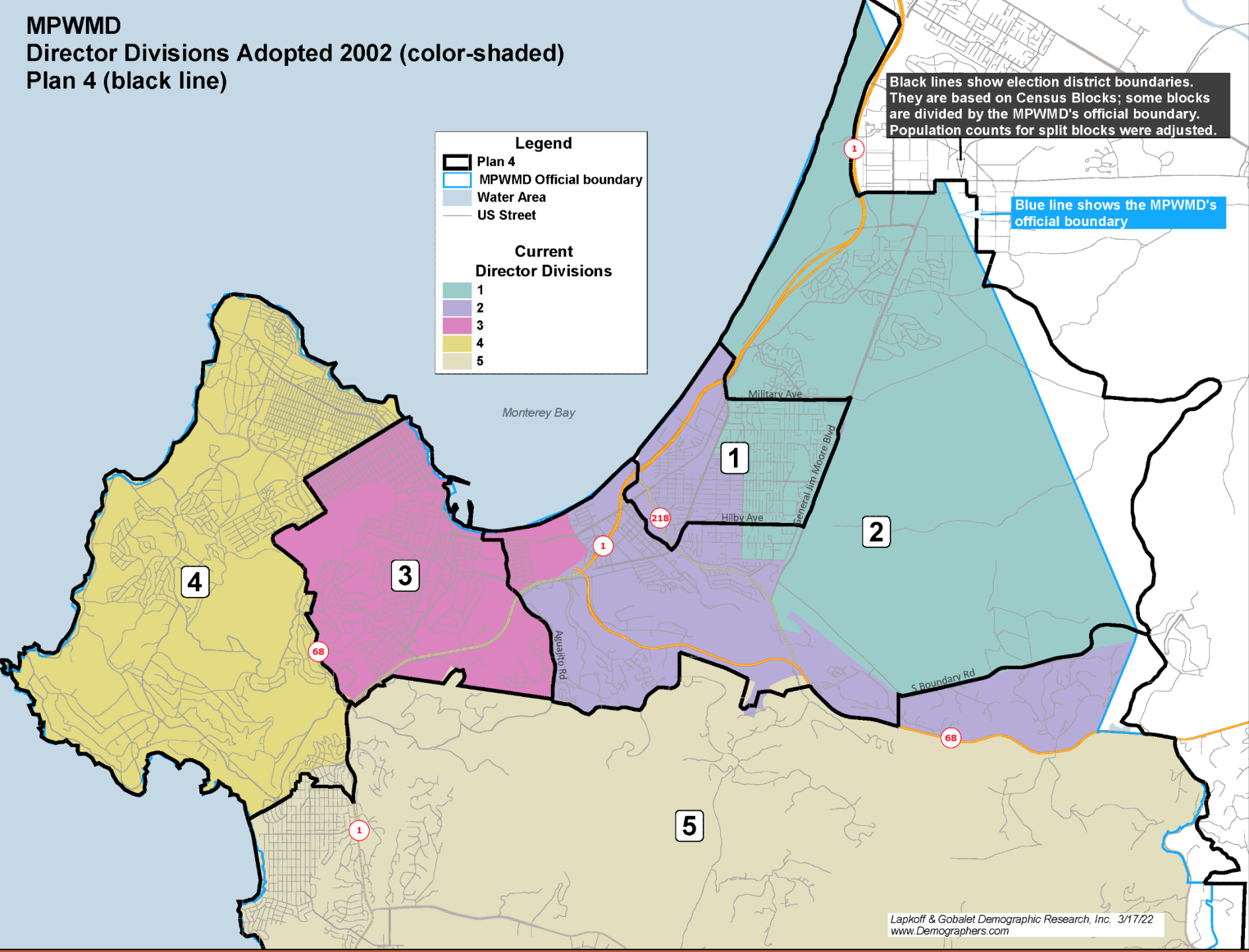
- ❑ A large Latinx population share in District 1 that includes Seaside's African American population concentration. This district is very different from the current one, which divides the Latinx population.
- ❑ Other changes are relatively minor and were needed for population balance. RAC carefully considered which populations to move:
 - ❑ District 3 needed to lose population so the area east of El Estero Park (Oak Grove neighborhood) was moved to District 2.
 - ❑ After gaining population from D3, District 2 needed to lose population. An unincorporated, rural, affluent area east of Monterey was moved to District 5 (Laguna Seca Estates and Pasadera).
 - ❑ District 4 needed more population and an unincorporated area north of Carmel-by-the-Sea was moved from District 5 to District 4 using city limit as the boundary.
- ❑ City limits were used extensively as election district boundaries.



RAC's Recommended Plan



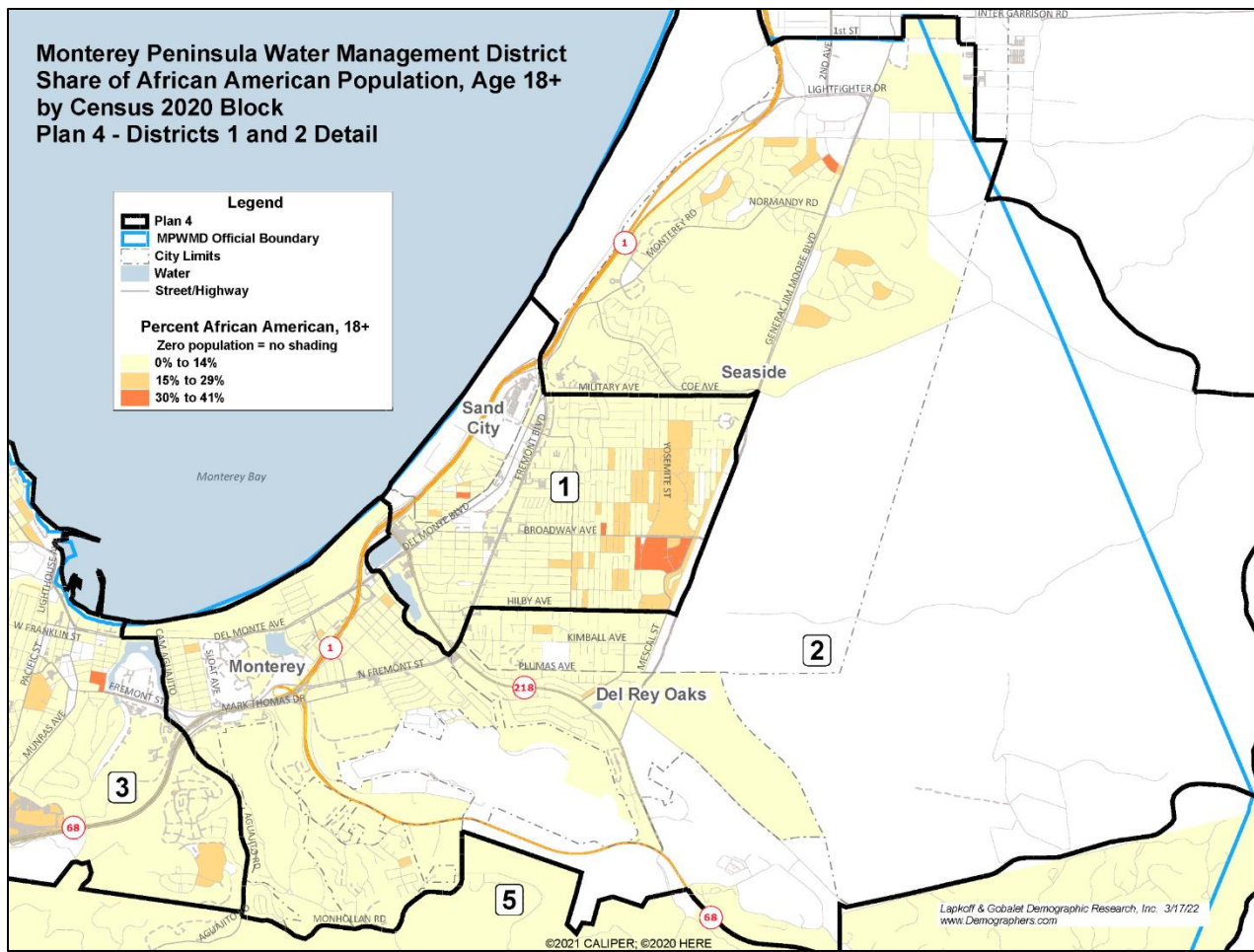
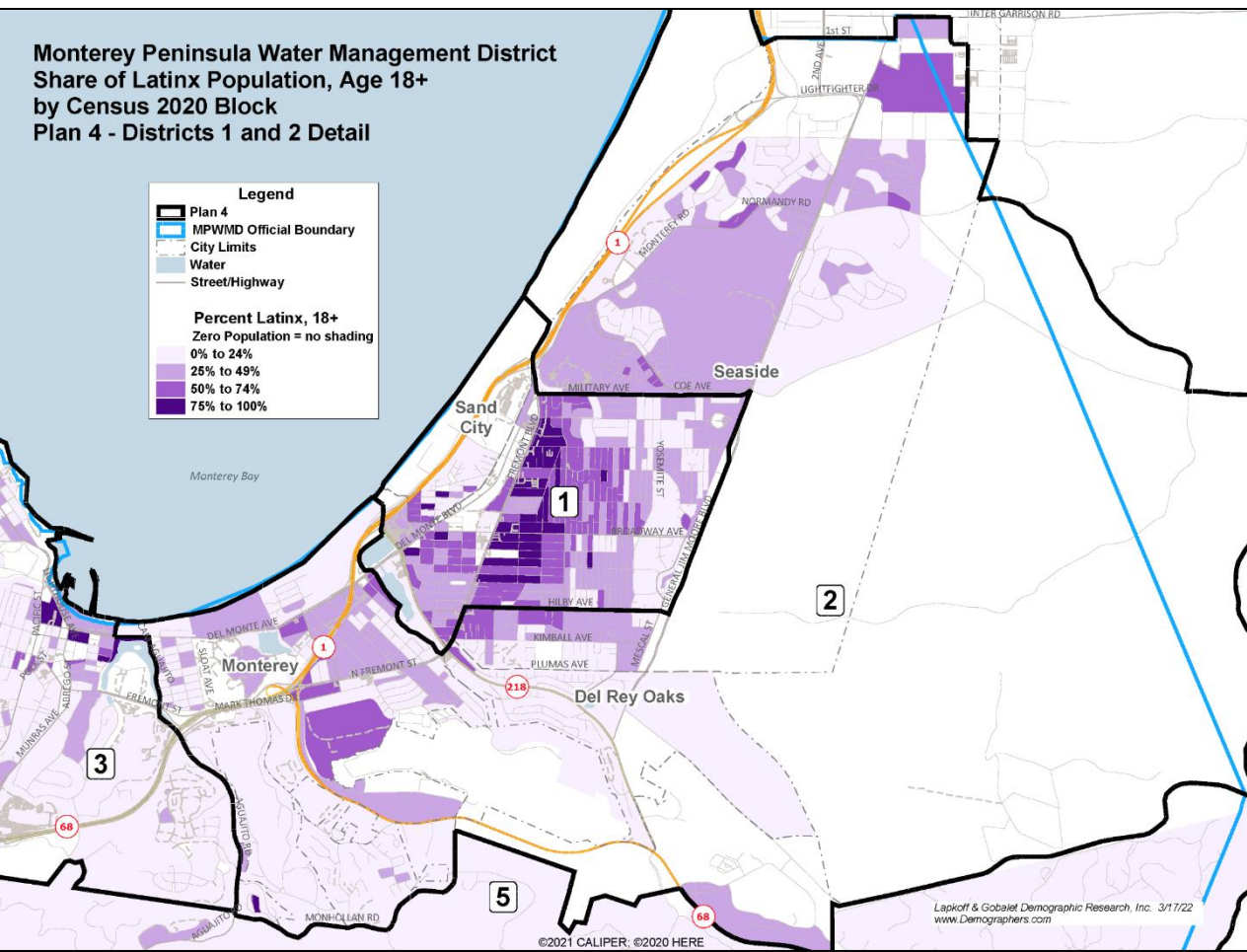
MPWMD
Director Divisions Adopted 2002 (color-shaded)
Plan 4 (black line)



RAC's Recommended Plan

With existing
districts color-
shaded

RAC's Recommended Plan with Latinx and Black population concentrations in Seaside



MPWMD Plan 4							
District	Total Population	Latino/ Hispanic	Non-Hispanic				Total
			White	Black	Asian	Other	
		Total Population Percentages					
1	21,398	56%	21%	7%	10%	5%	100%
2	22,125	28%	52%	4%	11%	6%	100%
3	21,161	15%	66%	4%	10%	4%	100%
4	20,488	12%	72%	2%	10%	4%	100%
5	20,739	9%	81%	1%	6%	4%	100%
Total	105,911	24%	58%	4%	9%	5%	100%
		Age 18+ (Voting Age) Population Percentages					
1	16,451	50%	25%	8%	11%	5%	100%
2	17,661	25%	55%	4%	11%	5%	100%
3	18,676	14%	68%	4%	10%	4%	100%
4	16,981	10%	76%	2%	8%	4%	100%
5	17,768	7%	83%	1%	6%	3%	100%
Total	87,537	21%	62%	4%	9%	4%	100%
		Citizens of Voting Age (CVAP) Percentages					
1	12,957	30%	34%	13%	14%	9%	100%
2	15,522	18%	62%	5%	9%	6%	100%
3	16,306	10%	72%	4%	8%	6%	100%
4	16,533	8%	79%	2%	6%	5%	100%
5	17,511	6%	86%	0%	4%	4%	100%
Total	78,829	13%	68%	4%	8%	6%	100%

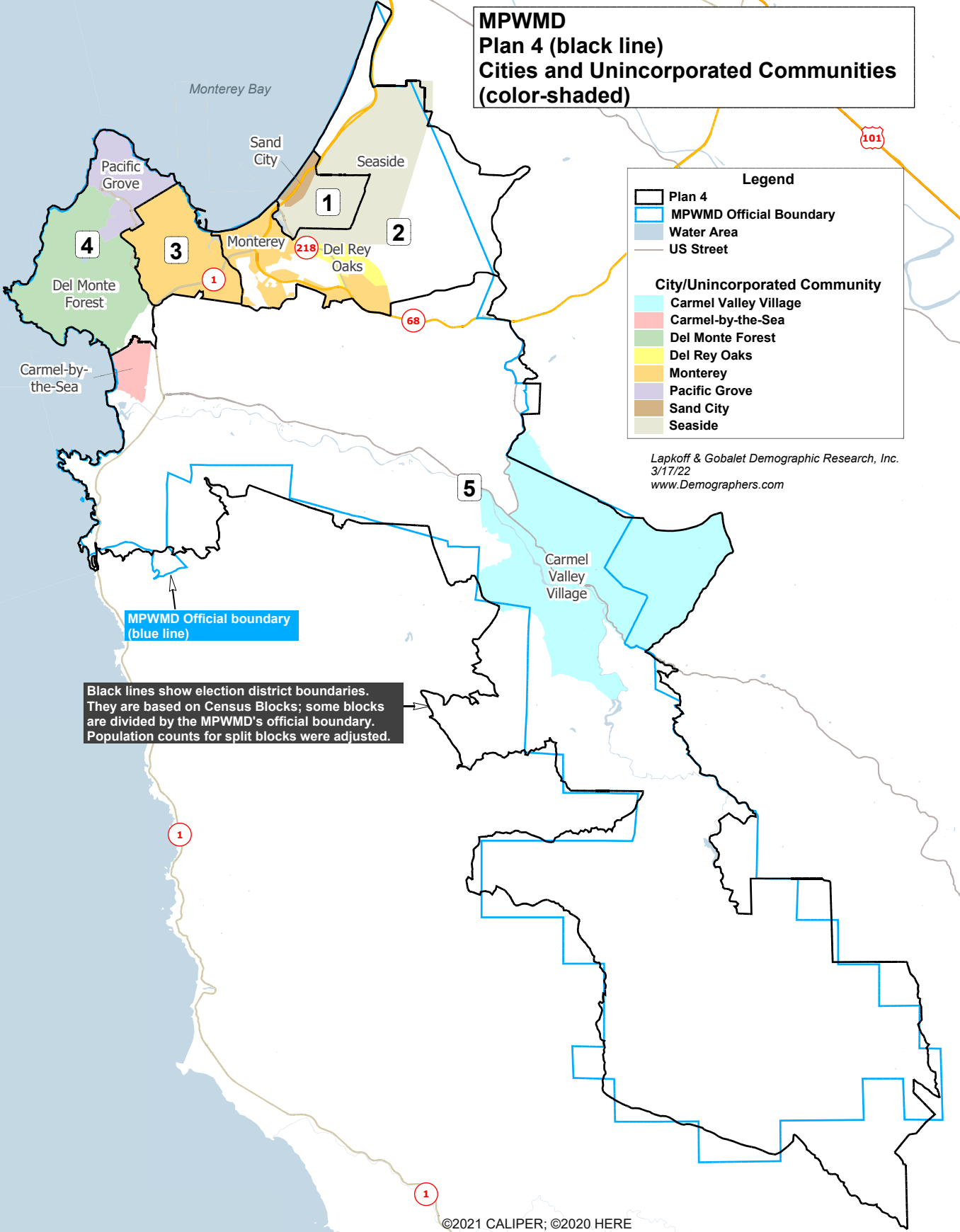
MPWMD Plan 4						
District	Total Population	Latino/ Hispanic	Non-Hispanic			
			White	Black	Asian	Other
			Registered Voters			
1	10,408	31%	n/a	n/a	8%	n/a
2	11,968	16%	n/a	n/a	6%	n/a
3	11,311	9%	n/a	n/a	6%	n/a
4	15,112	7%	n/a	n/a	4%	n/a
5	16,541	5%	n/a	n/a	4%	n/a
Total	65,340	12%	n/a	n/a	5%	n/a
			Actual Voters			
1	8,184	29%	n/a	n/a	8%	n/a
2	10,139	15%	n/a	n/a	6%	n/a
3	9,775	9%	n/a	n/a	5%	n/a
4	13,509	6%	n/a	n/a	4%	n/a
5	14,903	5%	n/a	n/a	4%	n/a
Total	56,510	11%	n/a	n/a	5%	n/a
District	Total Pop	Deviation	% Deviation			
1	21,398	216	1.0%			
2	22,125	943	4.5%			
3	21,161	-21	-0.1%			
4	20,488	-694	-3.3%			
5	20,739	-443	-2.1%			
Total	105,911					
Ideal	21,182	1,637	7.7%			

Summary

- ❑ **Commission members collaborated to create Plan 4, which was enthusiastically and unanimously approved**
- ❑ **Plan features a strong Latinx/African-American district in Seaside**
- ❑ **Plan uses city limits for many election district boundaries**
- ❑ **Plan takes into account economic communities of interest, the renter population, the race/ethnic distribution, and cities and neighborhoods as communities of interest**
- ❑ **Each current Director is in their own district**

Questions/Board Discussion

**MPWMD
Plan 4 (black line)
Cities and Unincorporated Communities
(color-shaded)**



Legend

Plan 4
MPWMD Official Boundary
Water Area
US Street

City/Unincorporated Community

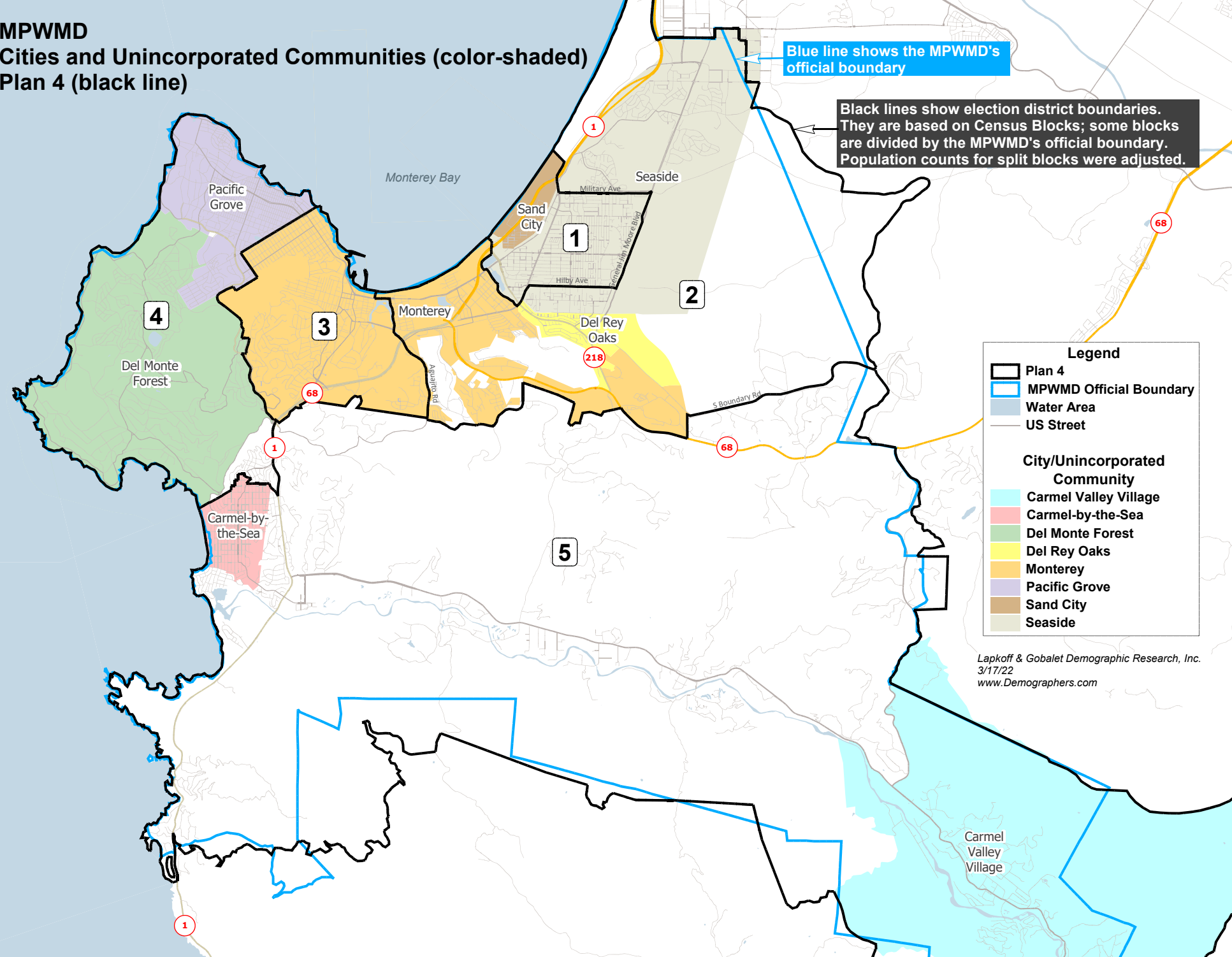
- Carmel Valley Village
- Carmel-by-the-Sea
- Del Monte Forest
- Del Rey Oaks
- Monterey
- Pacific Grove
- Sand City
- Seaside

Lapkoff & Gobalet Demographic Research, Inc.
3/17/22
www.Demographers.com

MPWMD Official boundary
(blue line)

Black lines show election district boundaries.
They are based on Census Blocks; some blocks
are divided by the MPWMD's official boundary.
Population counts for split blocks were adjusted.

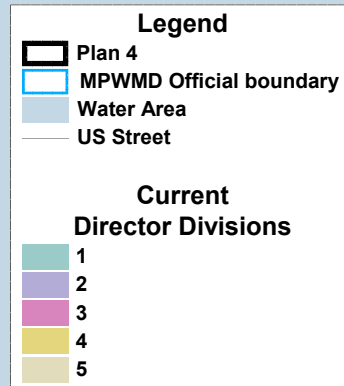
MPWMD
Cities and Unincorporated Communities (color-shaded)
Plan 4 (black line)



MPWMD

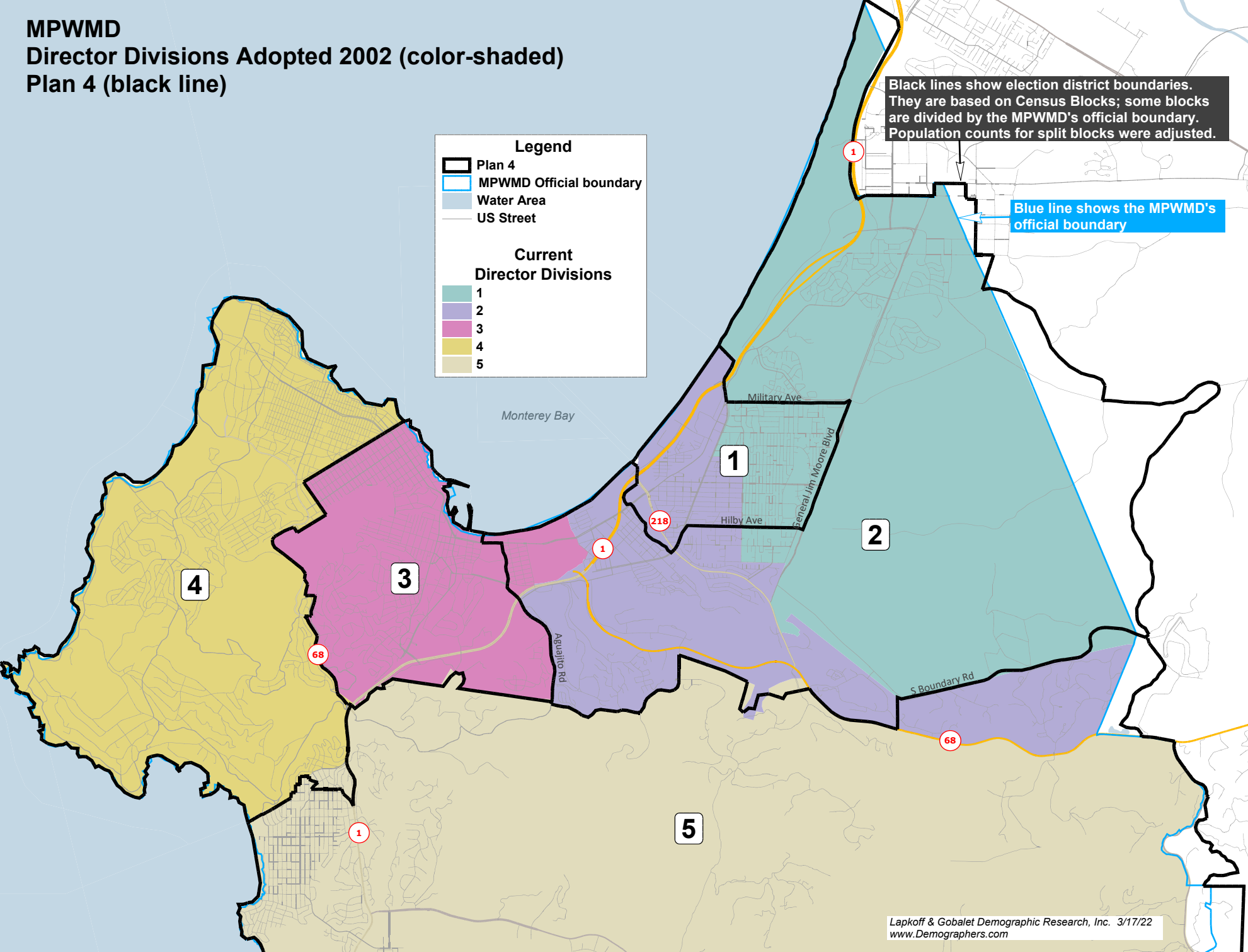
Director Divisions Adopted 2002 (color-shaded)

Plan 4 (black line)

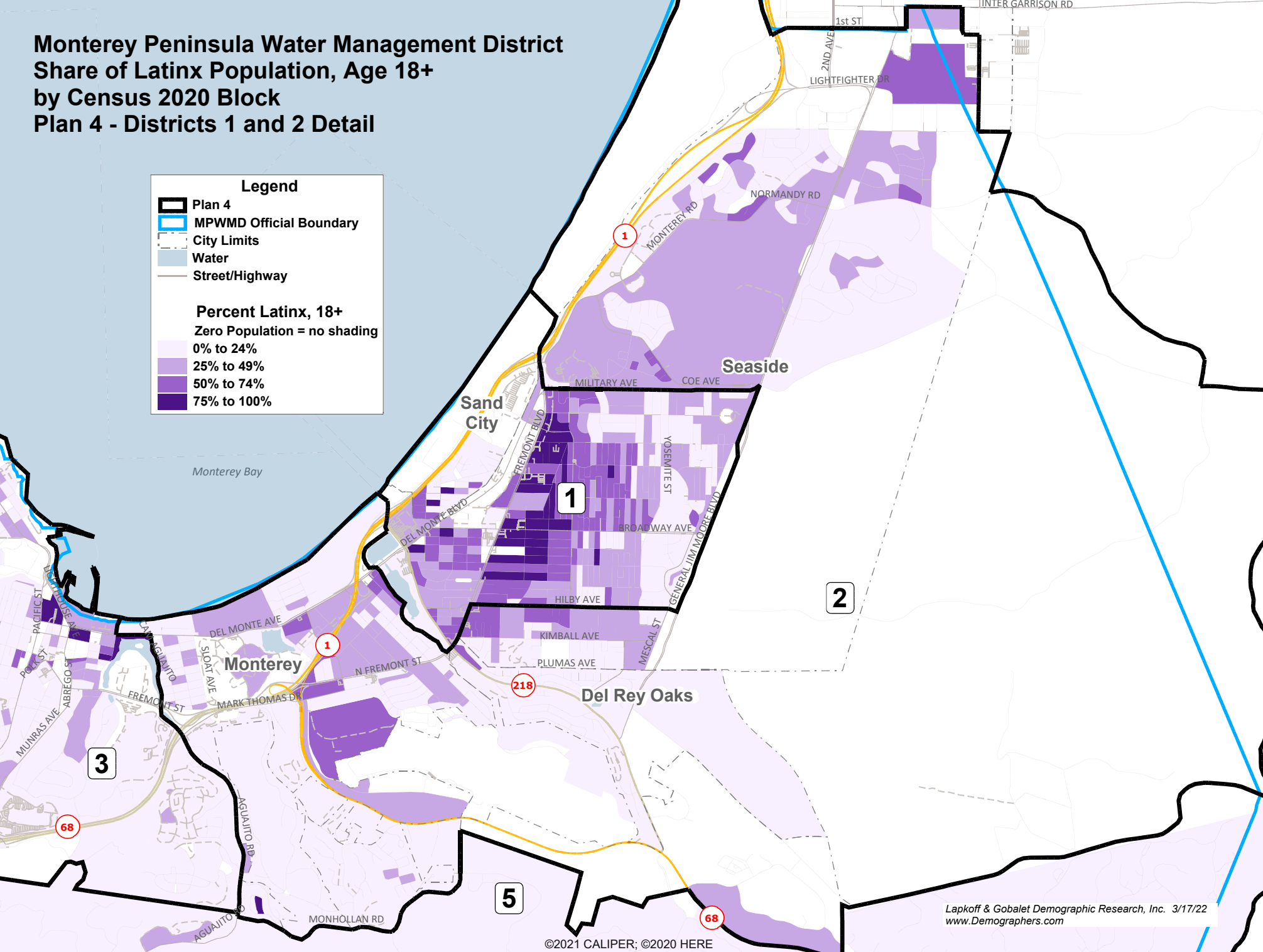


Black lines show election district boundaries. They are based on Census Blocks; some blocks are divided by the MPWMD's official boundary. Population counts for split blocks were adjusted.

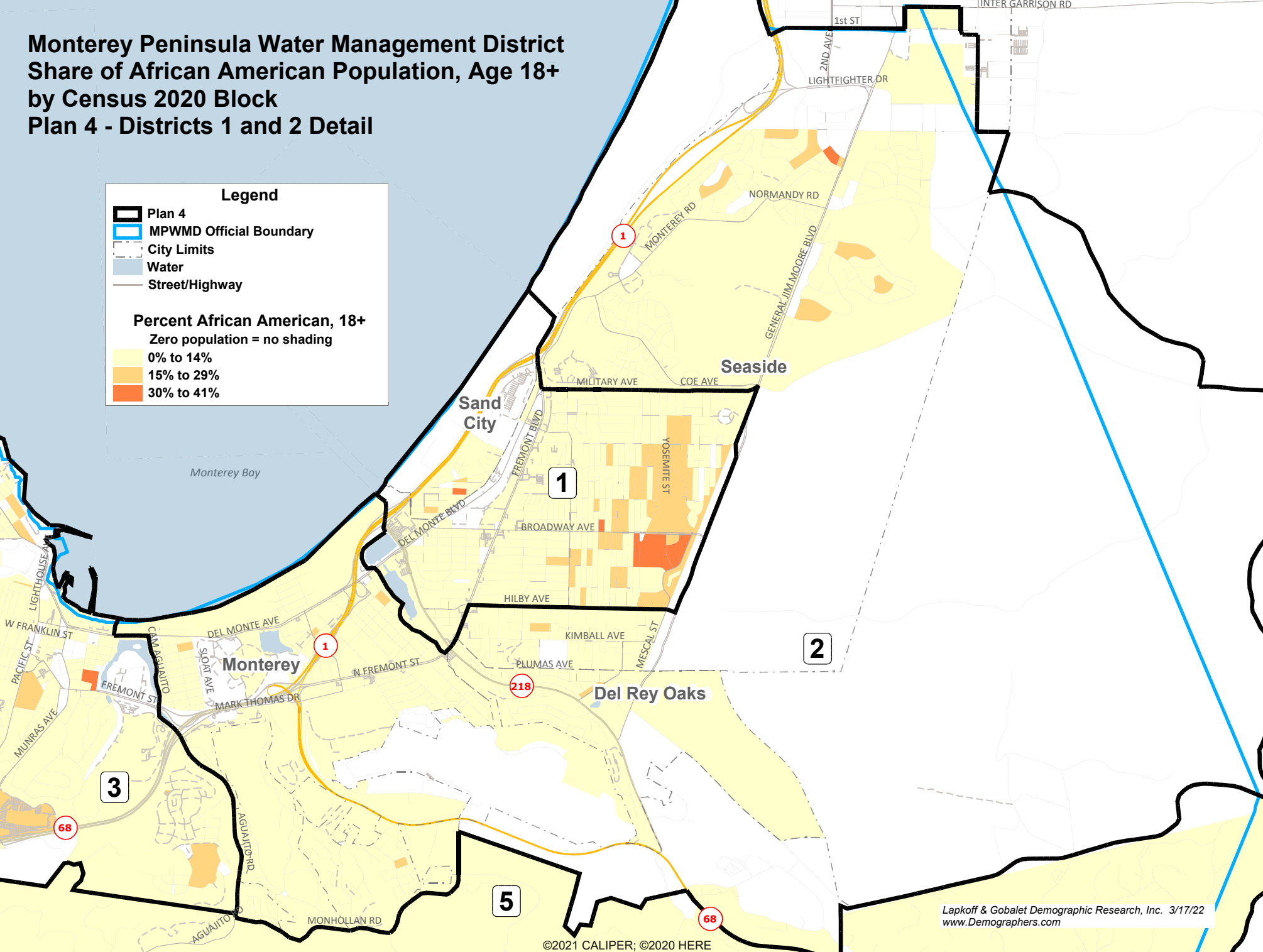
Blue line shows the MPWMD's official boundary



Monterey Peninsula Water Management District
Share of Latinx Population, Age 18+
by Census 2020 Block
Plan 4 - Districts 1 and 2 Detail



Monterey Peninsula Water Management District Share of African American Population, Age 18+ by Census 2020 Block Plan 4 - Districts 1 and 2 Detail



MPWMD Plan 4**MPWMD Plan 4**

District	Total Population	Latino/ Hispanic	Non-Hispanic				Total
			White	Black	Asian	Other	
		Total Population Percentages					
1	21,398	56%	21%	7%	10%	5%	100%
2	22,125	28%	52%	4%	11%	6%	100%
3	21,161	15%	66%	4%	10%	4%	100%
4	20,488	12%	72%	2%	10%	4%	100%
5	20,739	9%	81%	1%	6%	4%	100%
Total	105,911	24%	58%	4%	9%	5%	100%
		Age 18+ (Voting Age) Population Percentages					
1	16,451	50%	25%	8%	11%	5%	100%
2	17,661	25%	55%	4%	11%	5%	100%
3	18,676	14%	68%	4%	10%	4%	100%
4	16,981	10%	76%	2%	8%	4%	100%
5	17,768	7%	83%	1%	6%	3%	100%
Total	87,537	21%	62%	4%	9%	4%	100%
		Citizens of Voting Age (CVAP) Percentages					
1	12,957	30%	34%	13%	14%	9%	100%
2	15,522	18%	62%	5%	9%	6%	100%
3	16,306	10%	72%	4%	8%	6%	100%
4	16,533	8%	79%	2%	6%	5%	100%
5	17,511	6%	86%	0%	4%	4%	100%
Total	78,829	13%	68%	4%	8%	6%	100%

		Non-Hispanic				
District	Total Population	Latino/ Hispanic	White	Black	Asian	Other
		Registered Voters				
1	10,408	31%	n/a	n/a	8%	n/a
2	11,968	16%	n/a	n/a	6%	n/a
3	11,311	9%	n/a	n/a	6%	n/a
4	15,112	7%	n/a	n/a	4%	n/a
5	16,541	5%	n/a	n/a	4%	n/a
Total	65,340	12%	n/a	n/a	5%	n/a
		Actual Voters				
1	8,184	29%	n/a	n/a	8%	n/a
2	10,139	15%	n/a	n/a	6%	n/a
3	9,775	9%	n/a	n/a	5%	n/a
4	13,509	6%	n/a	n/a	4%	n/a
5	14,903	5%	n/a	n/a	4%	n/a
Total	56,510	11%	n/a	n/a	5%	n/a
District	Total Pop	Deviation	% Deviation			
1	21,398	216	1.0%			
2	22,125	943	4.5%			
3	21,161	-21	-0.1%			
4	20,488	-694	-3.3%			
5	20,739	-443	-2.1%			
Total	105,911					
Ideal	21,182	1,637	7.7%			