



Santa Margarita Construction

Status

2 March, 2020



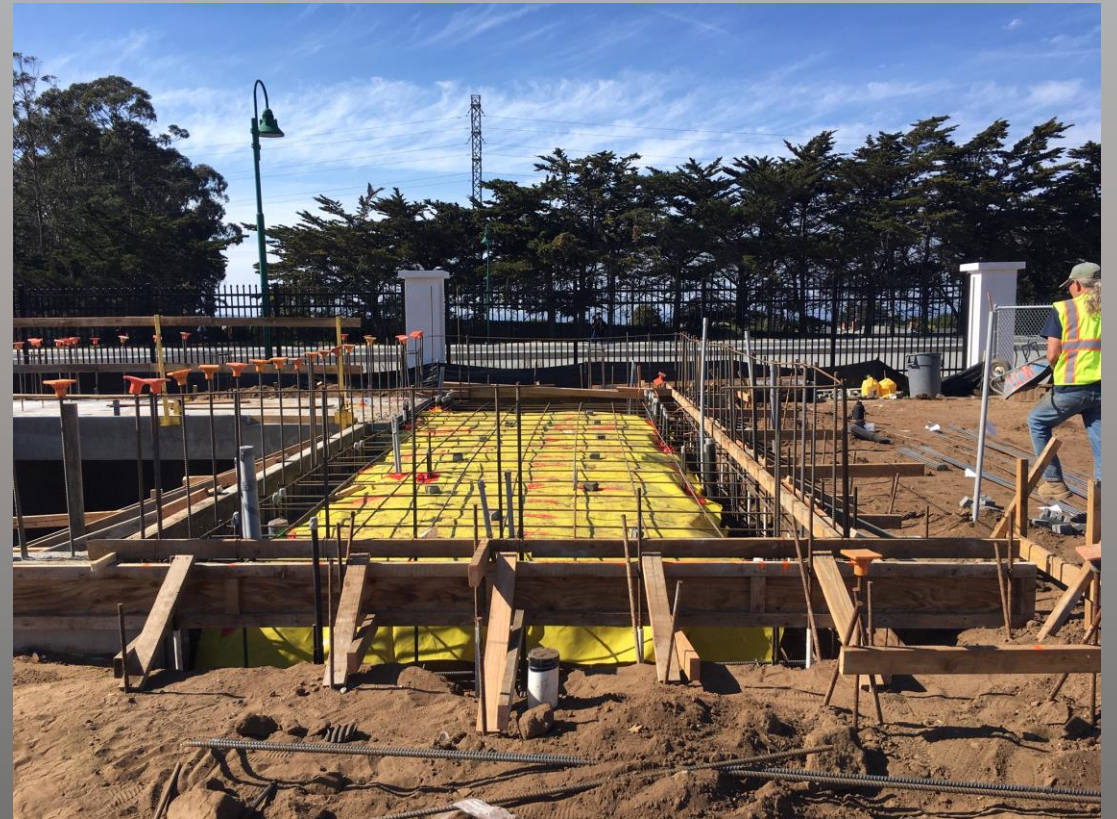
Poured Mezzanine Floor



Setting Forms for Columns and Retaining Wall



Underslab Conduit and Electrical Room Forms



Blowoff Energy Dissipater



Electrical Room and Footings Concrete



Schedule and Budget

- Critical Path schedule reviewed, and revisions requested
 - Critical path is MCC; submittal was reviewed and accepted 3 weeks ahead of schedule.
- Critical submittals 2-3 weeks ahead of schedule
 - 63 submittals, 51 closed
- Change Orders \$15,757