



General Manager's Report Item 5:

Status Report on Cal-Am Compliance
with SWRCB Orders and Seaside Basin
Decision as of March 1, 2021

Meeting Date: March 15, 2021

Staff contact: David J. Stoldt

Actual versus Target Production

Oct – Feb Water Year 2021

(All Values in Acre-Feet)

Year-to-Date Values	MPWRS				MPWRS Total
	Carmel River Basin ^{2, 6}	Seaside Groundwater Basin		Ajudication Compliance	
		Coastal	Laguna Seca		
Target	2,140	773	0	773	2,913
Actual ⁴	1,822	808	88	896	2,718
Difference	318	-35	-88	-123	195
WY 2020 Actual	3,106	890	123	1,013	4,126

1. This table is current through the date of this report.
2. For CDO compliance, ASR, Mal Paso, and Table 13 diversions are included in River production per State Board.
3. Sand City Desal, Table 13, and ASR recovery are also tracked as water resources projects.
4. To date, 66 AF and 17 AF have been produced from the River for ASR and Table 13 respectively.
5. All values are rounded to the nearest Acre-Foot.
6. For CDO Tracking Purposes, ASR production for injection is capped at 600 AFY.
7. Table 13 diversions are reported under water rights but counted as production from the River for CDO tracking.

Actual versus Target Production

Oct – Feb Water Year 2021

(All Values in Acre-Feet)

Water Projects and Rights					
Year-to-Date Values	ASR Recovery	Table 13 ⁷	Pure Water Monterey	Sand City ³	Water Projects and Rights Total
	Target	0	114	1,000	
Actual ⁴	0	17	902	49	968
Difference	0	97	98	76	271
WY 2020 Actual	0	88	0	37	125

1. This table is current through the date of this report.
2. For CDO compliance, ASR, Mal Paso, and Table 13 diversions are included in River production per State Board.
3. Sand City Desal, Table 13, and ASR recovery are also tracked as water resources projects.
4. To date, 66 AF and 17 AF have been produced from the River for ASR and Table 13 respectively.
5. All values are rounded to the nearest Acre-Foot.
6. For CDO Tracking Purposes, ASR production for injection is capped at 600 AFY.
7. Table 13 diversions are reported under water rights but counted as production from the River for CDO tracking.

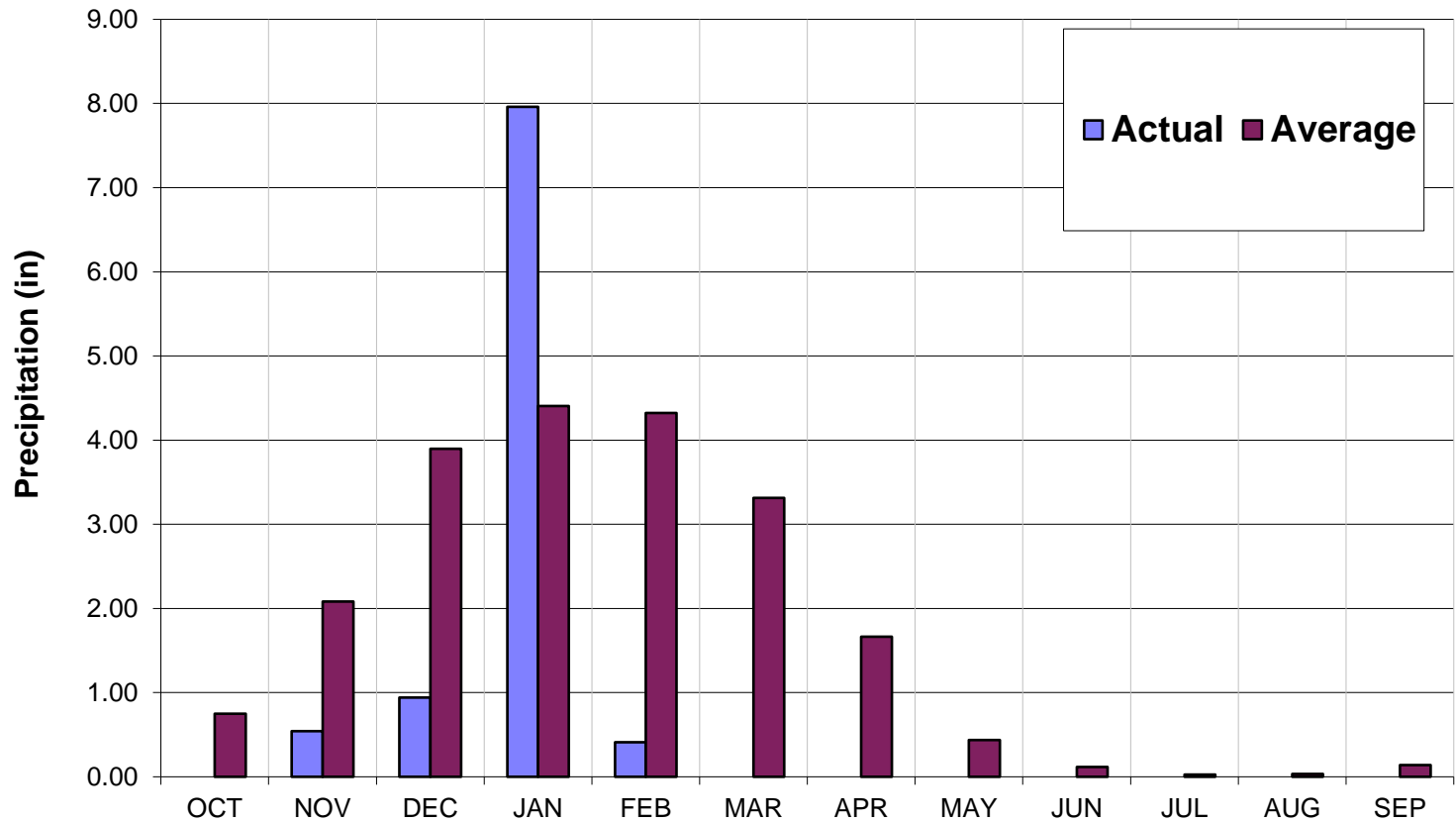
Production for Customer Service for Cal-Am: Water Year 2021 (All Values in Acre-Feet)

Monthly Production from all Sources for Customer Service: WY 2021

	Carmel River Basin	Seaside Basin	ASR Recovery	Table 13	Sand City	Mal Paso	Pure Water Monterey	Total
Oct-20	293	266	0	0	10	5	300	874
Nov-20	233	219	0	0	0	5	300	757
Dec-20	314	276	0	0	7	6	100	703
Jan-21	343	130	0	13	12	5	150	652
Feb-21	531	6	0	4	20	5	52	617
Mar-21								
Apr-21								
May-21								
Jun-21								
Jul-21								
Aug-21								
Sep-21								
Total	1,714	896	0	17	49	26	902	3,603
WY 2020	2,586	1,013	0	88	37	15	0	3,739

1. This table is produced as a proxy for customer demand.
2. Numbers are provisional and are subject to correction.

Monthly Recorded Rainfall at San Clemente Rain Gage: Water Year 2021



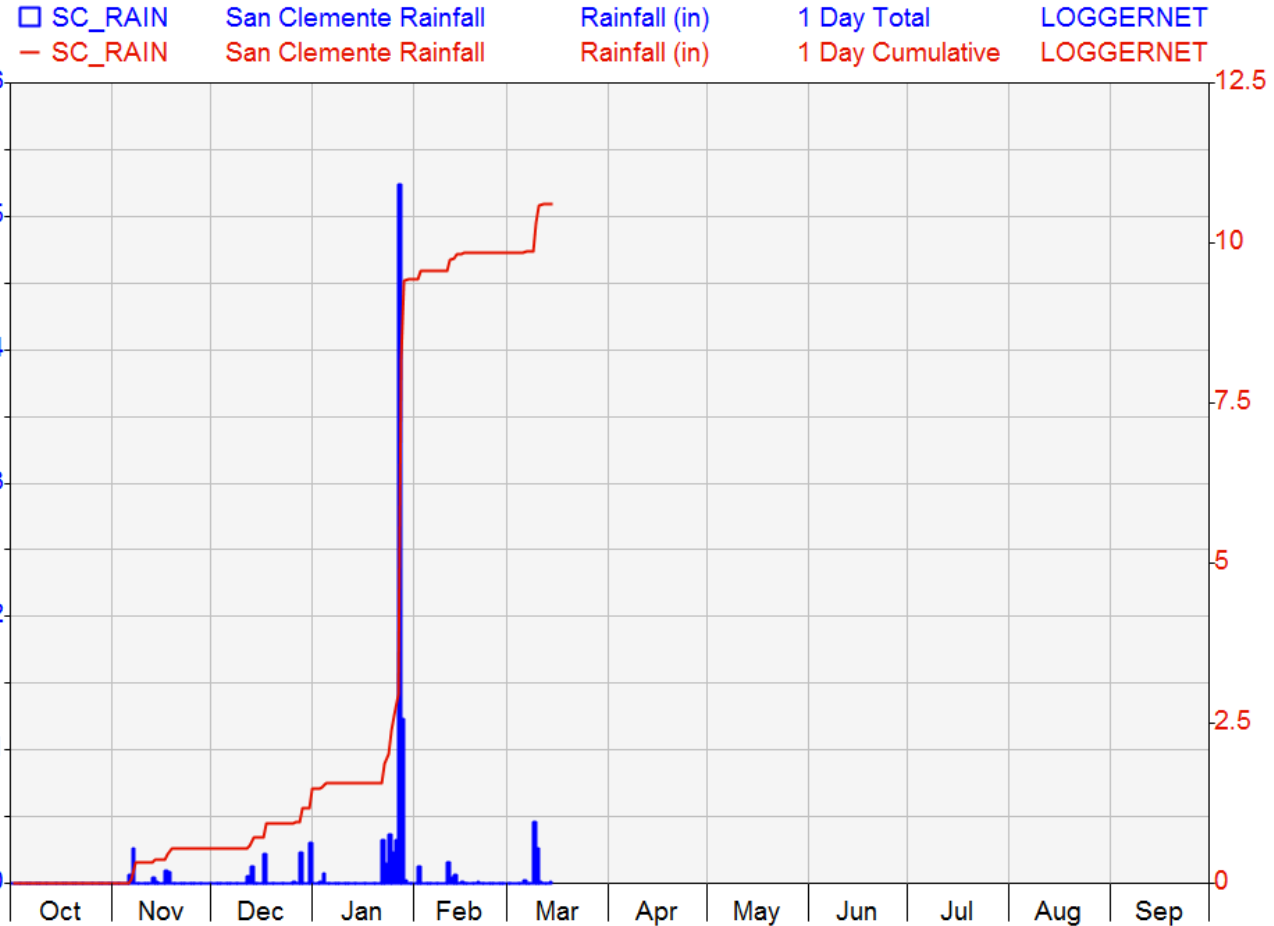
Daily Rainfall Recorded at San Clemente Rain Gage: Water Year 2021

Monterey Peninsula Water Management District

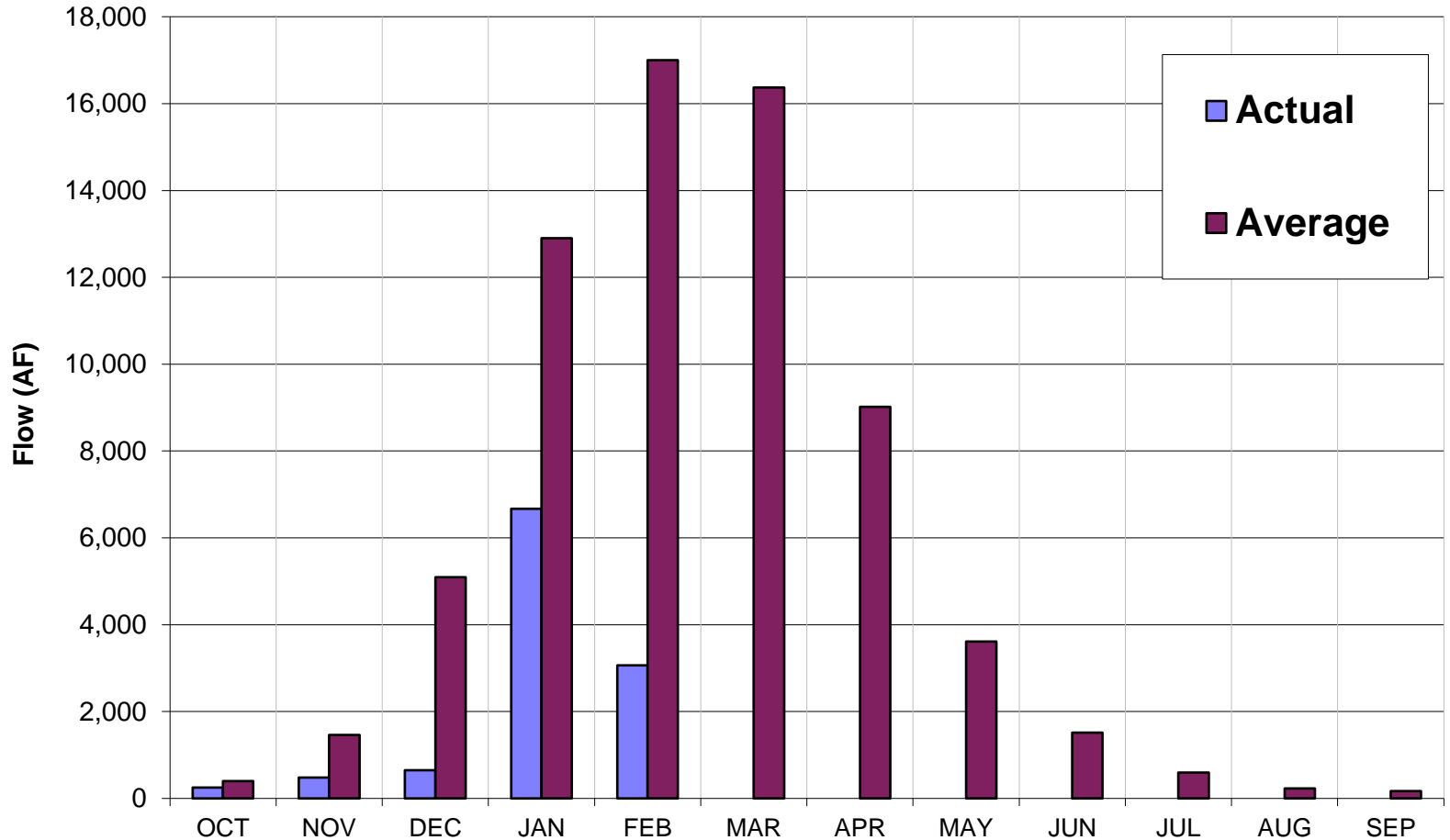
HYPLOT V134 Output 03/15/2021

Period 1 Year 10/01/2020 to 10/01/2021

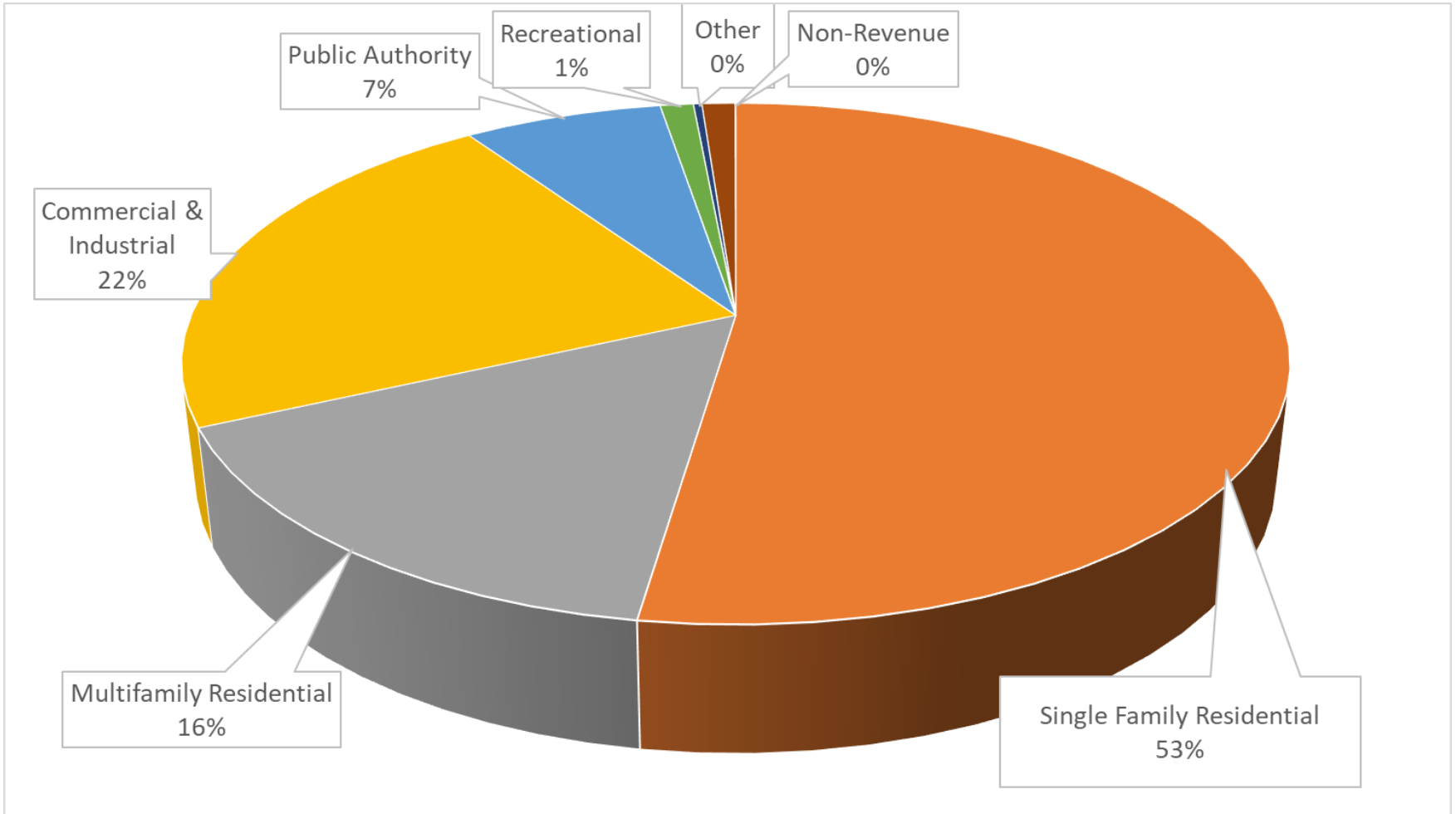
2020-21



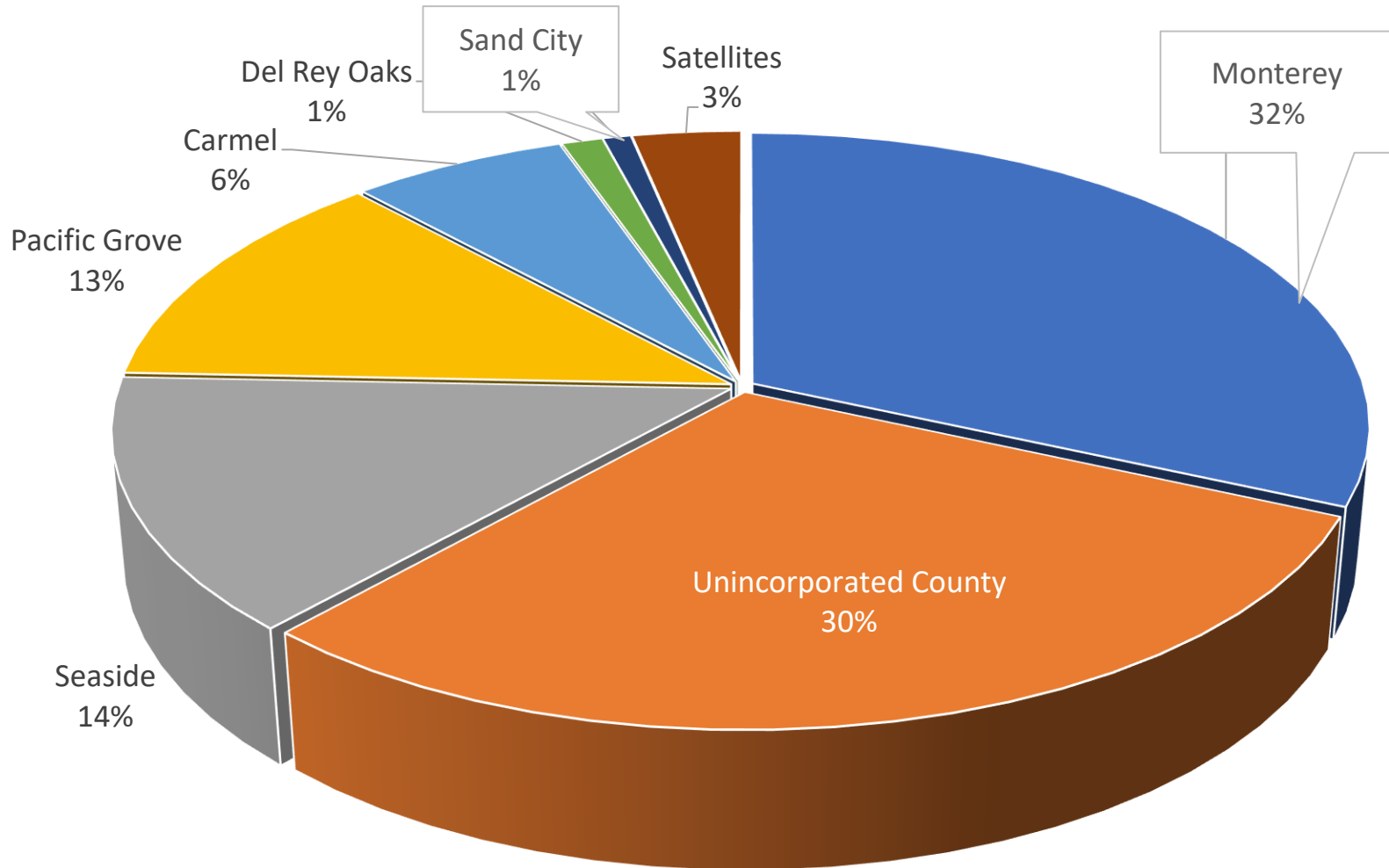
Estimated Unimpaired Carmel River Flow at Sleepy Hollow Weir: Water Year 2021



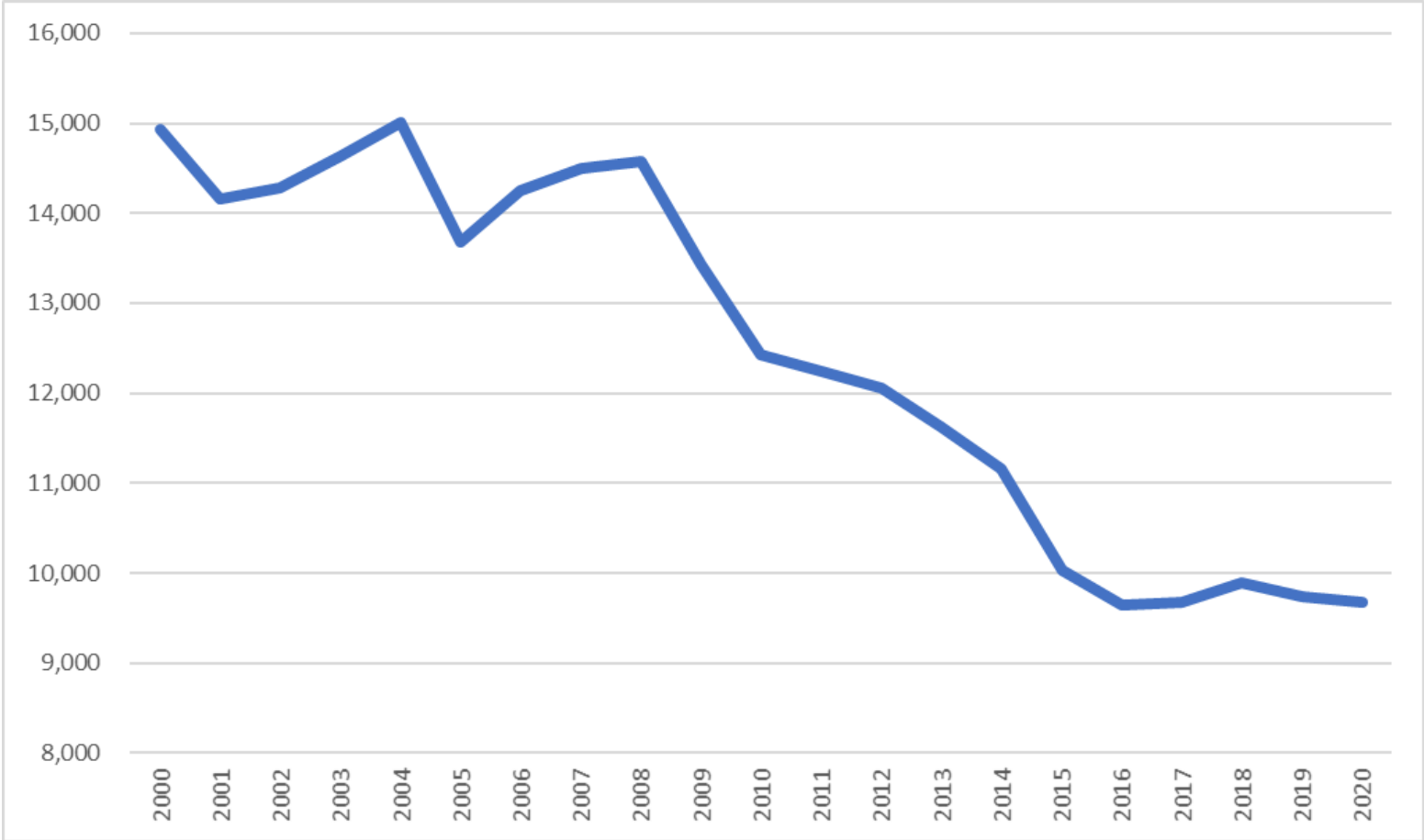
Water Demand by Use – WY2019-20



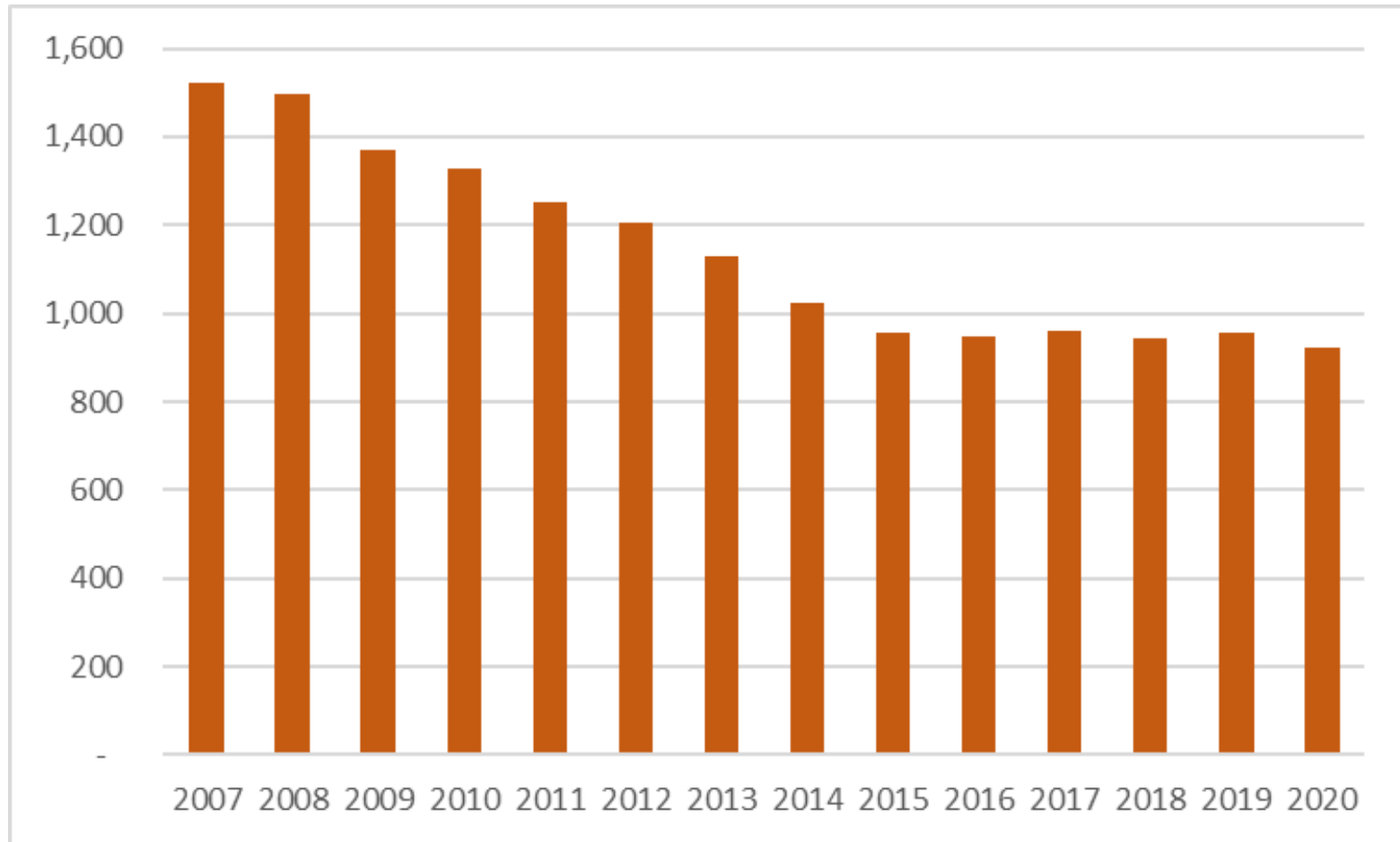
Water Demand by Jurisdiction – WY2019-20



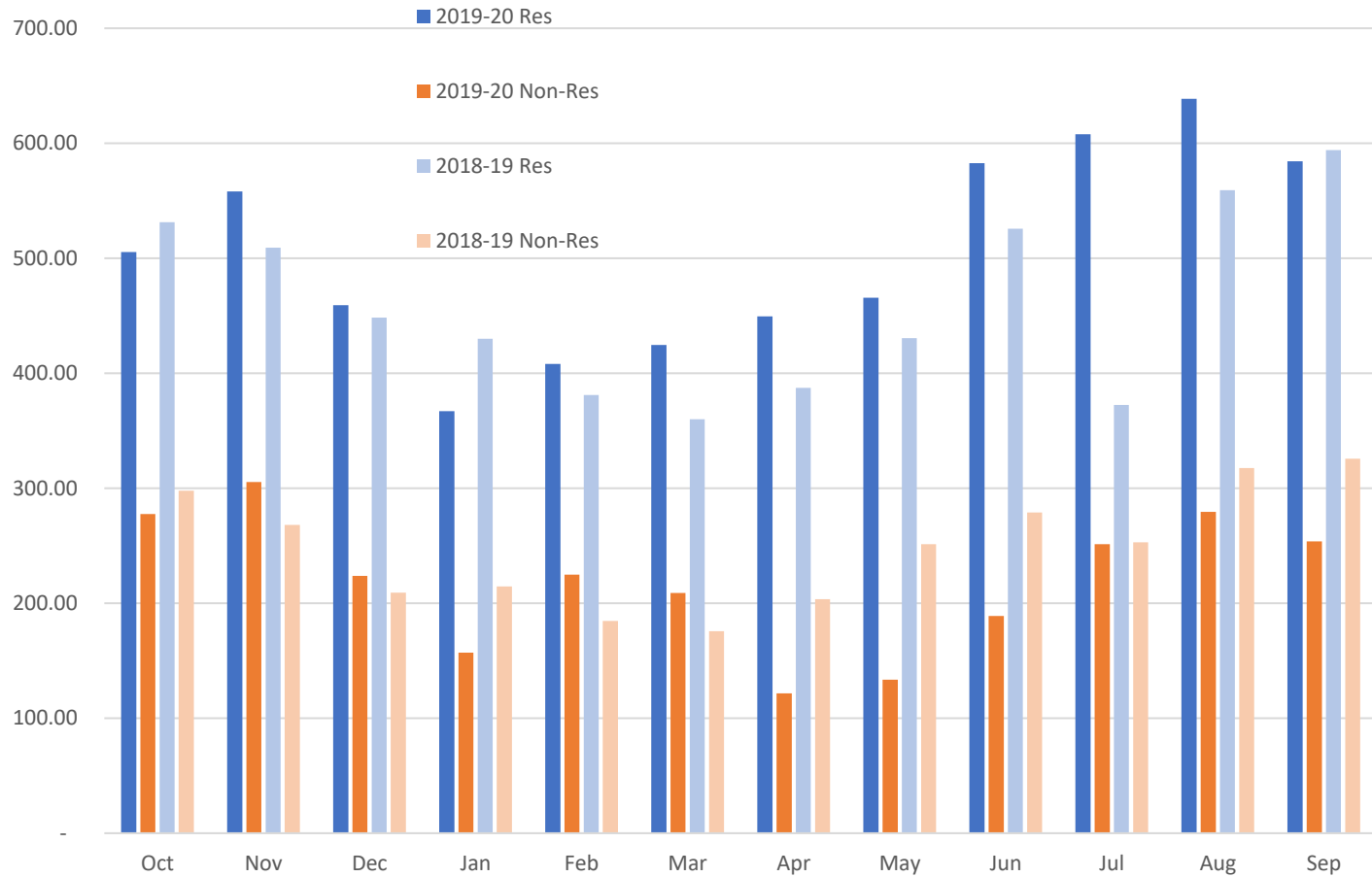
Total Water Demand – Last 2 Decades



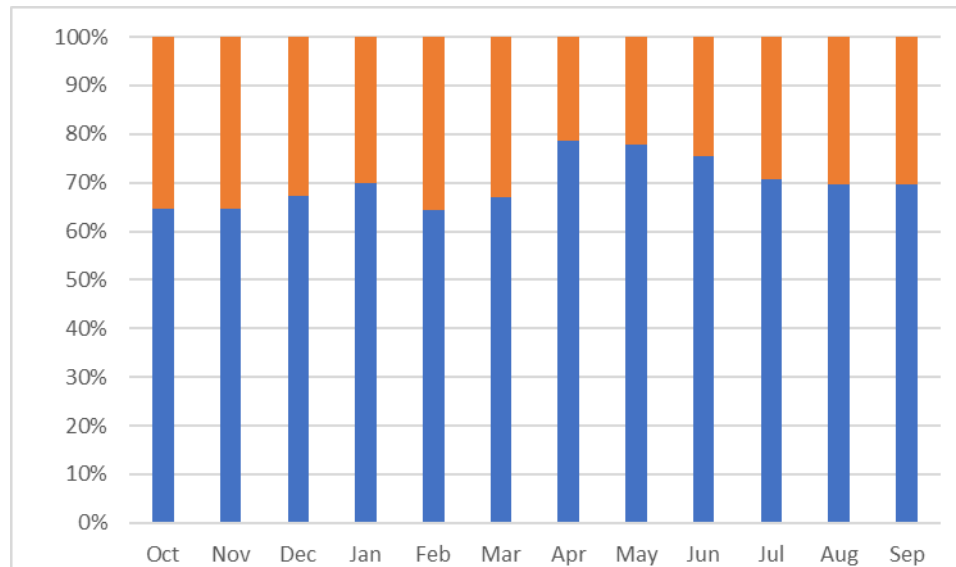
Maximum Month Demand Since 2007 – AF



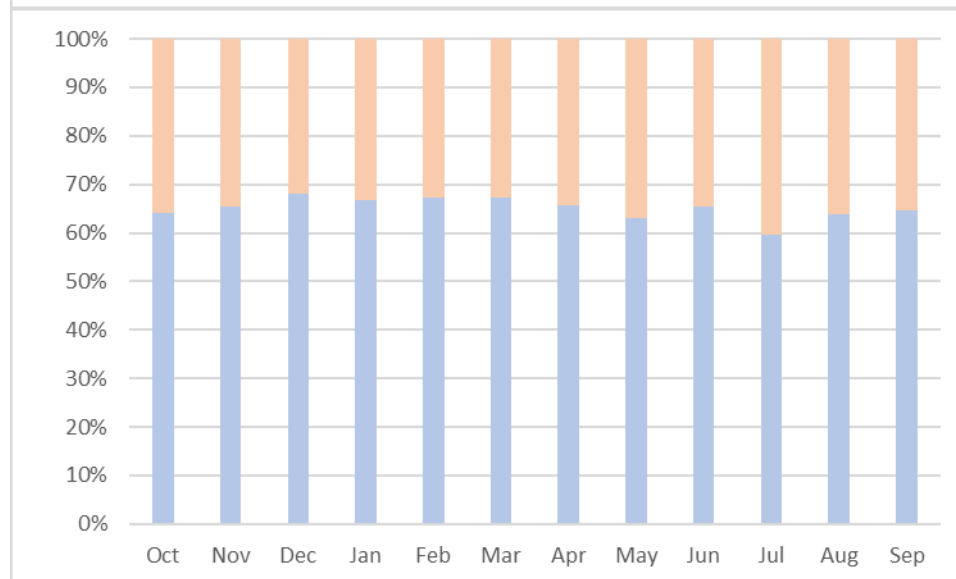
Residential and Non-Residential Use – Last 2 Years



Residential and Non-Residential Use as %



WY 2020



WY 2019