



General Manager's Report Item 9:

Status Report on Cal-Am Compliance
with SWRCB Orders and Seaside Basin
Decision as of April 1, 2023

Meeting Date: April 17, 2023

Staff contact: David J. Stoldt

Actual versus Target Production

Oct – Mar Water Year 2023

(All Values in Acre-Feet)

Year-to-Date Values	MPWRS				MPWRS Total
	Carmel River Basin ^{2, 6}	Seaside Groundwater Basin		Ajudication Compliance	
		Coastal	Laguna Seca		
Target	2,545	730	0	730	3,275
Actual ⁴	865	470	53	523	1,388
Difference	1,680	260	-53	207	1,887
WY 2022 Actual	2,133	237	58	294	2,408

1. This table is current through the date of this report.
2. For CDO compliance, ASR, Mal Paso, and Table 13 diversions are included in River production per State Board.
3. Sand City Desal, Table 13, and ASR recovery are also tracked as water resources projects.
4. To date, 905 AF and 313 AF have been produced from the River for ASR and Table 13 respectively.
5. All values are rounded to the nearest Acre-Foot.
6. For CDO Tracking Purposes, ASR production for injection is capped at 600 AFY.
7. Table 13 diversions are reported under water rights but counted as production from the River for CDO tracking.

Actual versus Target Production

Oct – Mar Water Year 2023

(All Values in Acre-Feet)

Water Projects and Rights					
Year-to-Date Values					Water Projects and Rights Total
	ASR Recovery	PWM Recovery	Table 13 ⁷	Sand City ³	
Target	0	1,980	0	150	2,130
Actual ⁴	0	2,373	313	85	2,771
Difference	0	-393	-313	65	-641
WY 2022 Actual	0	1,859	68	60	1,987

1. This table is current through the date of this report.
2. For CDO compliance, ASR, Mal Paso, and Table 13 diversions are included in River production per State Board.
3. Sand City Desal, Table 13, and ASR recovery are also tracked as water resources projects.
4. To date, 905 AF and 313 AF have been produced from the River for ASR and Table 13 respectively.
5. All values are rounded to the nearest Acre-Foot.
6. For CDO Tracking Purposes, ASR production for injection is capped at 600 AFY.
7. Table 13 diversions are reported under water rights but counted as production from the River for CDO tracking.

Production for Customer Service for Cal-Am: Water Year 2023

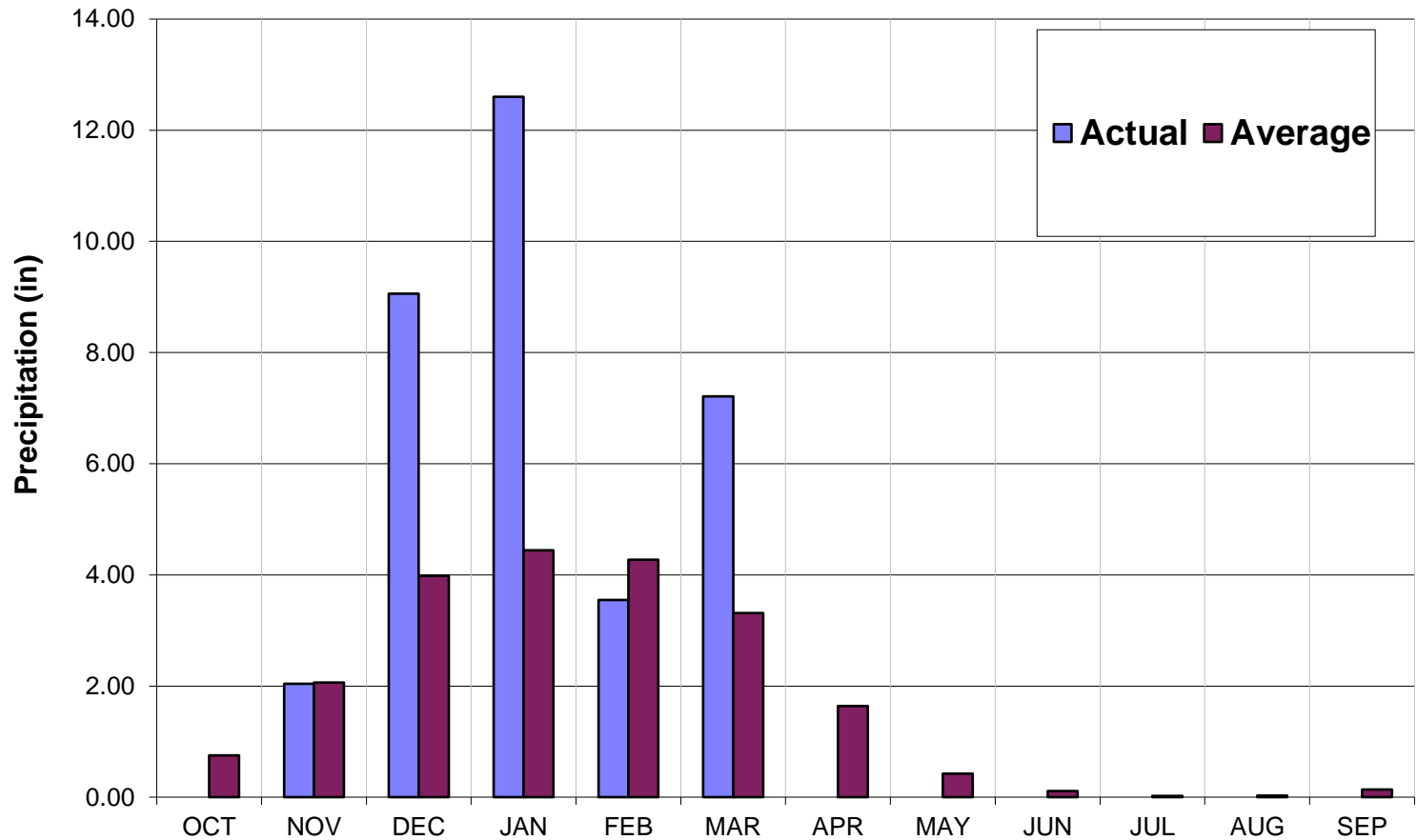
(All Values in Acre-Feet)

Monthly Production from all Sources for Customer Service: WY 2023

	Carmel River Basin	Seaside Basin	ASR Recovery	PWM Recovery	Table 13	Sand City	Mal Paso	Total
Oct-22	269	105	0	405	0	20	7	805
Nov-22	223	87	0	334	0	27	7	677
Dec-22	189	38	0	359	20	9	9	624
Jan-23	111	86	0	340	102	14	8	661
Feb-23	4	37	0	436	91	0	7	575
Mar-23	69	170	0	499	101	15	8	862
Apr-23								
May-23								
Jun-23								
Jul-23								
Aug-23								
Sep-23								
Total	865	523	0	2,373	313	85	46	4,205
WY 2022	1,957	294	0	1,859	68	60	27	4,265

1. This table is produced as a proxy for customer demand.
2. Numbers are provisional and are subject to correction.

Monthly Recorded Rainfall at San Clemente Rain Gage: Water Year 2023



Daily Rainfall Recorded at San Clemente Rain Gage: Water Year 2023

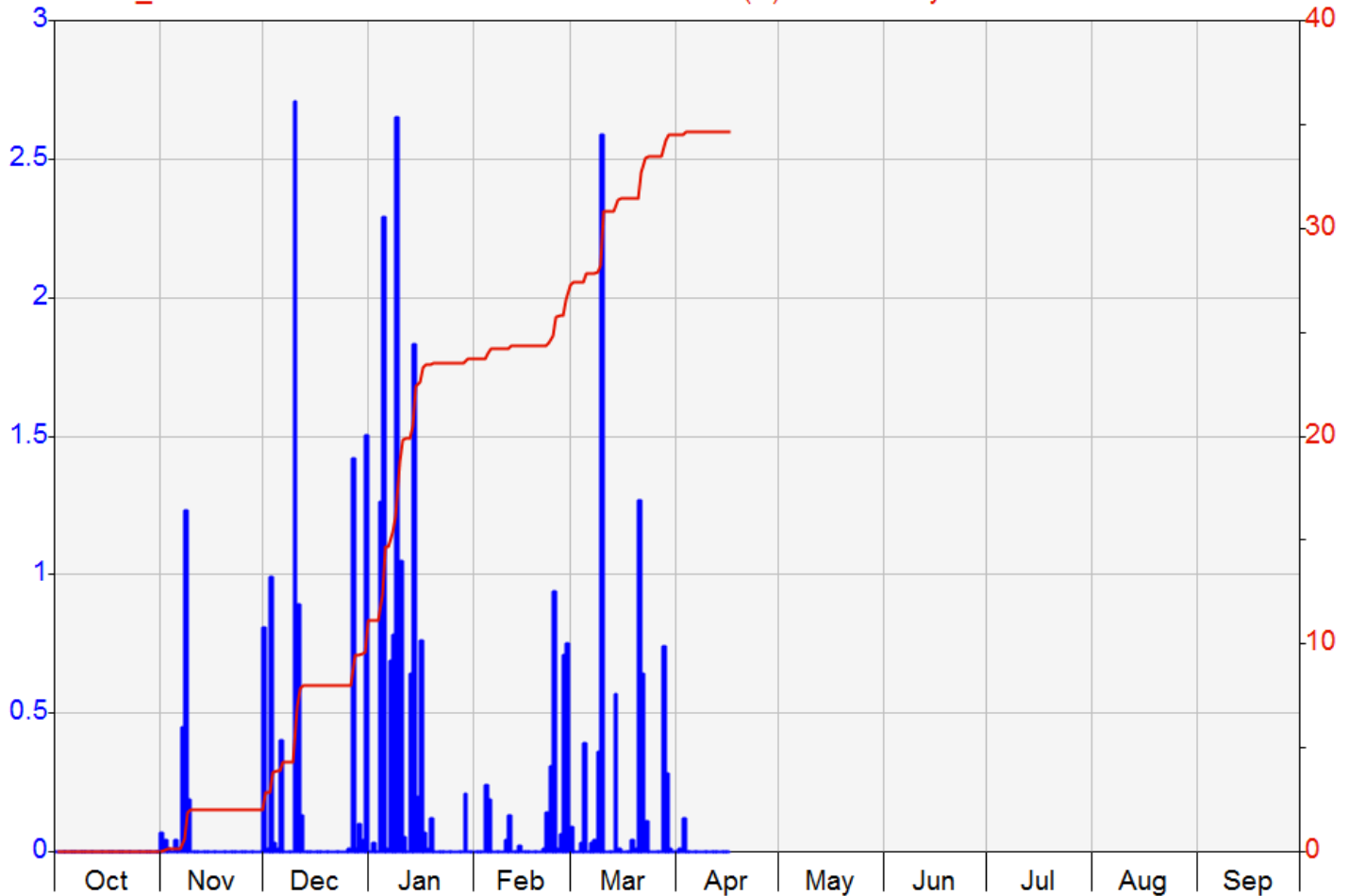
Monterey Peninsula Water Management District

HYPLOT V134 Output 04/17/2023

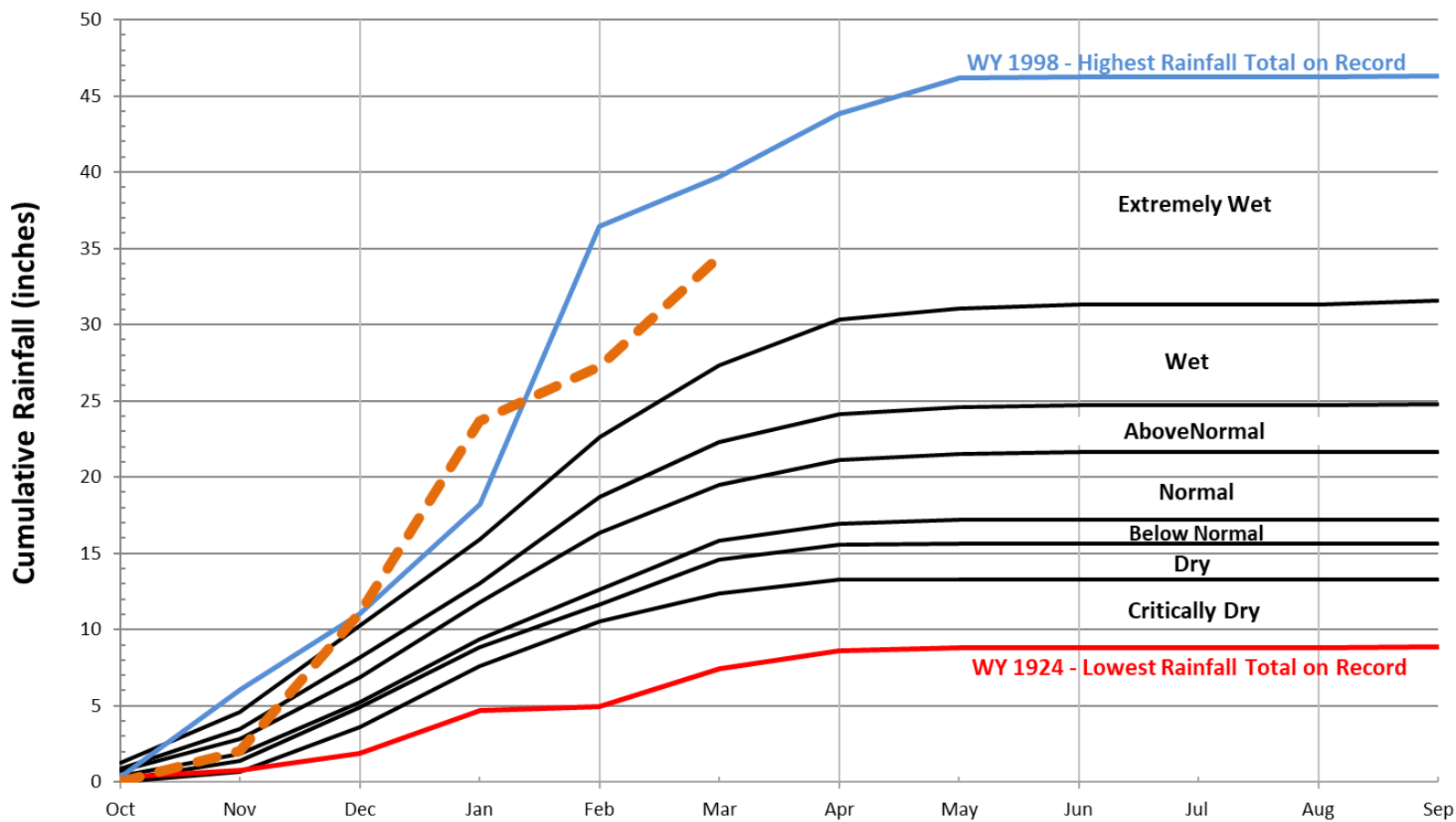
Period 1 Year 10/01/2022 to 10/01/2023

2022-23

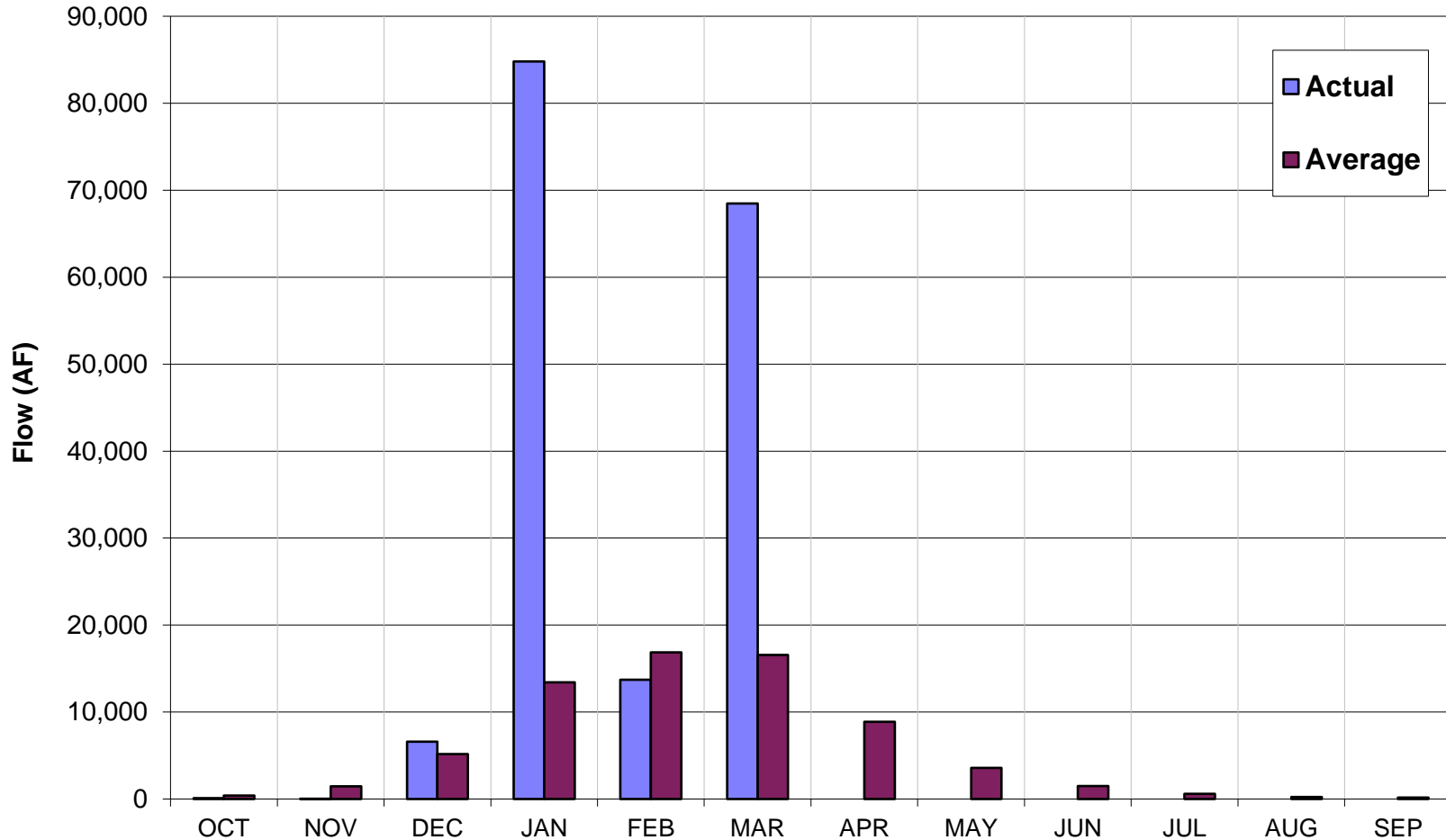
▣ SC_RAIN San Clemente Rainfall Rainfall (in) 1 Day Total LOGGNET
— SC_RAIN San Clemente Rainfall Rainfall (in) 1 Day Cumulative LOGGNET



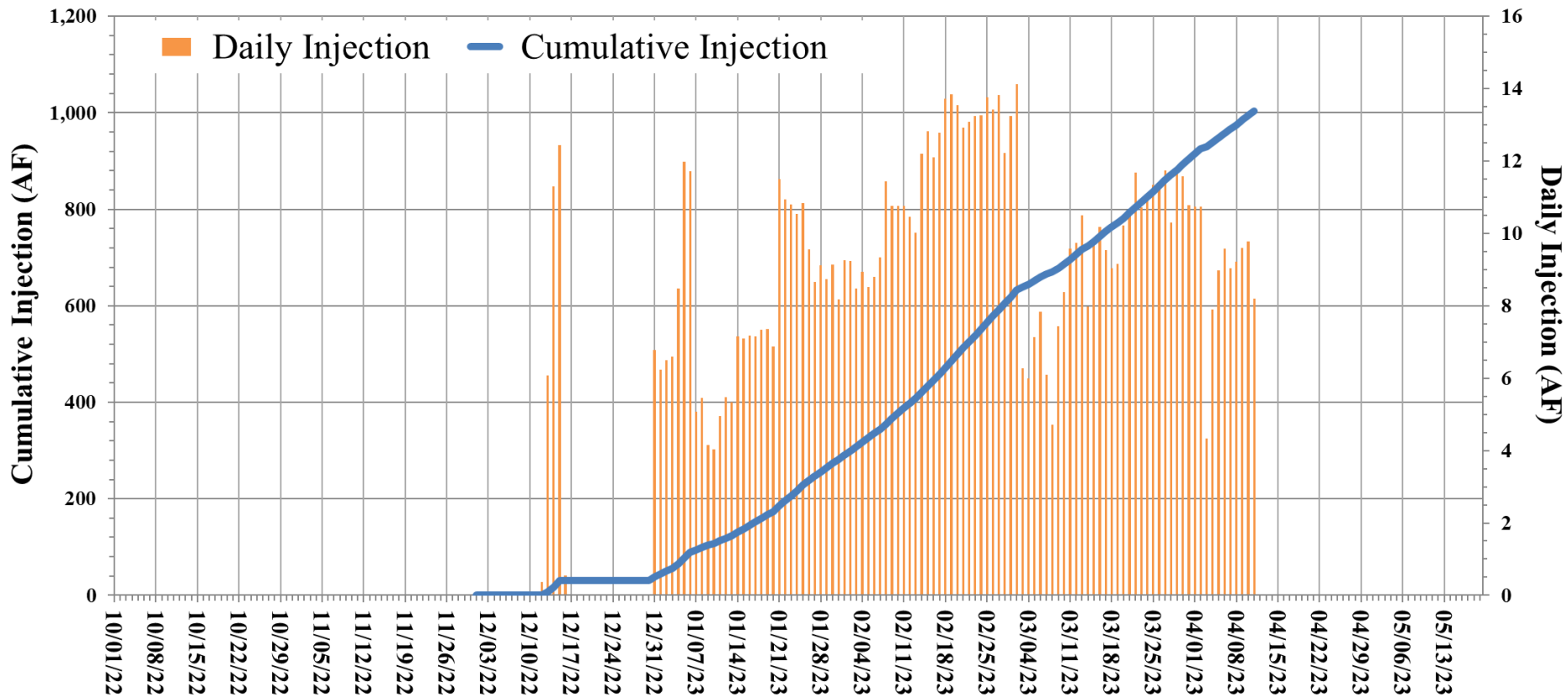
Rainfall Year Types



Estimated Unimpaired Carmel River Flow at Sleepy Hollow Weir: Water Year 2023



ASR Injection Summary WY 2023





MPWMD Board of Director's Meeting
Monday, April 17, 2023
General Manager's Report, Item No. 9
Slide-Deck Distributed to General Counsel, Board Members, General Manager and Copies
Provided to Members of the Public at the Meeting