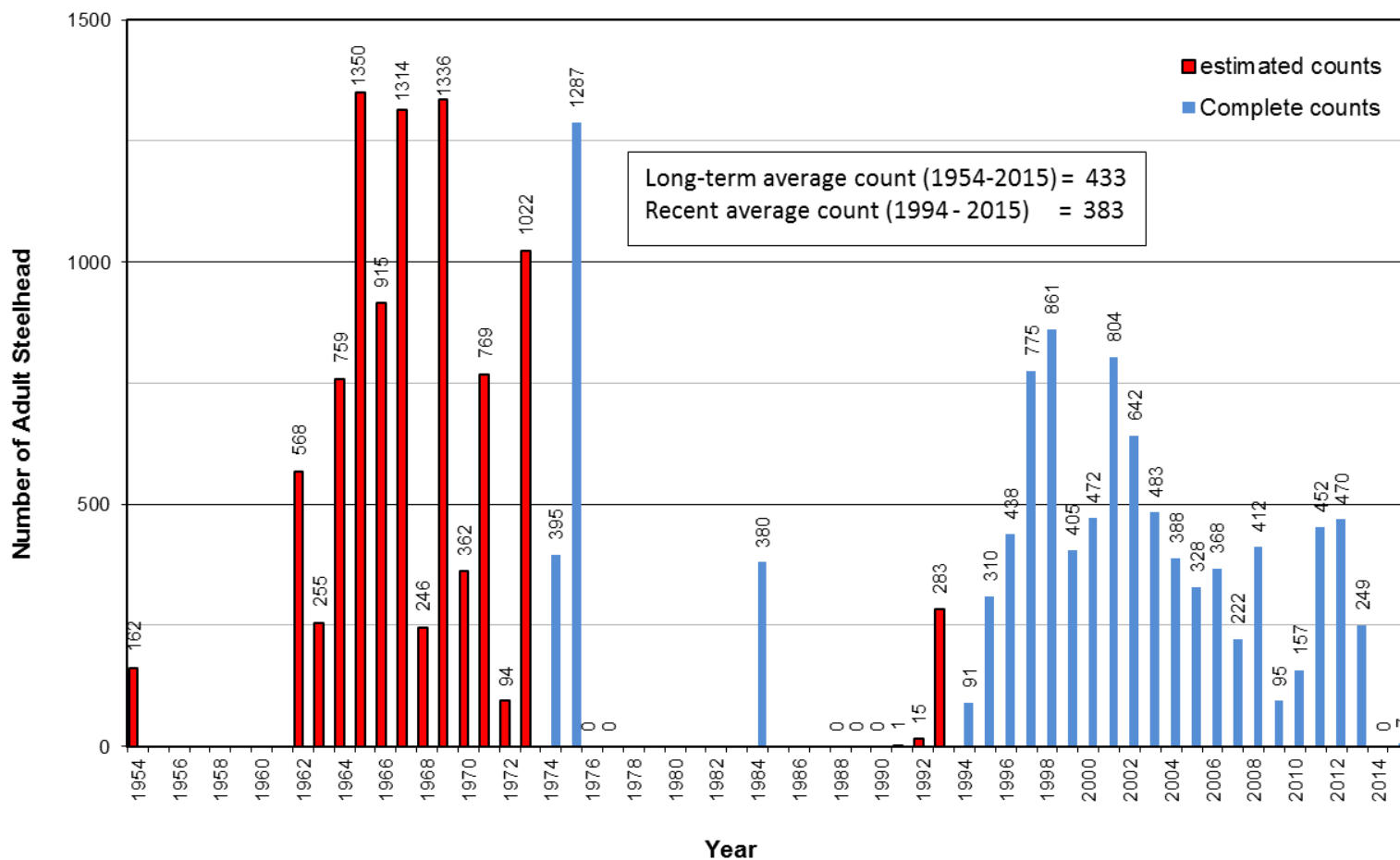


### Number of Adult Steelhead at San Clemente Dam

Selected Years: 1954-2015



Note: Counts are based on Snider (1983), Dettman (1986), CDFG and MPWMD files. The 1962-73 and 1991-93 counts at San Clemente Dam are the sum of daily numbers of fish observed by shutting off the flow in the fish ladder. The 1974, 1975, 1984, and 1994 to present are complete counts registered on an automatic counter. The 2007 counts are incomplete, low flows caused the district to pull counter on April 2. The river did not reach the ocean in 1976-1977, 1988-1990 and in 2014. The ladder was removed in 2015 as part of the San Clemente Dam Removal Project.