




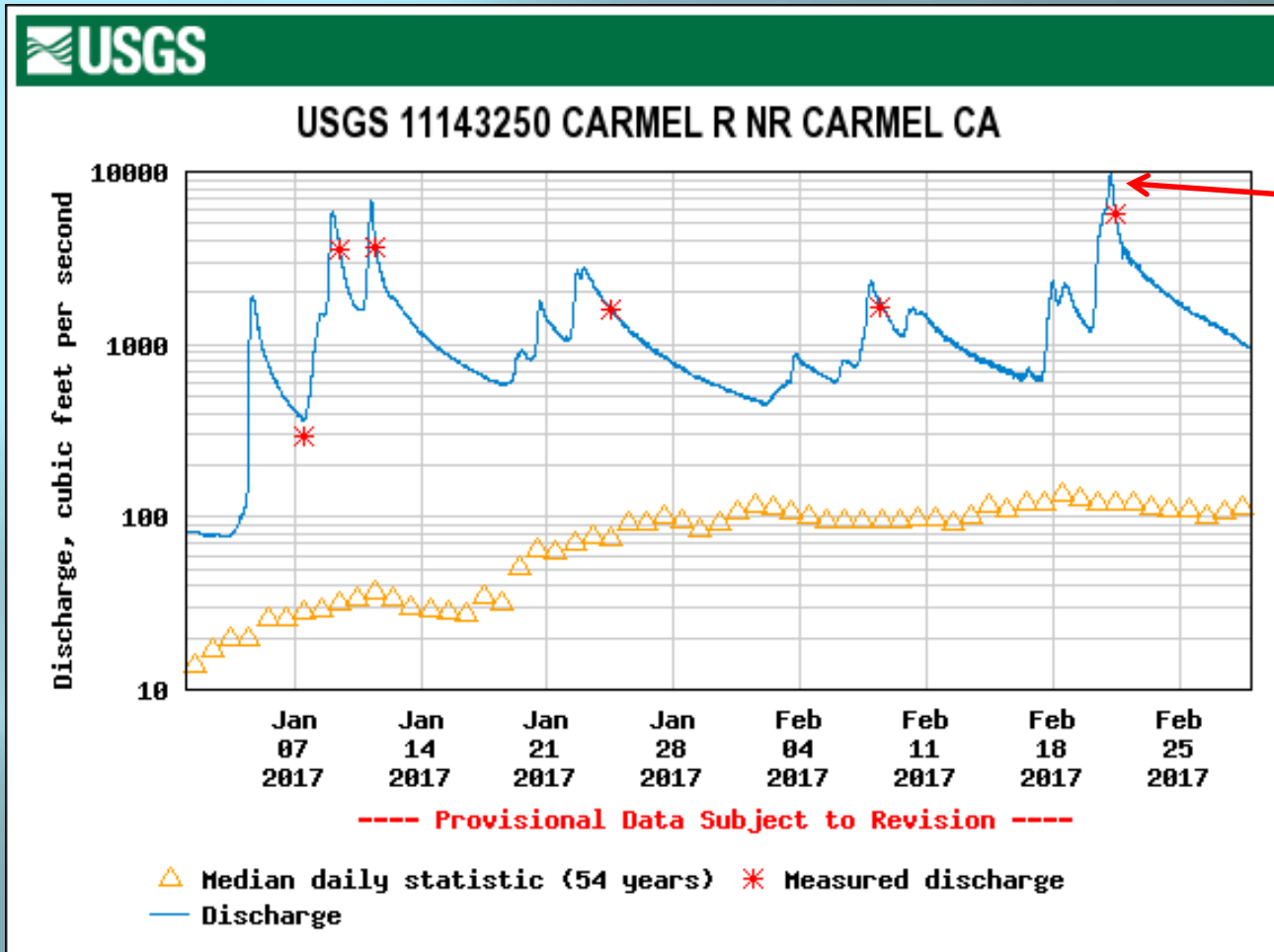
# **PUBLIC HEARINGS ITEM 12**



## **CONSIDER APPROVAL OF A CEQA ADDENDUM FOR THE CARMEL RIVER BANK STABILIZATION PROJECT AT RANCHO SAN CARLOS ROAD**

*Meeting Date: February 22, 2018*  
*Staff contact: Larry Hampson*

# 2016-17 Carmel River Winter Flows



- 9,570 cfs at 5 am on Feb. 21, 2017
- Fifth-highest flow since recording began in 1958
- Came after a series of previous high flows



# Downstream of Rancho San Carlos Road Bridge



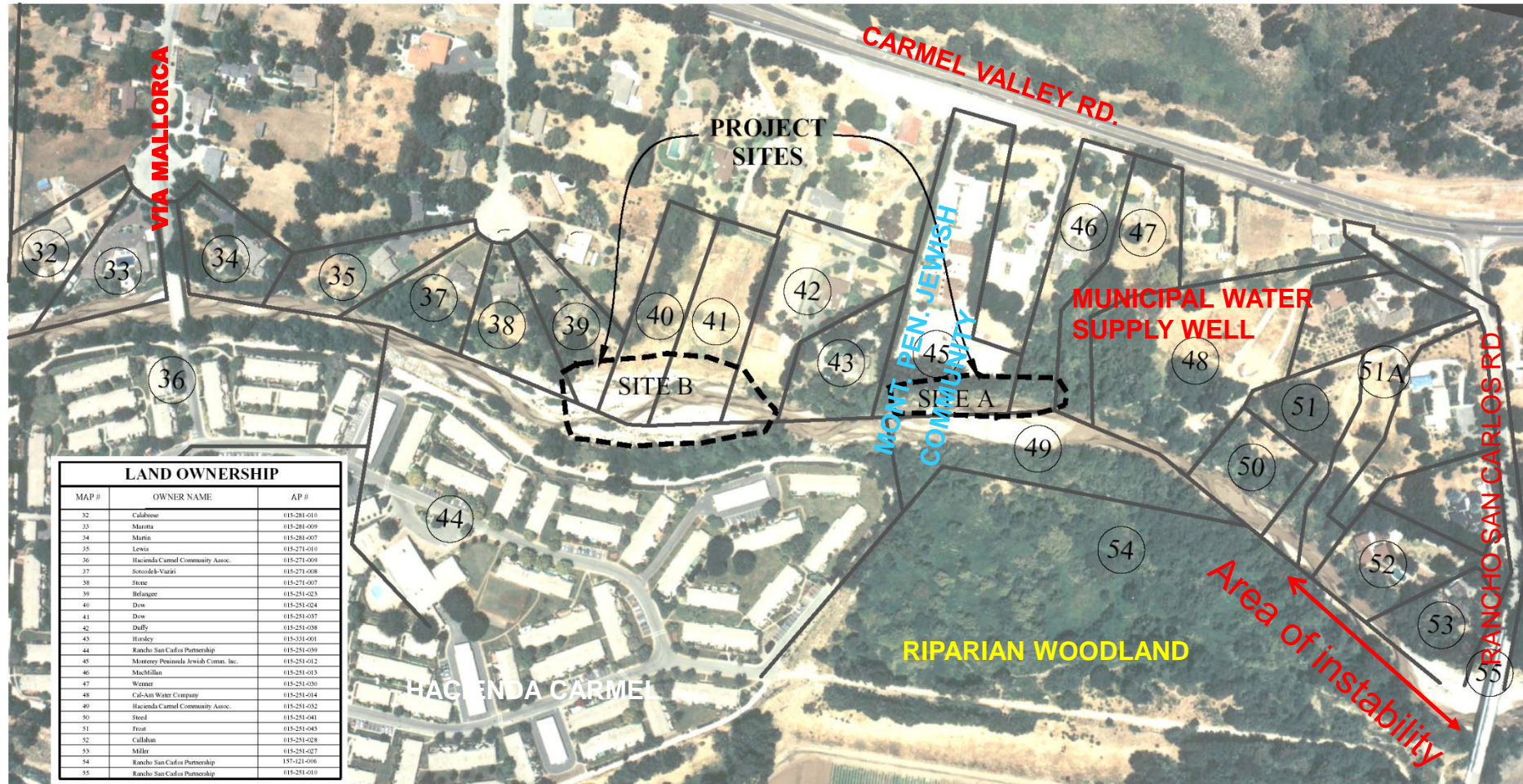
Carmel River at Rancho San Carlos Road Bridge, March 31, 2017



Carmel River at Rancho San Carlos Road Bridge, March 7, 2016



# CARMEL RIVER - SAN CARLOS MONITORING SITE RESTORATION PROJECT PROJECT AREA AND NEIGHBORING PARCEL LOCATIONS



LAND OWNERSHIP		
MAP #	OWNER NAME	AP #
32	Calabrese	015-281-010
33	Maritta	015-281-009
34	Marin	015-281-007
35	Levin	015-271-010
36	Hacienda Carmel Community Assoc.	015-271-009
37	Sorocko-Vaziri	015-271-008
38	Stane	015-271-007
39	Belanger	015-251-023
40	Dow	015-251-024
41	Dow	015-251-037
42	Duffy	015-251-038
43	Hardley	015-231-001
44	Rancho San Carlos Partnership	015-251-099
45	Monterey Peninsula Jewish Comm. Inc.	015-251-012
46	MacMillan	015-251-013
47	Werner	015-251-030
48	Cal-Am Water Company	015-251-014
49	Hacienda Carmel Community Assoc.	015-251-032
50	Stead	015-251-041
51	Frost	015-251-045
52	Callahan	015-251-028
53	Miller	015-251-027
54	Rancho San Carlos Partnership	157-021-006
55	Rancho San Carlos Partnership	015-251-010

AIRIAL PHOTO DATE: JULY 7, 1999

DESIGNED BY	DATE	REV. DATE	PREPARED FOR	CARMEL RIVER	PLANS PREPARED UNDER	<b>GMA</b> GRAHAM MATTHEWS & ASSOCIATES Hydrology • Geomorphology • Stream Restoration P.O. Box 1516, Watsonville, CA 95095-1516 (530) 421-5127 ph (530) 421-5128 fax <a href="mailto:info@grahammatthews.com">info@grahammatthews.com</a>	 SCALE FEET 1" = 500'	SHEET 2/6
PREPARED BY	WEN	9/01	MONTEREY PENINSULA WATER MANAGEMENT DISTRICT P.O. BOX 85 MONTEREY, CA 93942	SAN CARLOS MONITORING SITE RESTORATION PROJECT MONTEREY COUNTY, CALIFORNIA	SUPERVISION OF			



# Project Location



# Restoration Project Benefits

- Preserve mature riparian forest area
- Preserve a Native American cultural resource (Santa Barbara sedge)
- Reduce additional bank erosion and movement of sediment and trees downstream that could threaten several homes and the Congregation Beth Israel synagogue on the north side of the river and the 300-unit Hacienda Carmel retirement community
- Increase streamside habitat
- Help to stabilize an historically unstable reach



# Crib wall to protect streambank



# California Environmental Quality Act

- District Board adopted the Program Environmental Impact Report for the Carmel River Management Plan (CRMP) on October 29, 1984 and adopted an Addendum to add measures to protect California red-legged frogs (CRLF) on August 18, 1997
  - CRMP evaluated impacts of stream restoration projects on the environment of the Carmel River
  - PEIR and Addendum includes mitigation measures concerning impacts to steelhead, CRLF, and cultural resources



# California Environmental Quality Act (continued)

- The District has retained LSA for assistance with complying with requirements to protect Native American cultural resources
- District staff and LSA have met on site to discuss the importance of protecting Santa Barbara sedge
- District is in process of revising design to protect this cultural resource
- The design and mitigation measure (i.e., completing a cultural resources study) are consistent with the previously adopted PEIR and Addendum for the Carmel River Management Plan

# Recommendations

- Adopt Resolution No. 2018-03 approving the RSC Project and Addendum to the Carmel River Management Plan Program Environmental Impact Report; and
- Authorize staff to file a Notice of Determination with the Monterey County Clerk





# FOR MORE INFORMATION

District website:

[www.mpwmd.net](http://www.mpwmd.net)

PowerPoint presentations will be  
posted on the website the day  
after the meeting

Staff contact for this item:

Larry Hampson, District Engineer

[larry@mpwmd.net](mailto:larry@mpwmd.net)

(831) 658-5620