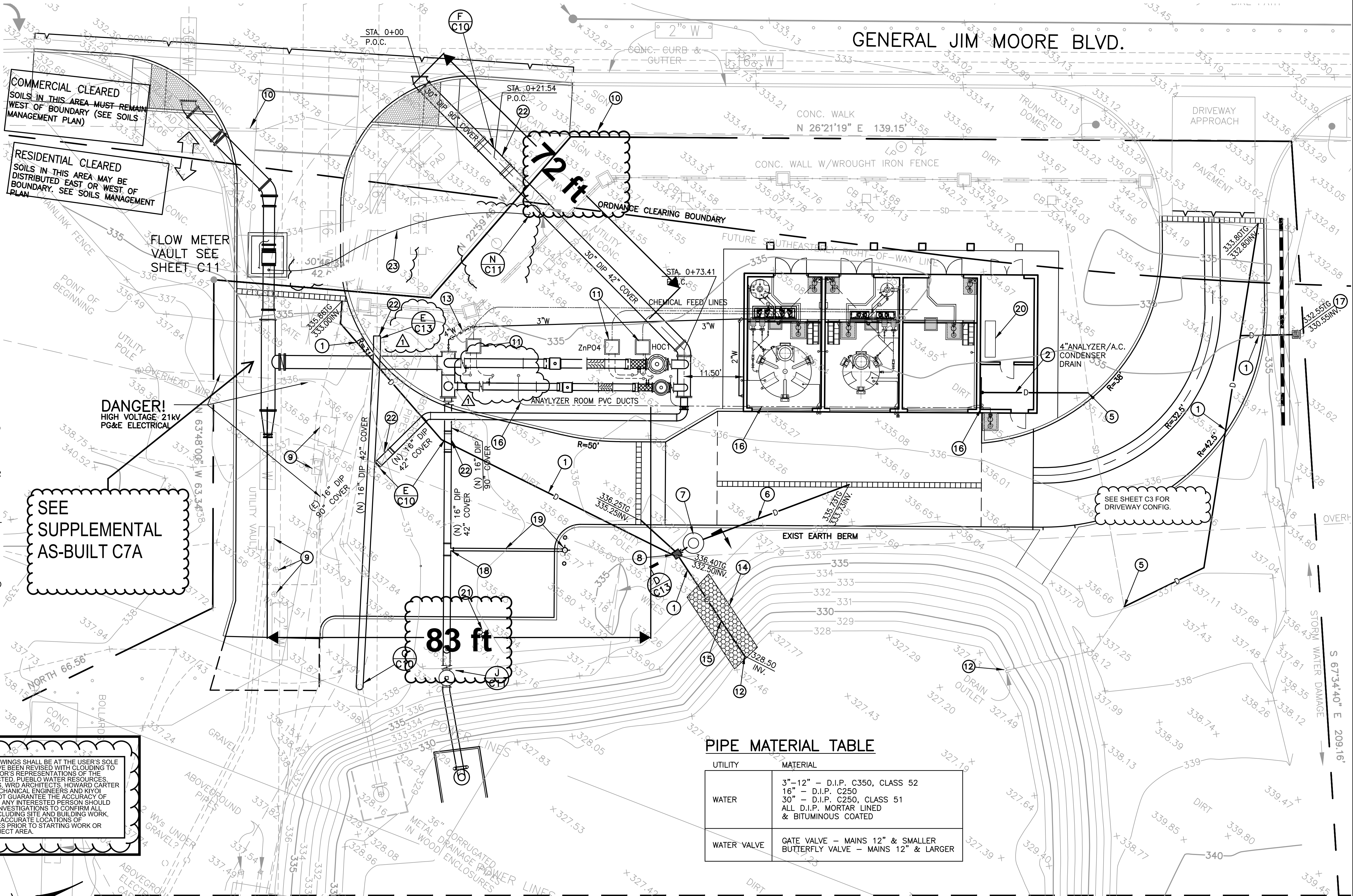
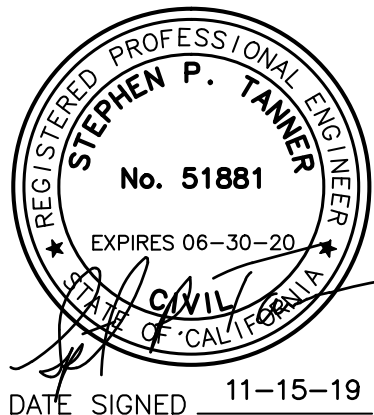


CONSTRUCTION NOTES

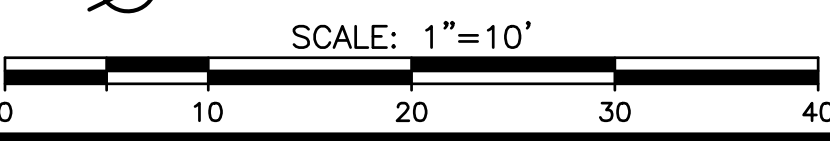
- 1 CONSTRUCT 8" TYPE S HDPE STORM DRAIN.
- 2 CONSTRUCT 4" TYPE S HDPE STORM DRAIN.
- 3 NOT USED
- 4 NOT USED
- 5 CONNECT 8" HDPE TO EXIST 8" HDPE. CONTRACTOR TO VERIFY EXIST DEPTH AND LOCATION OF EXIST 8" HDPE.
- 6 CONSTRUCT 6" TYPE S HDPE STORM DRAIN.
- 7 CONSTRUCT LOADING RACK SUMP 4' O.D. X 4' DEEP WITH 24" STANDARD MANHOLE COVER PER SECTION "D" SHEET C13
- 8 CONSTRUCT BROOKS PRODUCT CB-1818 18"x18" CATCH BASIN WITH GRATE (ADA COMPLIANT) OR APPROVED EQUAL BY THE OWNER.
- 9 ADJUST EXISTING UTILITY VALVES, VAULT LIDS, TO GRADE AS REQUIRED
- 10 EXIST FIBER OPTICS CABLE WITH CONCRETE CAP. CONTRACTOR TO VERIFY LOCATION AND DEPTH PRIOR TO WORK IN THIS AREA
- 11 INSTALL 30"x30"x30" DEEP CONCRETE JUNCTION VAULTS FOR CHEMICAL FEED DOUBLE CONTAINMENT LINES. USE ALHAMBRA A-1601B 24" WATER-TIGHT COVER AND FRAME, SEE DETAIL F SHEET C7. SLOPE PVC CONDUITS BACK TO CHEMICAL BUILDING @ MIN. 2% SLOPE. SEE DETAIL J SHEET M4
- 12 INSTALL 8" RED VALVE CO., TIDEFLEX TF-1 CHECK VALVE ON EXISTING HDPE OUTFALL LINE.
- 13 INSTALL 4" GATE VALVE, 4" REDUCED PRESSURE BACKFLOW PREVENTION AND RISER ASSEMBLY.
- 14 CONSTRUCT 6' WIDE GRASSCRETE SLOPE PROTECTION PER MANUFACTURERS RECOMMENDATIONS
- 15 CONSTRUCT 8" DR17 (PE 4710) HDPE FUSION JOINED STORM DRAIN PIPE. PIPE TO BE PLACED ON TOP OF GRASSCRETE SLOPE PROTECTION. SECURE PIPE WITH PLASTIC PIPE JOINT RESTRAINER ASSEMBLY PER CALTRANS STANDARD DETAIL D87B AT OUTLET AND MID SPAN.
- 16 CONSTRUCT 2 EACH 2 1/2" SCH 80 DUCTS WITH LONG SWEEP BENDS. INSTALL 2 EACH 0.25" I.D. X 0.35" O.D. PARAFLEX TUBING IN EACH DUCT , ROUTE FROM 16" AND 20" TO ANALYZER ROOM. MOUNT 2 1/2" DUCTS TO INSIDE WALL 24"-36" ABOVE SUB-FLOOR LEVEL.
- 17 CONSTRUCT 18"x18" LOW PROFILE ADAPTER (PART NO. 1830) WITH 18"x18" ATRIUM GRATE (PART NO. 1881) AND 8" UNIVERSAL LOCKING OUTLET (PART NO. 1888) AS MANUFACTURED BY NDS OR APPROVED EQUAL
- 18 CONSTRUCT 16"x16"x6" D.I.P. TEE FOR FIRE HYDRANT (MJ W/RESTRAINT)
- 19 CONSTRUCT 6" D.I.P. FIRE HYDRANT LATERAL WITH 42" COVER AND INSTALL STANDARD 2 1/2" X 4" FIRE HYDRANT PER CAL-AM STANDARD DETAILS
- 20 AIR COMPRESSOR IN ELECTRIC ROOM SEE SHEET C-11
- 21 LIGHT POLE SEE DETAIL 7 SHEET C6 FOR FOUNDATION, SEE ELECTRIC PLANS FOR ADDITIONAL DETAILS
- 22 TRANSITION FROM 90" COVER OVER TOP OF PIPE TO 42" COVER OVER TOP OF PIPE
- 23 1/2" TYPE K COPPER TUBING WITH 36" MIN. COVER. ROUTE FROM METER VAULT TO SAMPLE STATION SHOWN ON SHEET C11 . LOCATE ADJACENT TO RELOCATED AIR-VAC ASSEMBLY.



RELIANCE ON THESE DRAWINGS SHALL BE AT THE USER'S SOLE RISK. THE DRAWINGS HAVE BEEN REVISED WITH CLOUDING TO REFLECT THE CONTRACTOR'S REPRESENTATIONS OF THE FACILITIES AS CONSTRUCTED. PUEBLO WATER RESOURCES, MAC DESIGN ASSOCIATES, WRO ARCHITECTS, HOWARD CARTER AND ASSOCIATES, AG MECHANICAL ENGINEERS AND KNOX ENGINEERING, INC. DO NOT GUARANTEE THE ACCURACY OF SUCH INFORMATION, AND ANY INTERESTED PERSON SHOULD MAKE THEIR OWN FIELD INVESTIGATIONS TO CONFIRM ALL CONSTRUCTED WORK INCLUDING SITE AND BUILDING WORK, ELECTRICAL WIRING AND ACCURATE LOCATIONS OF UNDERGROUND FACILITIES PRIOR TO STARTING WORK OR EXCAVATION IN THE PROJECT AREA.



UNAUTHORIZED CHANGES & USES CAUTION:
The engineer preparing these plans will not be responsible for, or liable for, unauthorized changes to or uses of these plans. All changes to the plans must be in writing and must be approved by the preparer of these plans.



SCALE:
HOR. 1"=10'
VER. 1"=N/A

WARNING
0 1/2 1
IF THIS BAR DOES NOT MEASURE 1" THEN DRAWING IS NOT TO SCALE

DESIGNED STP
DRAWN TLA/FH
CHECKED SPT

MAC Design Associates
CIVIL ENGINEERING * LAND PLANNING * BRIDGE DESIGN
1933 CLIFF DRIVE, SUITE 6, SANTA BARBARA, CALIF. 93109 (805) 957-4748



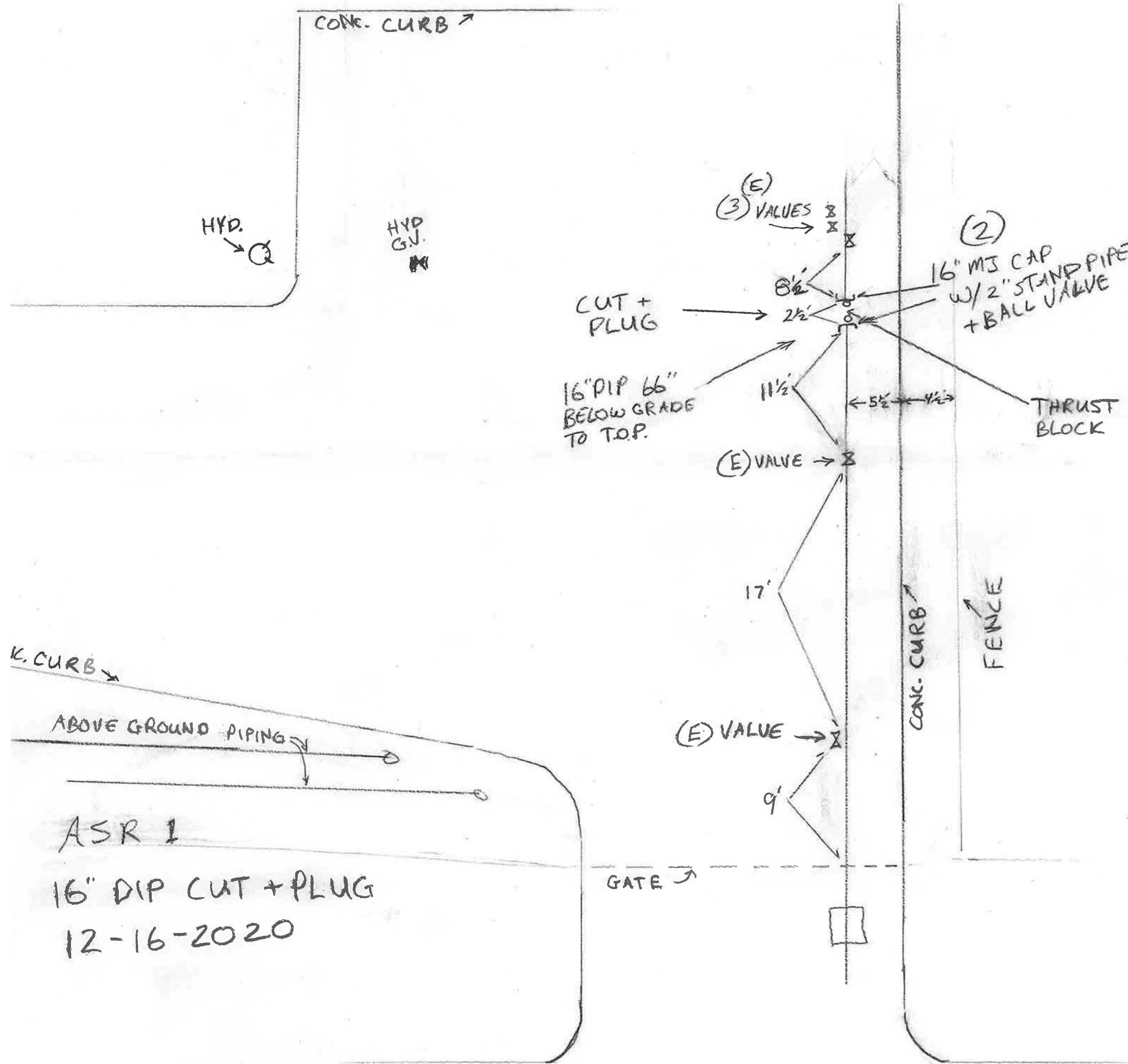
Pueblo Water Resources
4478 Market St., Suite 705
Ventura, CA 93003
(805) 644-0470

UTILITY AND PIPING PLAN
MONTEREY PENINSULA WATER MANAGEMENT DISTRICT
SANTA MARGARITA ASR FACILITY SITE EXPANSION
1910 GENERAL JIM MOORE BOULEVARD

PROJECT NO.
W.O. 0451
C7

0451FCPBLDG.DWG 04/12/19 08:50:21 AM PDT

ASR 1



ASR 1

16" DIP CUT + PLUG
12-16-2020

RELIANCE ON THESE DRAWINGS SHALL BE AT THE USER'S SOLE RISK. THE DRAWINGS HAVE BEEN REVISED WITH CLOUDING TO REFLECT THE CONTRACTOR'S REPRESENTATIONS OF THE FACILITIES AS CONSTRUCTED. PUEBLO WATER RESOURCES, MAC DESIGN ASSOCIATES, WRD ARCHITECTS, HOWARD CARTER AND ASSOCIATES, AG MECHANICAL ENGINEERS AND KIVOI ENGINEERING, INC. DO NOT GUARANTEE THE ACCURACY OF SUCH INFORMATION, AND ANY INTERESTED PERSON SHOULD MAKE THEIR OWN FIELD INVESTIGATIONS TO CONFIRM ALL CONSTRUCTED WORK INCLUDING SITE AND BUILDING WORK, ELECTRICAL WIRING AND ACCURATE LOCATIONS OF UNDERGROUND FACILITIES PRIOR TO STARTING WORK OR EXCAVATION IN THE PROJECT AREA.

REGISTERED PROFESSIONAL ENGINEER
MICHAEL A. CACERES
No. 26887
EXPIRES 12-31-21
CIVIL
STATE OF CALIFORNIA
DATE SIGNED 11-15-19

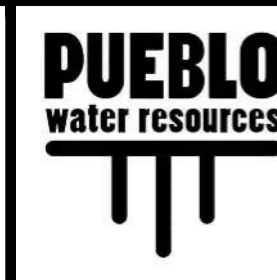
REV	DATE	BY	DESCRIPTION

SCALE:	
HOR.	N/A
VER.	N/A

WARNING
0 1/2 1
IF THIS BAR DOES NOT MEASURE 1" THEN DRAWING IS NOT TO SCALE

DESIGNED	MAC
DRAWN	TLA/FH
CHECKED	SPT

MAC Design Associates
CIVIL ENGINEERING * LAND PLANNING * BRIDGE DESIGN
1933 CLIFF DRIVE, SUITE 6, SANTA BARBARA, CALIF. 93109 (805) 957-4748



Pueblo Water Resources
4478 Market St., Suite 705
Ventura, CA 93003
(805) 644-0470

CAL TRANS STANDARD PLANS
MONTEREY PENINSULA WATER MANAGEMENT DISTRICT
SANTA MARGARITA ASR FACILITY SITE EXPANSION
1910 GENERAL JIM MOORE BOULEVARD

PROJECT NO.
W.O. 0451
C7A