



Figure 1 – Plaque on east abutment wall



Figure 2 – Los Padres Dam and Reservoir





Figure 3 – Looking south to dam face



Figure 4 - Looking south to plunge pool and Behavioral Guidance System (BGS) pipe outlet





Figure 5 – Bailey Bridge and plunge pool at end of spillway





Figure 6 – looking east at Behavioral Guidance System exit



Figure 7 – Existing weir fishway (Denil ladder) entrance in plunge pool





Figure 8 – looking downstream from top of dam to spillway



Figure 9 – east abutment





Figure 10 – looking east along top of dam toward spillway



Figure 11 – looking west along top of dam from mid-point of dam to west abutment





Figure 12 – Looking upstream (south) to west abutment



Figure 13 – boulders placed to stabilize downstream face





Figure 14 – Behavior Guidance System at dam spillway



Figure 15 – Looking west at spillway w/BGS anchored to left wall and dam access road in background.



Figure 16 – top of foreset slope





Figure 17 – upper reservoir silt and organic deposits



Figure 18 – siltation at upper end of reservoir





Figure 19 – upstream end of inundation zone



Figure 20 – debris in reservoir, January 1995





**Above: December 12, 1988**

**Below: October 15, 2007**



**Figure 21 – reservoir comparison**



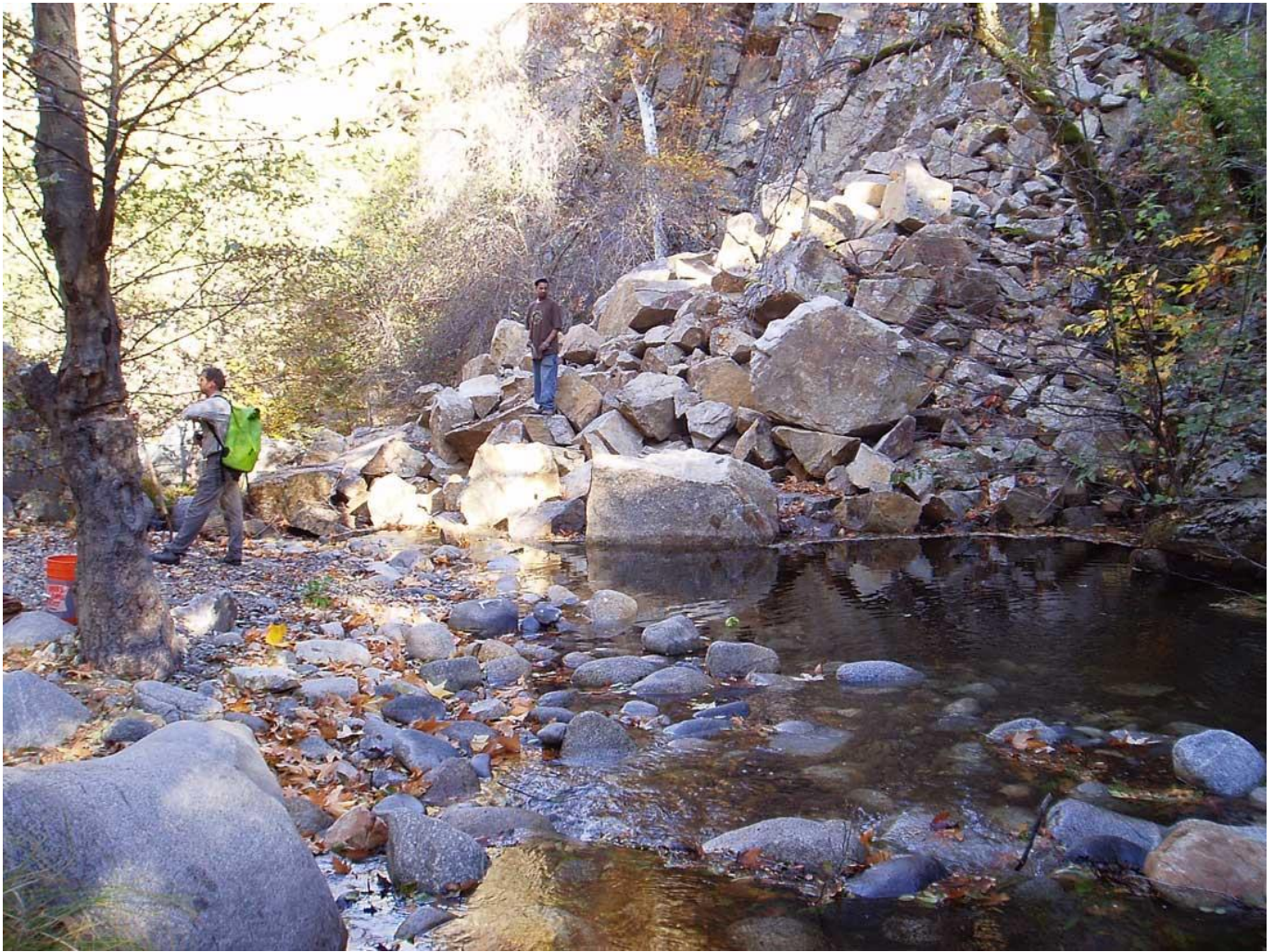
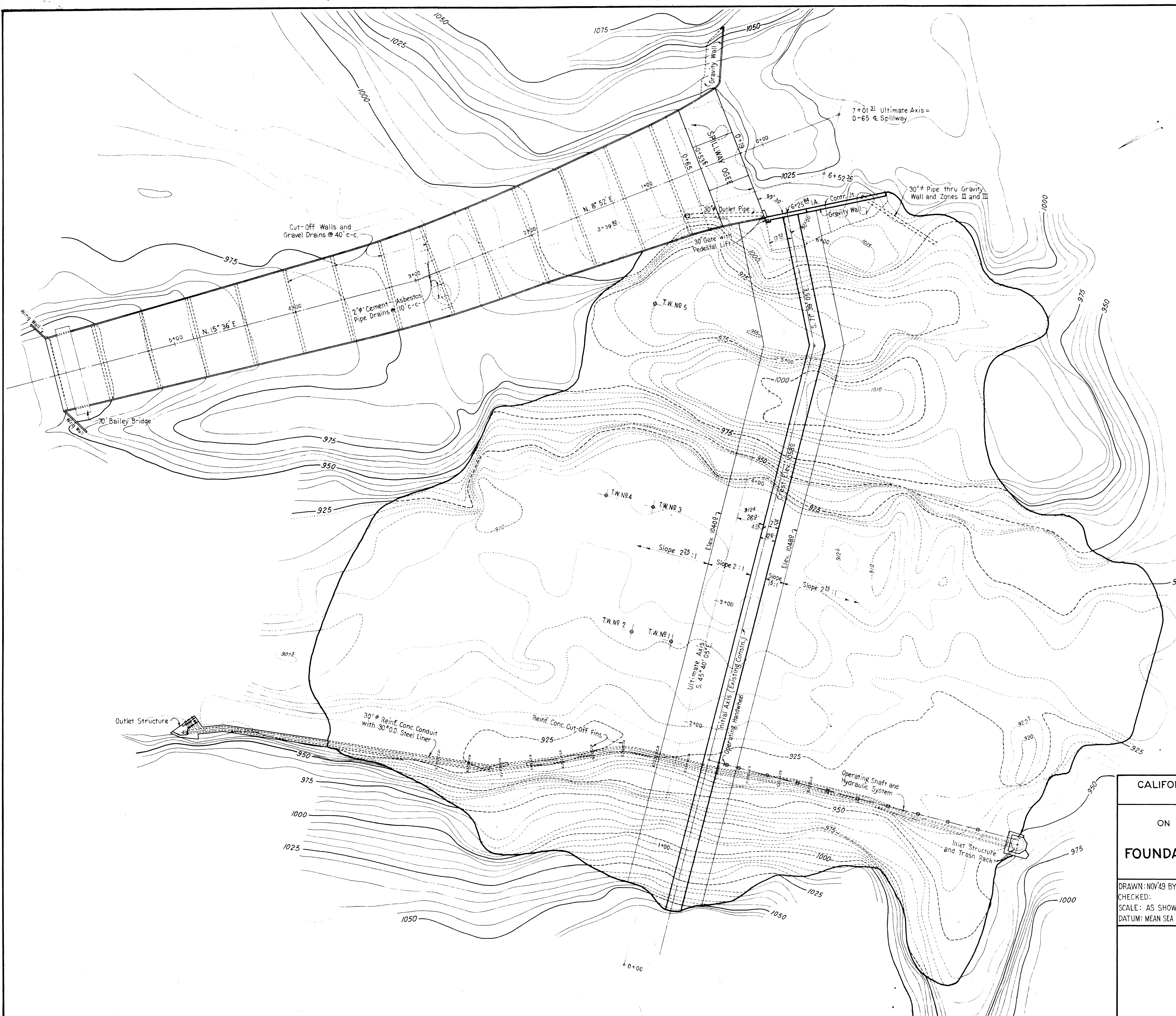


Figure 22 – slide in upper Carmel River above Los Padres Dam





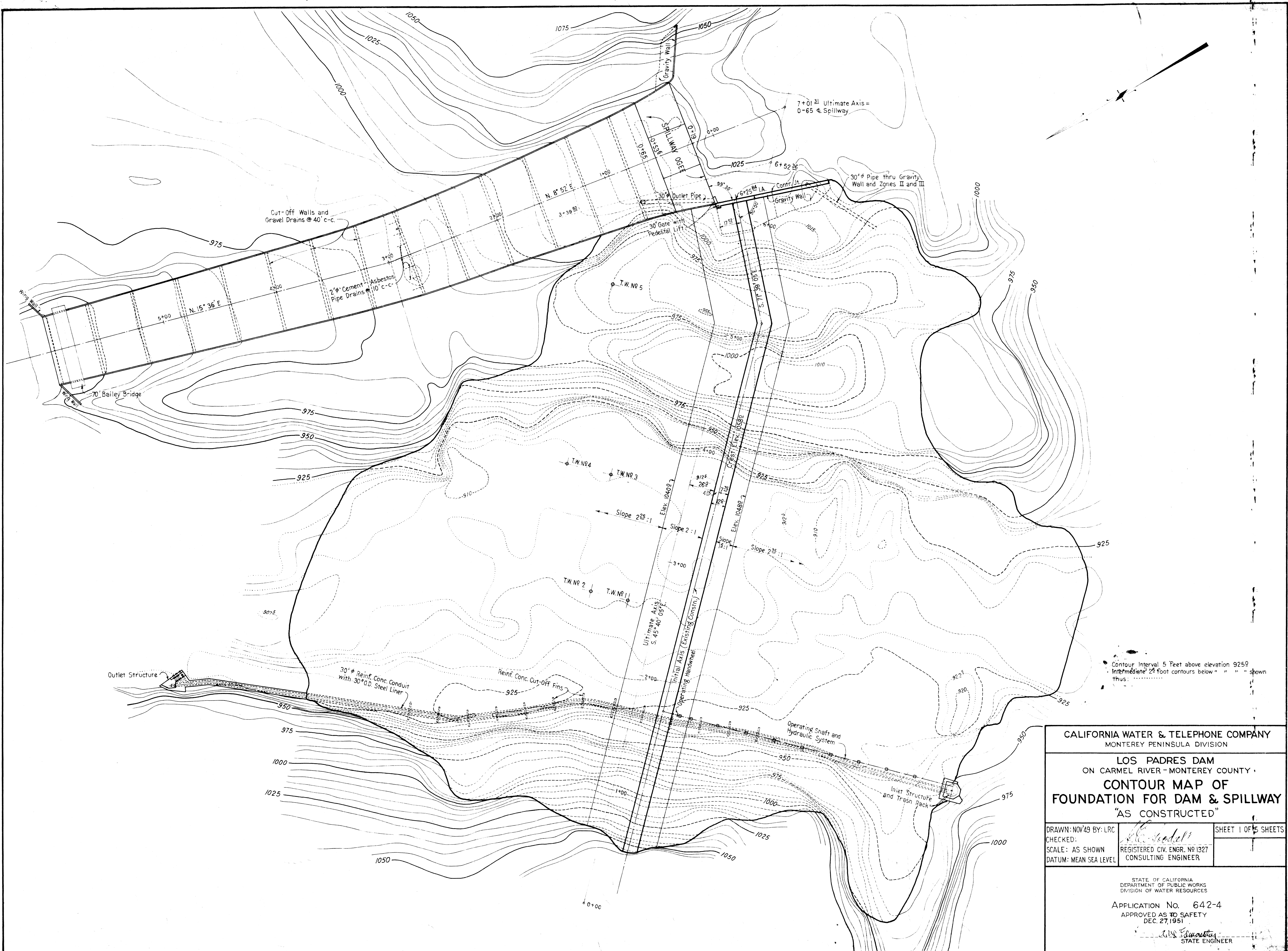
Contour Interval 5 Feet above elevation 9259  
Intermediate 25 foot contours below " " " " shown  
thus: .....

CALIFORNIA WATER & TELEPHONE COMPANY MONTEREY PENINSULA DIVISION	
LOS PADRES DAM ON CARMEL RIVER - MONTEREY COUNTY	
CONTOUR MAP OF FOUNDATION FOR DAM & SPILLWAY "AS CONSTRUCTED"	
DRAWN: NOV'49 BY: LRC CHECKED: SCALE: AS SHOWN DATUM: MEAN SEA LEVEL	SHEET 1 OF 5 SHEETS
STATE OF CALIFORNIA DEPARTMENT OF PUBLIC WORKS DIVISION OF WATER RESOURCES	
APPLICATION No. 642-4 APPROVED AS TO SAFETY DEC. 27, 1951	
STATE ENGINEER	





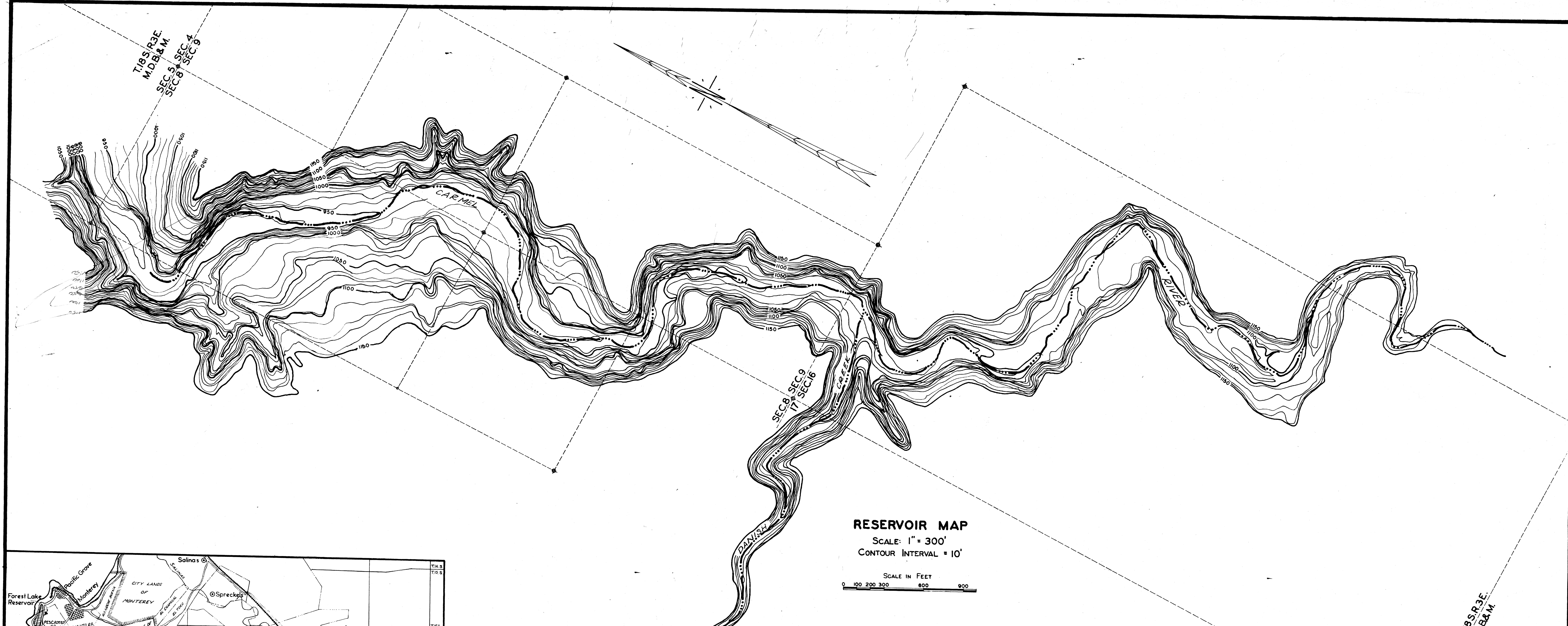




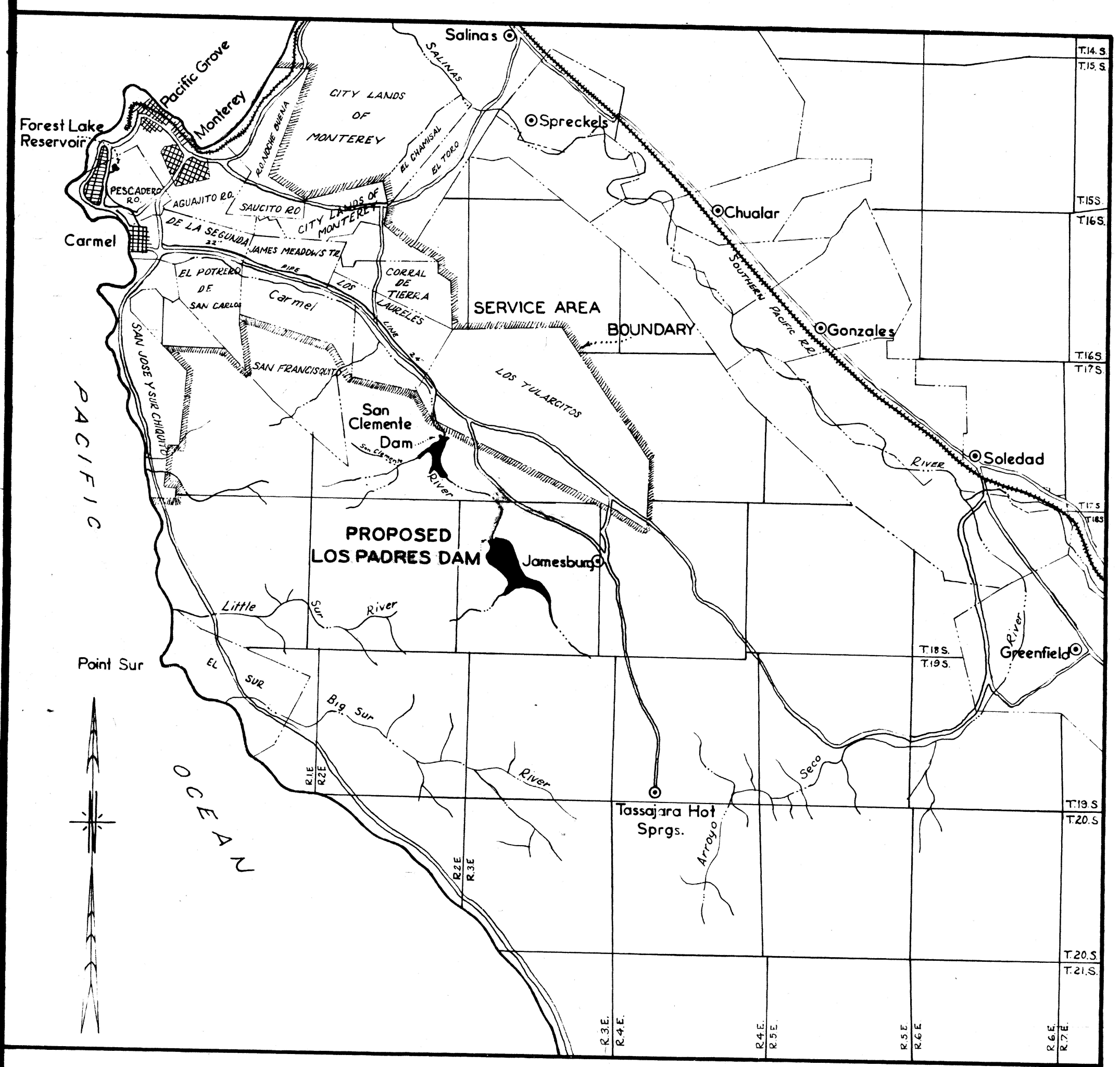
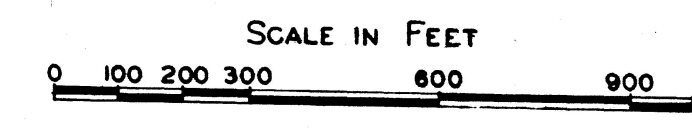
Contour Interval 5 Feet above elevation 9259  
Intermediate 25 foot contours below " " " shown  
thus: .....

CALIFORNIA WATER & TELEPHONE COMPANY MONTEREY PENINSULA DIVISION	
LOS PADRES DAM ON CARMEL RIVER - MONTEREY COUNTY	
CONTOUR MAP OF FOUNDATION FOR DAM & SPILLWAY "AS CONSTRUCTED"	
DRAWN: NOV'49 BY: LRC CHECKED: SCALE: AS SHOWN DATUM: MEAN SEA LEVEL	SHEET 1 OF 5 SHEETS
REGISTERED CIV. ENGR. NO 1327 CONSULTING ENGINEER	
STATE OF CALIFORNIA DEPARTMENT OF PUBLIC WORKS DIVISION OF WATER RESOURCES	
APPLICATION No. 642-4 APPROVED AS TO SAFETY DEC. 27, 1951	
STATE ENGINEER	

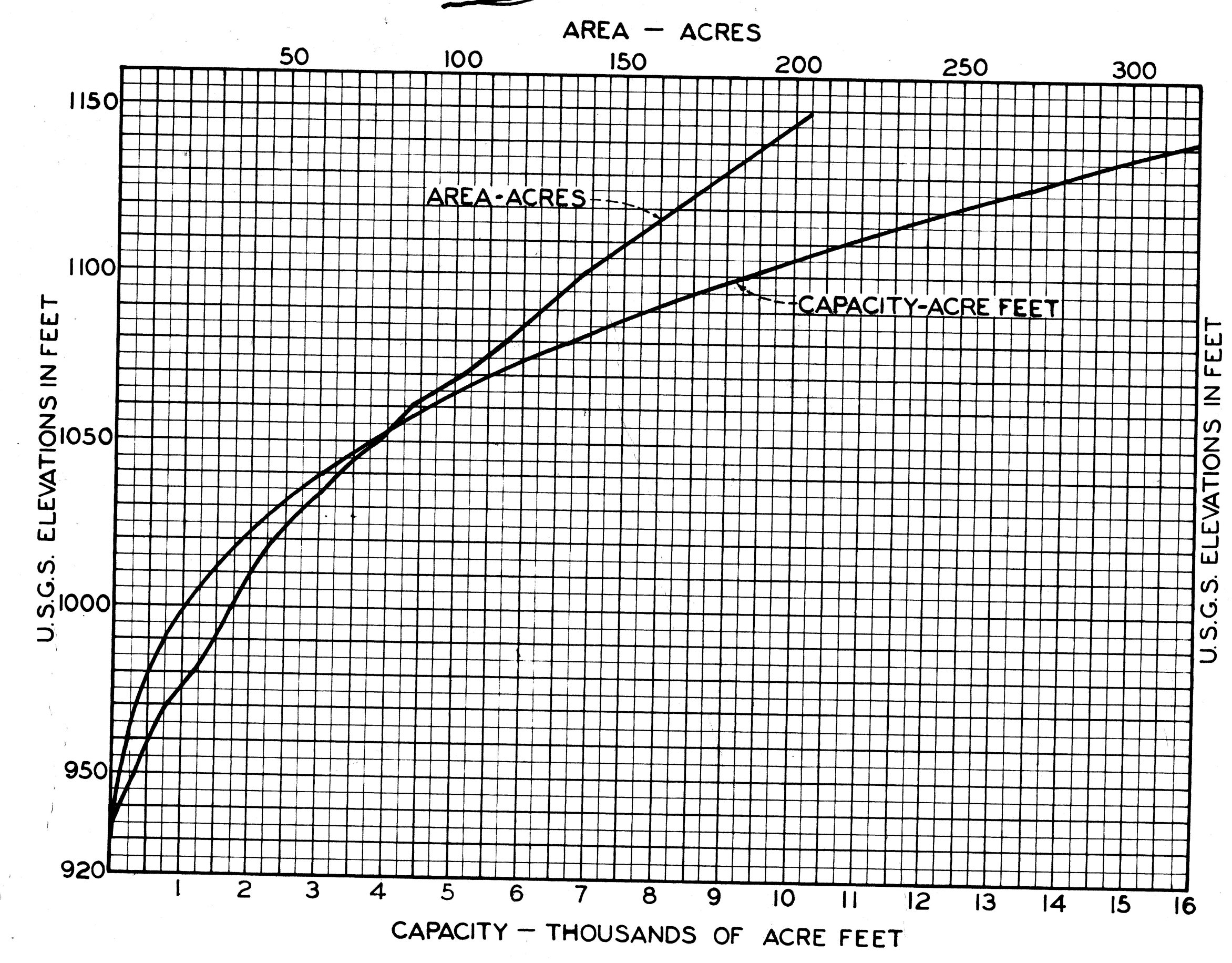




**RESERVOIR MAP**  
 SCALE: 1" = 300'  
 CONTOUR INTERVAL = 10'



**VICINITY MAP**  
 Scale in Miles  
 0 1 2 3 4 8 12



**AREA & CAPACITY CURVES**

I, Harry Reinhardt, do hereby certify that this map was made from notes taken during an actual survey made under my supervision during the year 1947 and that it correctly represents the work described in the accompanying application, the location of pipe lines and the area to be served.

*Harry Reinhardt*  
 Registered Civil Engineer, No. 1920

CALIFORNIA WATER & TELEPHONE CO.  
 MONTEREY PENINSULA DIVISION

**LOS PADRES DAM**  
 ON CARMEL RIVER MONTEREY COUNTY

**RESERVOIR MAP**

Drawn by: R.B.#J.K.      Datum: U.S.G.S.  
 Traced by: J.S.      Scale: As Shown

Approved by: *Harry Reinhardt*  
 Registered Civil Engineer No. 1920