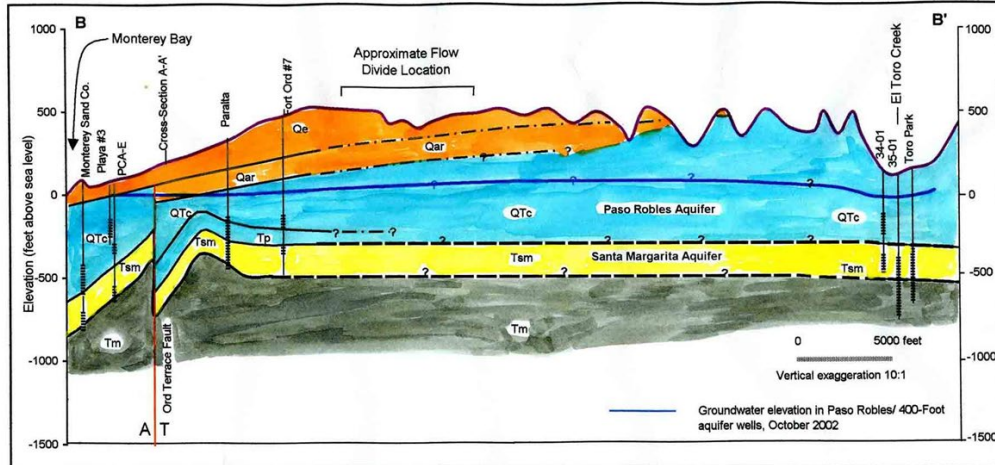


## EXHIBIT 2-B

### Other Useful Figures

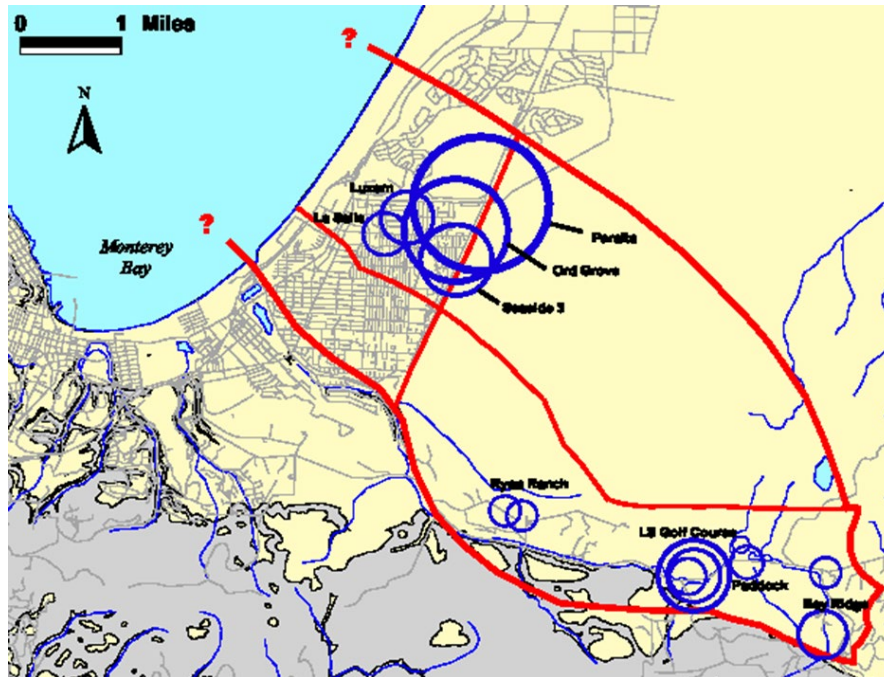


Location of cross-section is shown on Figure 3. Geology from Clark and others, 1997; Fugro West, Inc., 1997b; and WRIME, Inc., 2003. Formations: Tm = Monterey Formation; Tsm = Santa Margarita Sandstone; Tp = Purisima Formation; QTC = continental deposits; Qar = Aromas Sand; Qe = eolian deposits (dunes); Qt = terrace deposits; Qa = undifferentiated alluvial deposits. See text and Figure 3 for descriptions. Fault movement: arrows indicate vertical movement; A = horizontal movement away from the viewer; T = toward viewer.

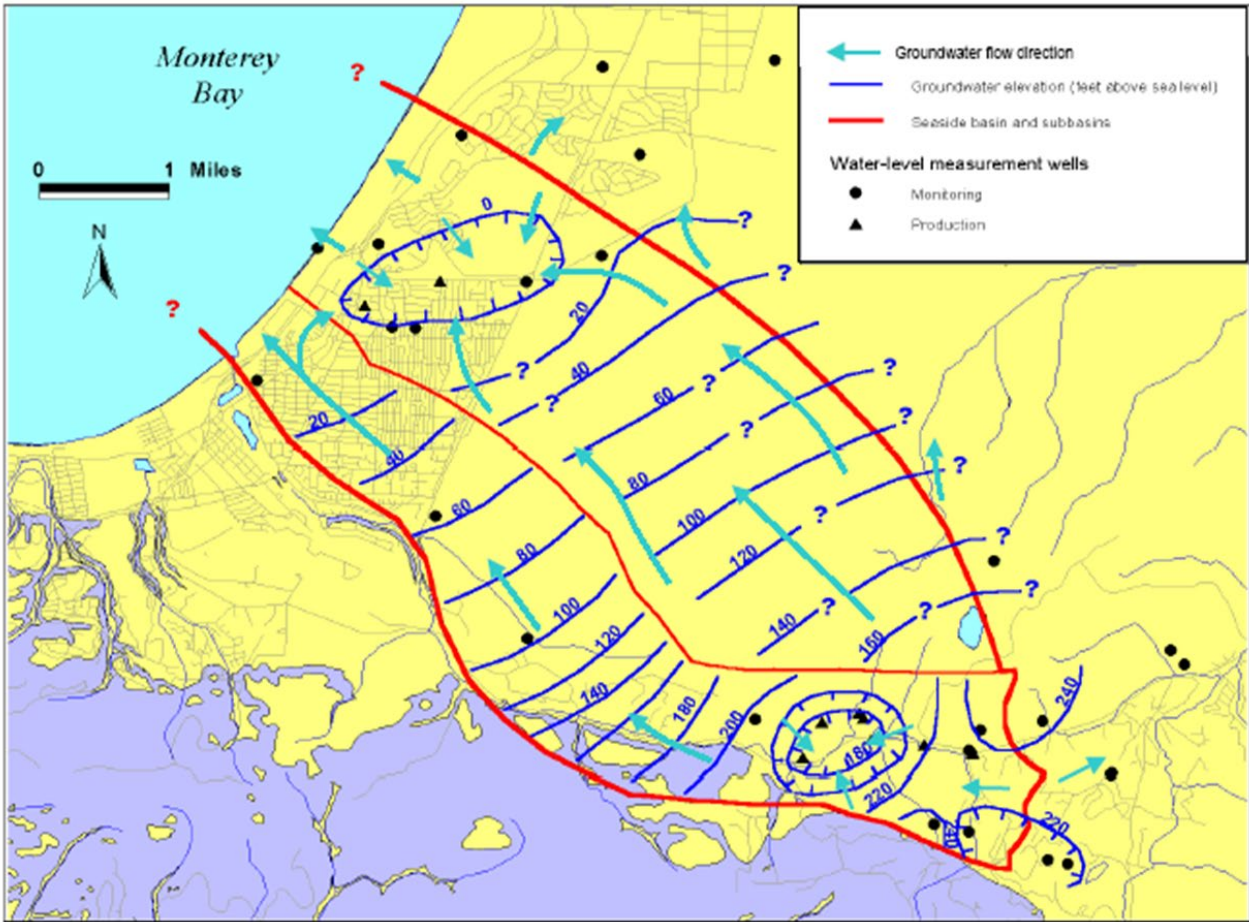
Figure 5. Hydrogeologic Cross-Section B-B'

4/12/05

Xsec\_B-B'.xls



Areas of Pumping



Direction of Groundwater Flow