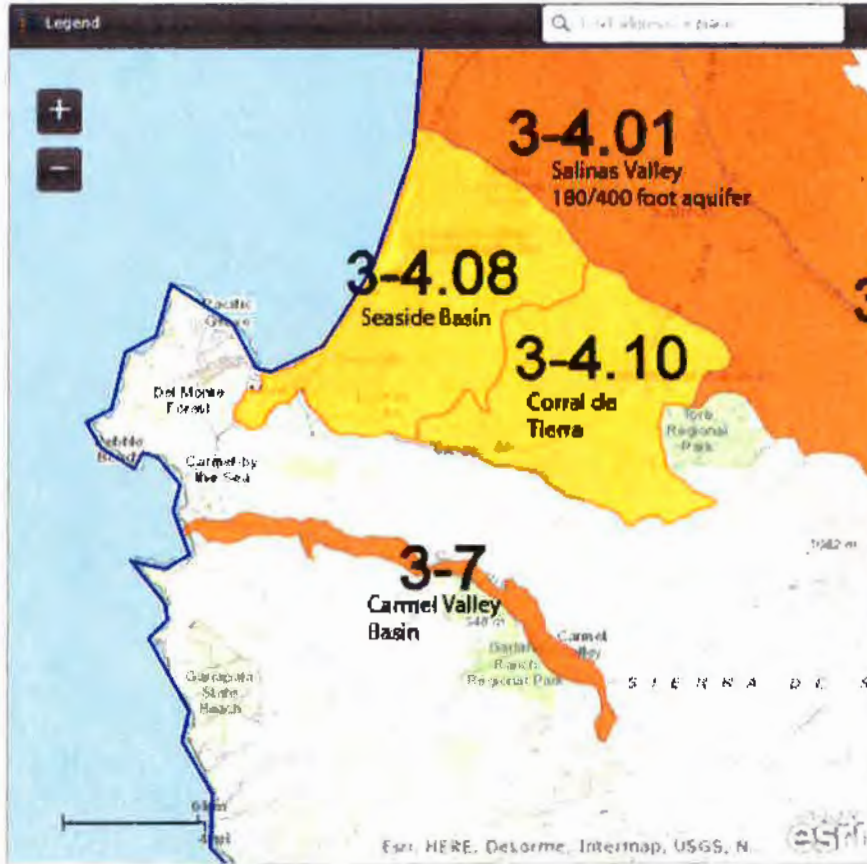


Submitted by staff
Item 3

CASGEM Groundwater Basin Prioritization

The map below contains the CASGEM Basin Prioritization results. Click on the basin of interest and an informational window will open. Click on the link at the bottom of the window to access the Basin Summary Sheets. Zoom in three times to view basin numbers on the map. For more information visit the [Basin Prioritization page](#). If you have additional questions please contact the appropriate [Region Office](#).

The interactive map below may take 1-2 minutes to load.



GROUNDWATER HOME

CASGEM

CASGEM Program & Legislation

What's New? Updated 10/02/14

Final Basin Prioritization

Undeveloped Basins

Monitoring Entities

Documents & Outreach

FAQs

Public Comments

Subscribe to Email Updates

Contacts

SUSTAINABLE
GROUNDWATER
MANAGEMENT

GROUNDWATER
INFORMATION CENTER

BULLETIN 118



Sign In

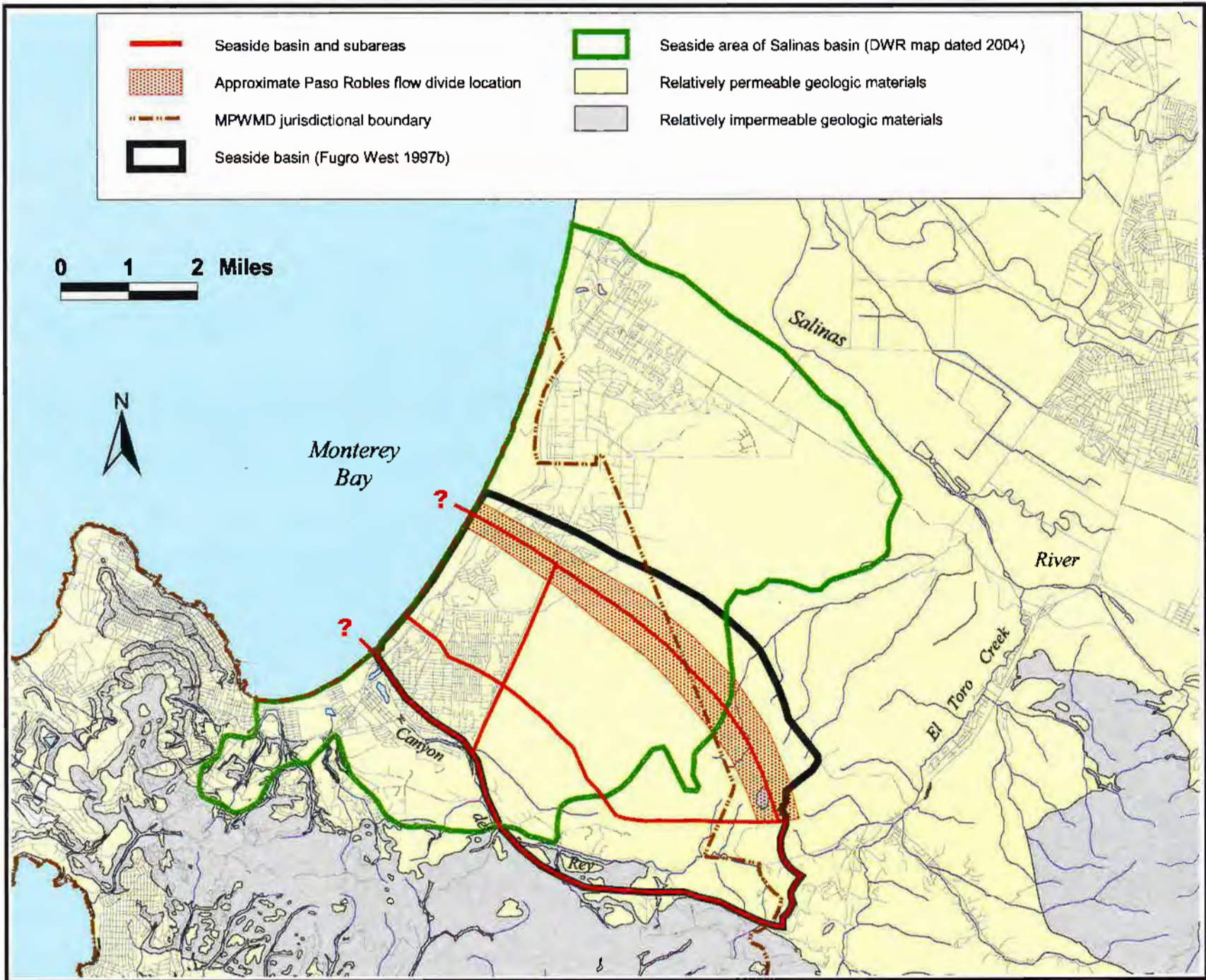
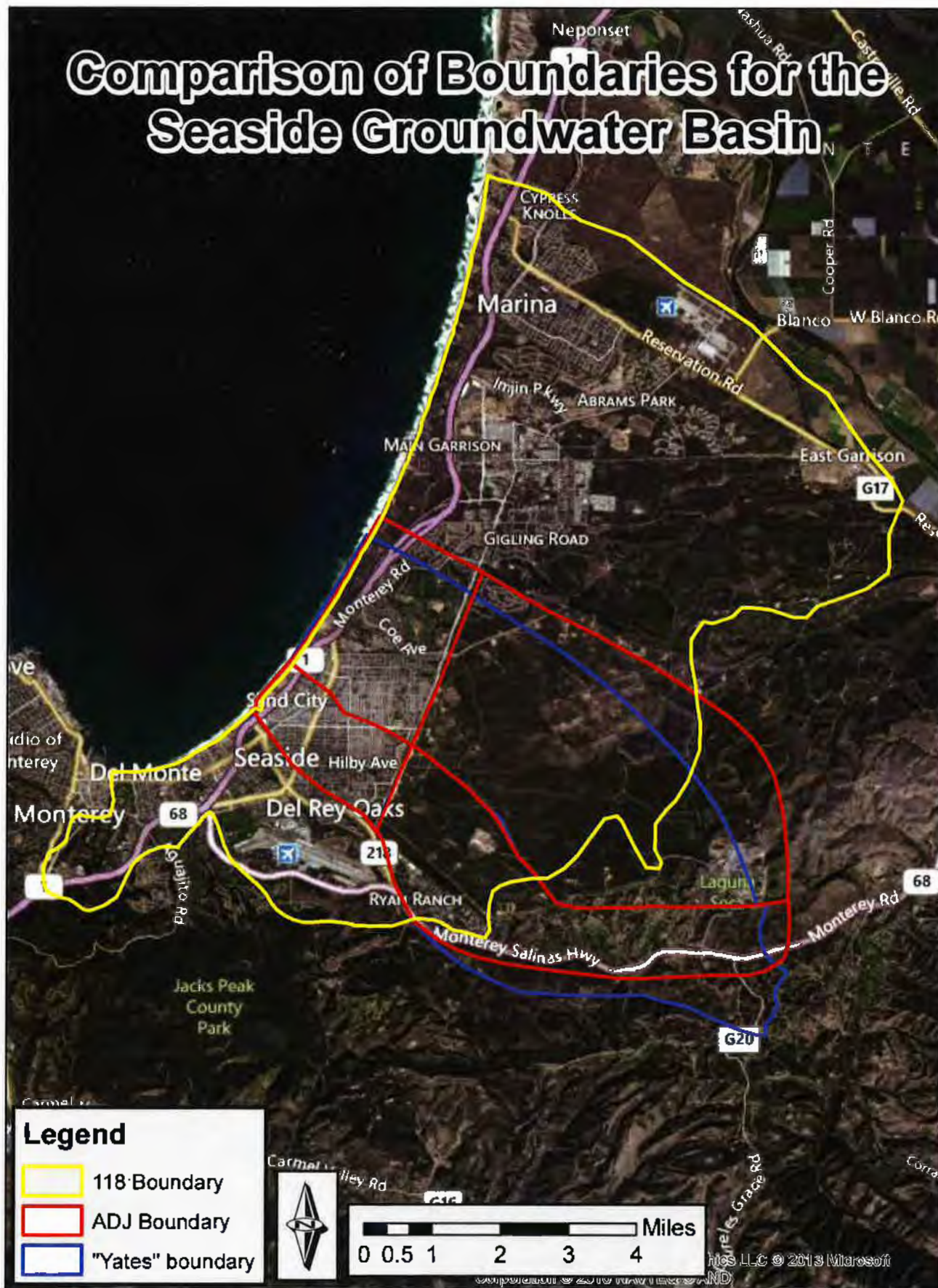


Figure 6. Basin Boundaries used in Previous Investigations

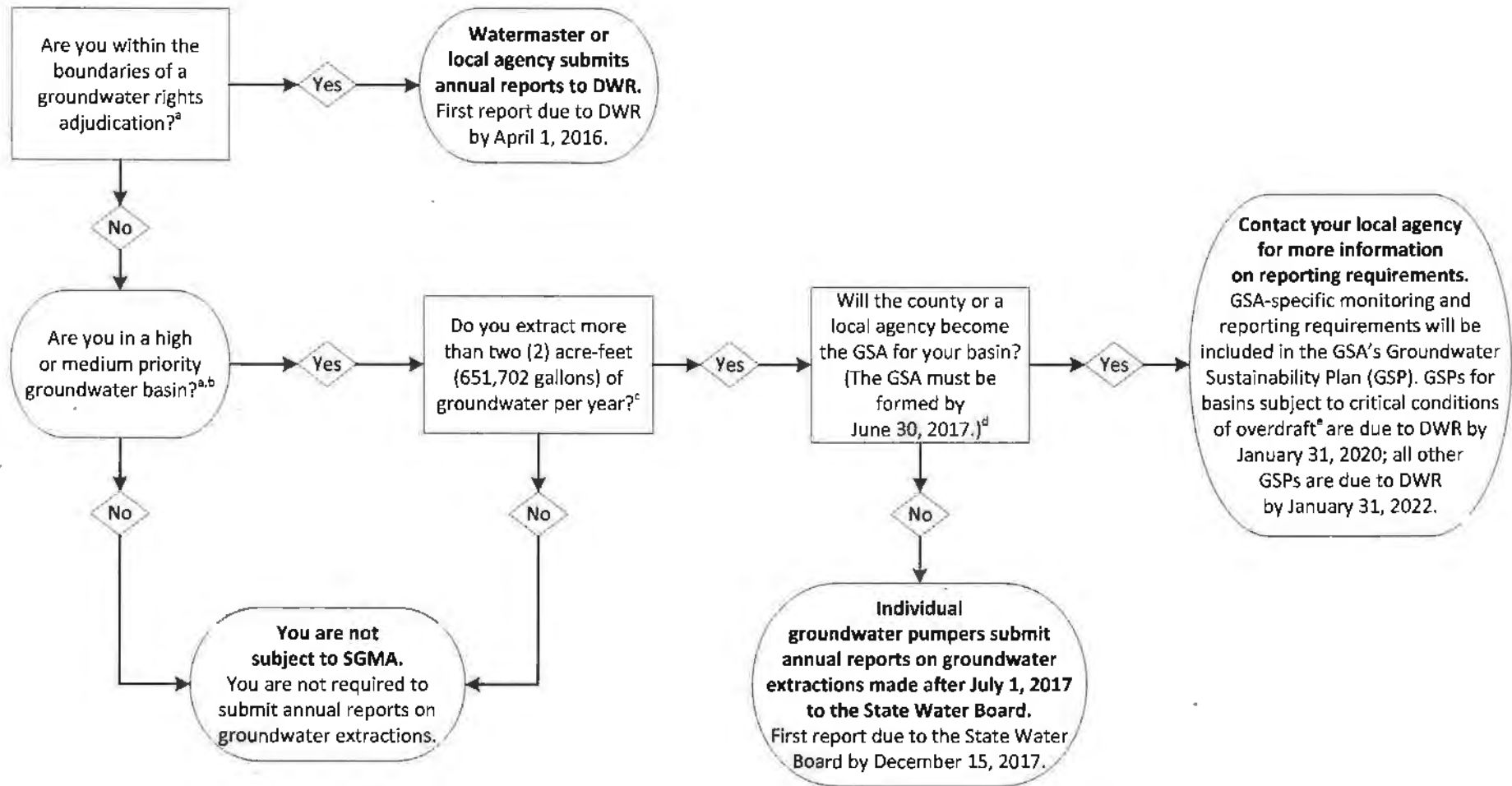
Submitted by Staff
Item 3

Comparison of Boundaries for the Seaside Groundwater Basin



Do I Submit Annual Reports on Groundwater Extractions?

The Sustainable Groundwater Management Act of 2014 (SGMA) requires certain groundwater pumpers to submit annual reports on groundwater extraction to either the State Water Resources Control Board (State Water Board) or the Department of Water Resources (DWR) (via a Groundwater Sustainability Agency [GSA] or watermaster). This flowchart is intended to provide guidance on (1) who is subject to the SGMA, (2) who is responsible for submitting reports, (3) which state agency the reports are submitted to, and (4) when the first report is due.



^a Don't know if you're in an area subject to a groundwater rights adjudication, or if you're in a high or medium priority groundwater basin? Use DWR's Groundwater Information Center Map Interface at <http://gis.water.ca.gov/app/groundwater/> to find out.

^b DWR's initial groundwater basin prioritization under the SGMA identified 43 groundwater basins or subbasins as high priority, 84 as medium priority, 27 as low priority, and the remaining 361 groundwater basins or subbasins as very low priority. The 127 basins and subbasins designated as high or medium priority include 96 percent of the state's annual groundwater use and 88 percent of the 2010 population overlying the groundwater basin area. More information on the prioritization process may be found at http://water.ca.gov/groundwater/sgm/SGM_BasinPriority.cfm.

^c An Olympic-sized swimming pool contains approximately two (2) acre-feet of water; the average person uses approximately 181 gallons of water each day (or 0.2 acre-feet per year).

^d Notifications of GSA formation submitted to DWR may be found at <http://www.water.ca.gov/groundwater/sgm/gsa.cfm>.

^e A basin is in overdraft when the amount of groundwater pumped from the basin exceeds the amount of water recharging the basin over a period of time. DWR will identify basins subject to critical conditions of overdraft in 2017 with the release of the Bulletin 118-Interim Update.

Submitted by Staff
Item 3

Establishing a Groundwater Sustainability Agency (GSA)

- A) Must first hold a public hearing after public notice once a week for two successive weeks in a newspaper of general circulation.
- B) Because MPWMD is specifically listed as one of several "exclusive local agencies within their respective statutory boundaries with powers to comply", then it may elect to become the GSA or present an alternative to DWR.
- C) The local agency shall submit a notice of intent to DWR, which must be posted on the DWR website within 15 days. Notice of intent shall include boundaries. (See attached)
- D) Must develop and maintain a list of interested parties.
- E) Within 30 days of forming, the agency shall inform DWR, with (a) service area boundaries, the basin, other GSA's, (b) a copy of the formation resolution, (c) any new bylaws, ordinances, adopted, (d) the list of interested parties.
- F) 90 days after posting, the agency shall be presumed the exclusive GSA.



San Francisco Water

Services of the San Francisco Public Utilities Commission

525 Golden Gate Avenue, 10th Floor
San Francisco, CA 94102
T 415.554.2496
F 415.934.5770

April 8, 2015

Mark Nordberg, GSA Project Manager
California Department of Water Resources
P.O. Box 942836
Sacramento, California 94236

Re: Notice of Intent to Become a Groundwater Sustainability Agency (GSA)
and to Prepare a Groundwater Sustainability Plan for the North Westside Basin

Dear Mr. Nordberg,

Pursuant to Water Code Section 10723.8, the San Francisco Public Utilities Commission (SFPUC), a municipal utility provider established as a City department under the charter of the City and County of San Francisco, hereby notifies the California Department of Water Resources (DWR) of its intent to undertake sustainable groundwater management of the seven groundwater basins that underlie the City and County of San Francisco. The SFPUC intends to manage the following groundwater basins:

- Downtown San Francisco (DWR Basin No. 2-40)
- Marina (DWR Basin No. 2-39)
- Lobos (DWR Basin No. 2-38)
- South San Francisco (DWR Basin No. 2-37)
- Westside (DWR Basin No. 2-35 – northern portion within City)
- Islais Valley (DWR Basin No. 2-33 – northern portion within City)
- Visitation Valley (DWR Basin No. 2-32 – northern portion within City)

The boundaries of the basins are as identified in Bulletin 118, Update 2003. All of the basins are classified by DWR as very low priority basins under the Sustainable Groundwater Management Act. The service area boundary encompassed by the seven basins is the SFPUC's retail water service area within the City and County of San Francisco. There are no other GSAs operating within the groundwater basins listed above.

After a March 10, 2015 public hearing held in accordance with Water Code Section 10723(b), the SFPUC adopted the attached Resolution No. 15-0070 establishing the SFPUC as the GSA for the seven groundwater basins described above. GIS shapefiles for the seven groundwater basins and their service area are provided on the enclosed CD. No new bylaws, ordinances, or other authorities were adopted in conjunction with the establishment of the GSA.

Edwin M. Lee
Mayor

Ann Moller Caen
President

Francesca Vietor
Vice President

Vince Courtney
Commissioner

Anson Moran
Commissioner

Ike Kwon
Commissioner

Harlan L. Kelly, Jr.
General Manager



In accordance with Water Code Section 10723.2, the SFPUC will consider the interests of all beneficial uses and users of groundwater within its management areas. In accordance with Water Code Section 10723.4, a list of interested parties has been established and will be maintained. Pursuant to Water Code Section 10723.8(a)(4), these parties' interests will be considered in the operation of the GSA and the development and implementation of Groundwater Sustainability Plans (GSPs) as follows:

The SFPUC and the San Francisco Department of Public Health (SFDPH) will continue to work together to protect groundwater quality in San Francisco and to enforce the Soil Boring and Well Regulations contained in Article 12B of the San Francisco Health Code. The SFPUC will work with the San Francisco Planning Department to implement wellhead protection areas through the zoning and building permitting processes.

The SFPUC will continue to work cooperatively with agencies and water providers in the southern portion of the Westside Basin, in northern San Mateo County, including the City of Daly City, the City of San Bruno, and California Water Service Company concerning groundwater projects in the Westside Basin, including the ongoing groundwater monitoring program, updates to the existing basin-wide groundwater flow model, and the Regional Groundwater Storage and Recovery Project, a conjunctive use project approved by the SFPUC in Resolution No. 14-0127 on August 12, 2014.

The composition of the GSA for the South Westside Basin has not yet been determined. Upon establishment of a GSA for the South Westside Basin, the SFPUC will enter into coordination agreements, as defined in Water Code Section 10721(d), with the individual agencies and water providers to ensure the coordinated implementation of GSPs for the entire Westside Basin. The agreements will be consistent with the Regional Groundwater Storage and Recovery Project Operating Agreement among the SFPUC, California Water Service Company, and the cities of San Bruno and Daly City.

The SFPUC will also continue to work with other groundwater pumpers in the North Westside Basin, including the San Francisco Recreation and Parks Department (SFRPD) and the San Francisco Golf Club, to ensure sustainable use and management of groundwater resources.

Representatives from the San Francisco Green Party and the Tuolumne River Trust provided comments at the March 10, 2015 public hearing and have been added to the SFPUC's list of parties who are interested in receiving notices regarding plan preparation, meeting announcements, and availability of draft plans, maps, and other relevant documents. The SFPUC will continue to engage with interested environmental stakeholders regarding the coordinated management of the Westside Basin and Lake Merced.

Representatives from the City of Daly City, City of San Bruno, California Water Service Company, SFDPH, SFRPD, California Regional Water Quality Control Board, and DWR are members of a Technical Advisory Committee that will advise the SFPUC during the preparation and implementation of the GSP for the North Westside Groundwater Basin. Representatives from San Mateo County will additionally advise the SFPUC on groundwater management issues in the Islais Valley and Visitacion Valley Groundwater Basins that straddle the San Francisco – San Mateo county boundary.

On March 10, 2015, the SFPUC approved Resolution No. 15-0071, which directed SFPUC staff to prepare a GSP for the North Westside Groundwater Basin. A copy of the resolution is attached. Public notices published prior to the March 10, 2015 public hearing provided information regarding how interested parties can participate in the development and implementation of the GSP, in accordance with Water Code Section 10727.8. In addition, the SFPUC's groundwater website (www.sfwater.org/groundwater) provides information on how to participate in the process.

Pursuant to Water Code Section 10727.8, a written statement regarding how interested parties can participate in the development and implementation of the GSP has been provided to the San Francisco Board of Supervisors.

If you require further information regarding these matters or have any questions, please contact Carolyn Cooper of my staff at 415.554.2498 or ccooper@sfwater.org.

Sincerely,



Steven R. Ritchie
Assistant General Manager, Water Enterprise

cc: Patrick Sweetland, City of Daly City
Ray Razavi, City of San Bruno
Tom Salzano, California Water Service Company

Attachments: SFPUC Resolution No. 15-0070
SFPUC Resolution No. 15-0071

Enclosure: 1 CD

PUBLIC UTILITIES COMMISSION

City and County of San Francisco

RESOLUTION NO. 15-0070

WHEREAS, On September 16, 2014, the Sustainable Groundwater Management Act was signed into law and adopted into the California Water Code, commencing with Section 10720; and

WHEREAS, The legislative intent of the Sustainable Groundwater Management Act is to provide for sustainable management of groundwater basins, to enhance local management of groundwater, to establish minimum standards for sustainable groundwater management, and to provide local groundwater agencies with the authority and the technical and financial assistance necessary to sustainably manage groundwater; and

WHEREAS, Water Code Sections 10725 and 10726 detail additional new powers and authorities granted to Groundwater Sustainability Agencies to implement sustainable groundwater management in the basins under their jurisdictions; and

WHEREAS, Water Code Section 10723(a) authorizes any local agency overlying a groundwater basin to establish itself as the Groundwater Sustainability Agency for that basin; and

WHEREAS, Water Code Section 10721(j) defines a Groundwater Sustainability Agency as one or more local agencies that implement the provisions of the Sustainable Groundwater Management Act; and

WHEREAS, The San Francisco Public Utilities Commission (SFPUC) is the local agency with exclusive water supply and water management responsibilities within the City and County of San Francisco under Charter section 8B.121; and

WHEREAS, The City and County of San Francisco overlies seven groundwater basins: the Downtown, Marina, Lobos, and South San Francisco Groundwater Basins, and the northern portions of the Westside, Islais Valley, and Visitacion Valley Groundwater Basins; and

WHEREAS, Establishing the SFPUC as a Groundwater Sustainability Agency will enable the SFPUC to prepare and implement a Groundwater Sustainability Plan for the North Westside Groundwater Basin; and

WHEREAS, The SFPUC is committed to sustainable management of its groundwater resources; and

WHEREAS, Adoption of this Resolution does not constitute a "project" under California Environmental Quality Act Guidelines Section 15378(b)(5) including organizational and administrative activities of government because there would be no direct or indirect physical change in the environment; and

WHEREAS, Prior to adopting a resolution of intent to establish the SFPUC as a Groundwater Sustainability Agency, Water Code Section 10723 requires a local agency to hold a public hearing, after publication of notice pursuant to California Government Code Section 6066, on whether or not to adopt a resolution to establish a Groundwater Sustainability Agency; and

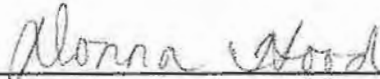
WHEREAS, Pursuant to Government Code Section 6066, notices of a public hearing on whether or not to adopt a resolution to establish a Groundwater Sustainability Agency were published on February 23, 2015 and March 2, 2015; and

WHEREAS, On March 10, 2015, this Commission held a public hearing regarding adoption of a resolution to establish the SFPUC as the Groundwater Sustainability Agency for the Downtown, Marina, Lobos, and South San Francisco Groundwater Basins in San Francisco, and the northern portions of the Westside, Islais Valley, and Visitacion Valley Groundwater Basins in San Francisco; now, therefore, be it

RESOLVED, That this Commission establishes the SFPUC as the Groundwater Sustainability Agency for the Downtown, Marina, Lobos, and South San Francisco Groundwater Basins in San Francisco, as well as the northern portions of the Westside, Islais Valley, and Visitacion Valley Groundwater Basins in San Francisco; and be it

FURTHER RESOLVED, That this Commission authorizes the General Manager or his designee to provide a copy of this resolution to the California Department of Water Resources within 30 days and to otherwise comply with the requirements of Water Code Section 10723.8(a).

I hereby certify that the foregoing resolution was adopted by the Public Utilities Commission at its meeting of March 10, 2015.



Secretary, Public Utilities Commission

PUBLIC UTILITIES COMMISSION

City and County of San Francisco

RESOLUTION NO. 15-0071

WHEREAS, On January 14, 2014, the San Francisco Public Utilities Commission adopted Resolution No. 14-0010 approving the San Francisco Groundwater Supply Project, which contemplates the sustainable operation of the North Westside Groundwater Basin in San Francisco for domestic and municipal purposes; and

WHEREAS, On January 28, 2014, the San Francisco Public Utilities Commission adopted Resolution No. 14-0026, directing staff to prepare a Groundwater Management Plan (GMP) for the North Westside Basin in accordance with California Water Code Sections 10750 *et seq.*; and

WHEREAS, on September 16, 2014, the Sustainable Groundwater Management Act was signed into law and adopted into the California Water Code, commencing with Section 10720; and

WHEREAS, Water Code Section 10720.7(b) encourages and authorizes basins designated by DWR as low and very low priority, such as the North Westside Basin, to be managed under Groundwater Sustainability Plans (GSPs); and

WHEREAS, California Water Code Section 10727 outlines the requirements for preparation of GSPs, which are inclusive of the requirements for GMPs in Water Code Section 10750 *et seq.*, and contain additional requirements regarding measurable objectives and interim milestones to achieve sustainability goals for the basin; and

WHEREAS, the GSP for the North Westside Basin will encompass and supersede the GMP for the North Westside Basin that SFPUC staff started in 2014; and

WHEREAS, The preparation and adoption of GSPs is exempt from environmental review under California Water Code § 10728.6. Once a Groundwater Sustainability Plan has been prepared and adopted by this Commission, approval of projects to implement the GSP would be subject to compliance with the California Environmental Quality Act (CEQA). A Final EIR for Project Number CUW30103 Regional Groundwater Storage and Recovery Project was certified by the San Francisco Planning Commission on August 7, 2014. This Commission approved Project No. CUW30103 and adopted CEQA findings on August 12, 2014 under Resolution No. 14-0127; and

WHEREAS, although the Westside Basin has been designated by DWR as a single basin, it has been divided administratively on the San Francisco County/San Mateo County border;

WHEREAS, Water Code Section 10727.6 requires coordination with other agencies within a groundwater basin to ensure that plans utilize the same data and methodologies; and

WHEREAS, SFPUC will enter into coordination agreements with the agencies in the South Westside Basin, including the City of Daly City, California Water Service Company of California, and the City of San Bruno (Partner Agencies), to ensure the coordinated

implementation of the GSPs for the entire Westside Basin, consistent with the Regional Groundwater Storage and Recovery Project Operating Agreement approved by the Commission in Resolution No. 14-0127 adopted August 12, 2014; and

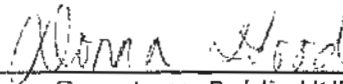
WHEREAS, SFPUC will also coordinate with other groundwater pumpers in the North Westside Basin, including the San Francisco Recreation and Parks Department and the San Francisco Golf Club; and

WHEREAS, on March 10, 2015, this Commission passed a resolution affirming SFPUC's commitment to sustainable management of its groundwater resources and establishing the SFPUC as the Groundwater Sustainability Agency for all seven groundwater basins underlying the City and County of San Francisco, including the North Westside Basin; now, therefore, be it

RESOLVED, that this Commission intends to draft a Groundwater Sustainability Plan for the North Westside Basin; and be it

FURTHER RESOLVED, that this Commission directs staff to prepare a Groundwater Sustainability Plan for the North Westside Basin in accordance with California Water Code Sections 10720 *et seq* and to return to this Commission for consideration of adoption of the plan.

I hereby certify that the foregoing resolution was adopted by the Public Utilities Commission at its meeting of March 10, 2015.



Secretary, Public Utilities Commission



GSA Notifications

Where Do I Submit My GSA Notification?

Please email your GSA notification and shape file, and send via postal mail a hardcopy, to the following DWR staff:

- Mark Nordberg, GSA Project Manager**
 Senior Engineering Geologist
 California Department of Water Resources
 901 P Street, Room 213A
 P.O. Box 942835
 Sacramento, CA 94299
Mark.Nordberg@water.ca.gov

- DWR Region Office Groundwater Contact**
 - If your GSA covers more than one DWR region, please send your GSA notification to staff in both region offices.

Groundwater Sustainability Agency Notifications Received by DWR

Show entries

Search:

Name of Local Agency	Basin/Subbasin Name	Basin/Subbasin Number	County(s) the Basin is Located	Date of GSA Notification Posting
County of Colusa	Colusa	5-21.52	Colusa	07/22/2015
County of Colusa	West Butte	5-21.58	Colusa	07/22/2015
County of Colusa	Stonyford Town Area	5-63	Colusa	07/22/2015
County of Colusa	Bear Valley	5-64	Colusa	07/22/2015
County of Colusa	Little Indian Valley	5-65	Colusa	07/22/2015
County of Colusa	Funks Creek	5-90	Colusa	07/22/2015
County of Colusa	Antelope Creek	5-91	Colusa	07/22/2015
County of Colusa	Blanchard Valley	5-92	Colusa	07/22/2015
County of Glenn	Goning	5-21.51	Glenn	07/09/2015
County of Glenn	Colusa	5-21.52	Glenn	07/09/2015

Name of Local Agency	Basin/Subbasin Name	Basin/Subbasin Number	County(s) the Basin is Located	Date of GSA Notification Posting
----------------------	---------------------	-----------------------	--------------------------------	----------------------------------

Showing 1 to 10 of 36 entries

Previous 1 2 3 4 Next

GROUNDWATER HOME

SUSTAINABLE GROUNDWATER MANAGEMENT

- Basin Boundary Regulations
- Public Listening Sessions
- Public Comments

Groundwater Sustainability Agencies

- GSA Notifications Table
- GSA Interactive Map
- GSA Notification Revisions and Opt Out Notices

Groundwater Sustainability Plan Regulations

- Initial Basin Prioritization
- Communication and Outreach Advisory Groups

- Statewide SGMA Calendar
- Region Office Contacts
- Subscribe for Email Updates

Resources

- Facilitation Support Services
- SGMA Definitions
- Water Mgmt. Planning Tool
- Related Links

GROUNDWATER INFORMATION CENTER

- CASGEM
- BULLETIN 118

