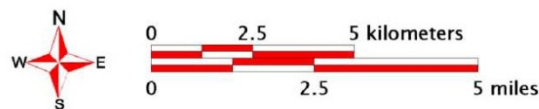
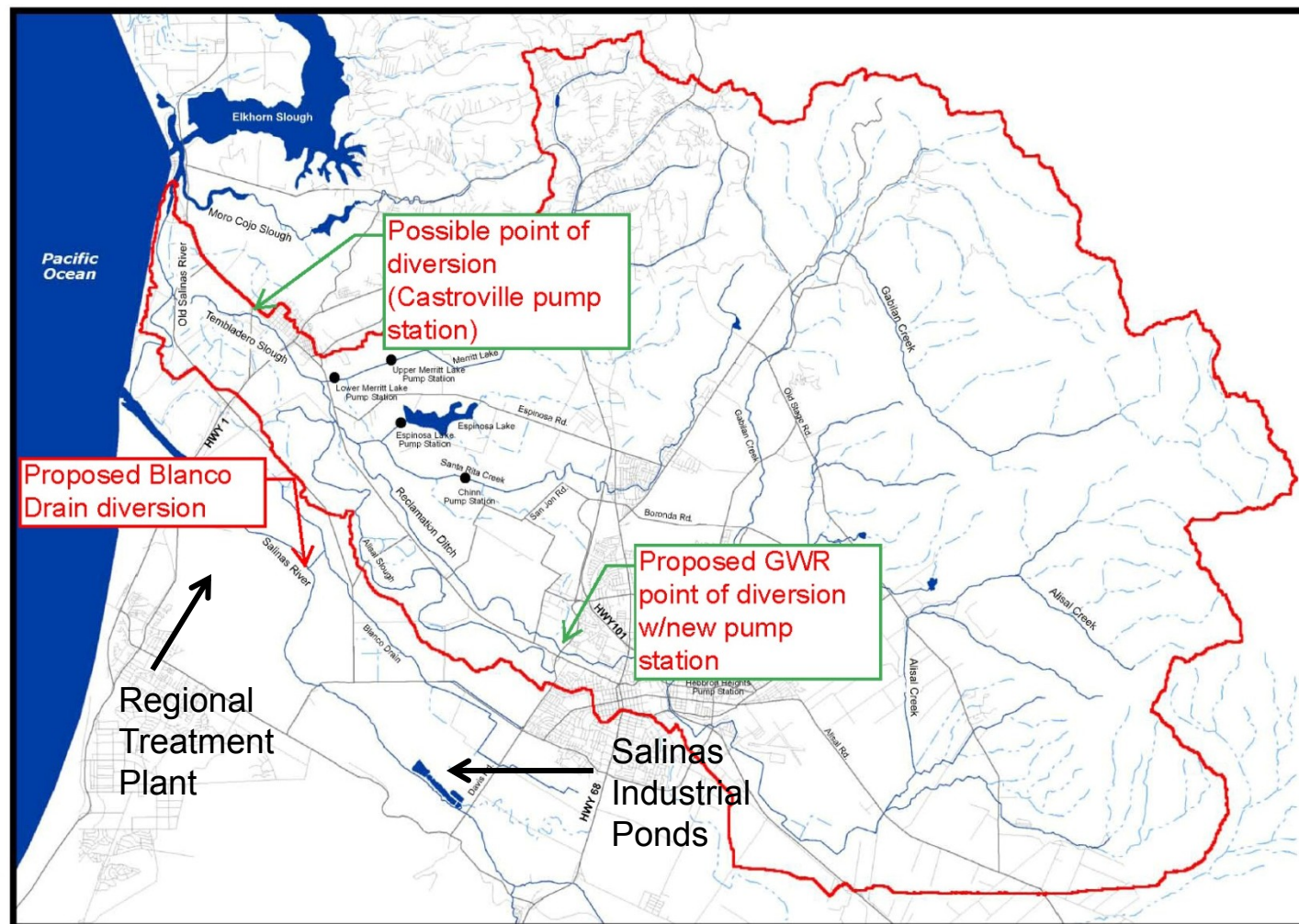


Reclamation Ditch watershed



- 157 square-mile watershed
 - Rec Ditch drains urban runoff from City of Salinas, surrounding foothills and ag lands (through tile drains)
 - empties into Tembladero Slough and then to Moss Landing
- Does not contribute directly into Salinas River
- Listed as an impaired water for ammonia, fecal coliform, pesticides, nitrate, toxicity and other parameters
- Drainage canal built between 1917 and 1920 through sloughs

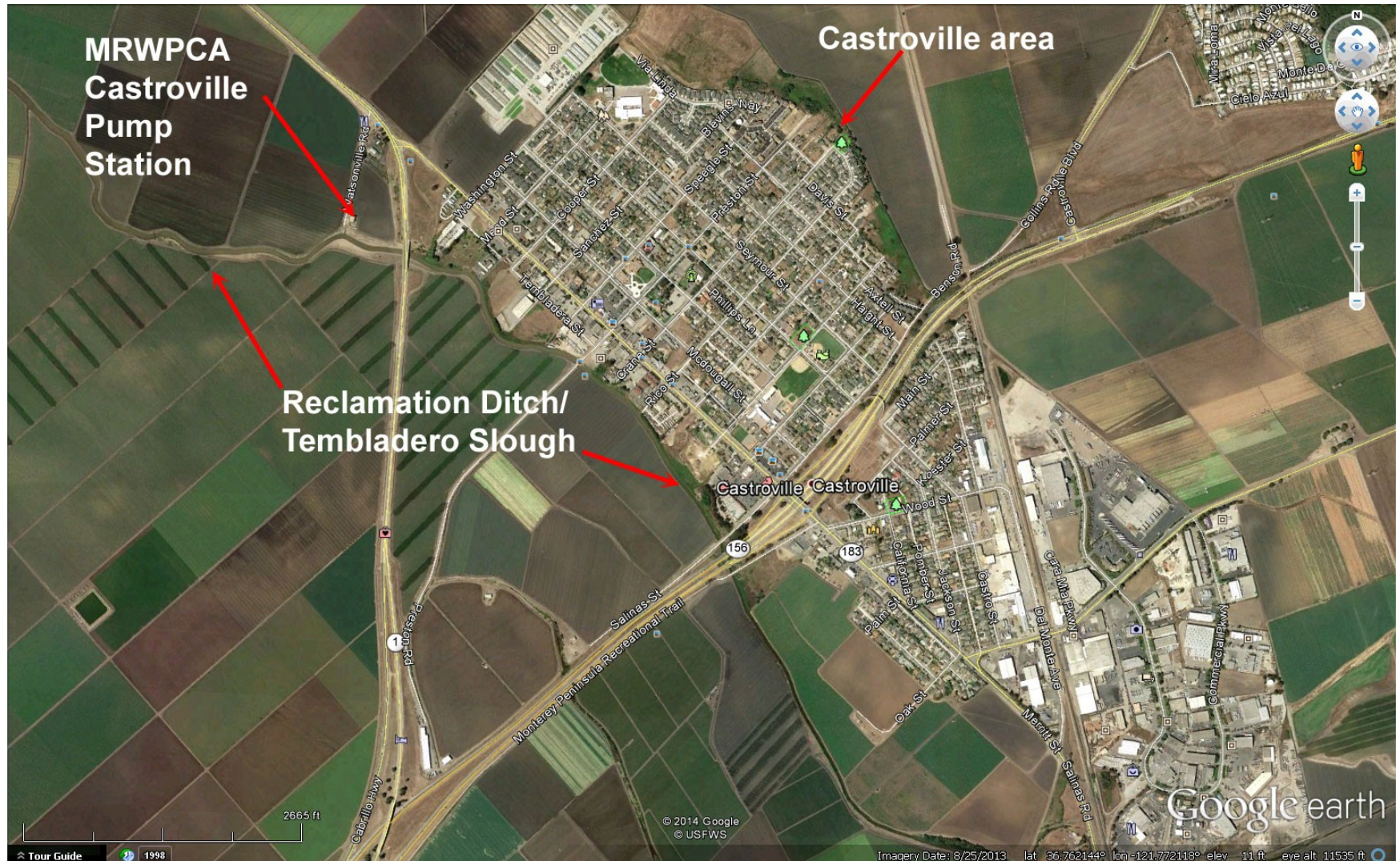
Proposed Diversion Points



Map produced: Joel Casagrande & Fred Watson
 Streams: USGS NHD dataset
 Roads: Monterey County
 (c) CCoWS, 2004



Castroville Diversion



Reclamation Ditch Davis Road Diversion



Reclamation Ditch Davis Road Diversion



Reclamation Ditch, Monterey County
Looking downstream at Hwy 183/Market St.
(proposed point of diversion)

- Build 3 cfs diversion and pump station at Davis Road
- Pump to a gravity portion of existing sewer line



Reclamation Ditch
in City of Salinas

BLANCO DRAIN DIVERSION



The Blanco Drain

Blanco Drain



- Man-made ditch that drains 6,400-acre drainage
- 97% of area is in ag land use
- Runoff is from tile drains and some stormwater
- System is maintained by MCWRA
- Drains to Salinas River near rubber dam (SRDF)
- Listed as impaired water for pesticides, nitrates, chloride and other parameters

