

**EXHIBIT 3-A**

September 11, 2025

Mr. David Stoldt  
General Manager  
Monterey Peninsula Water Management District  
5 Harris Court, Building G  
Monterey, CA 93940

RECEIVED

SEP 15 2025

MPWMD

Dear Mr. Stoldt,

Rosie's Garden Advisory Committee respectfully requests your support for a project that holds significant value within our community: the refurbishment of Rosie's Garden.

We are seeking a \$8,000 to \$10,000 grant to fund essential irrigation improvements and educational signage as part of the garden's renovation. Established in 2000 by Robles Del Rio residents, Rosie's Garden transformed the northwest corner of Esquiline and De Los Helechos—previously a dirt lot damaged by the 1995 floods—into a vibrant green space cherished by the neighborhood. The garden is dedicated to the memory of Rosie, proprietor of Rosie's Cracker Barrel for 44 years. The garden is adjacent to the historical Cracker Barrel building, now home to Carmel Valley Creamery, which was recently featured in The New York Times as a recommended destination in Carmel Valley. The garden serves as the welcoming gateway to the Robles Del Rio neighborhood, home to approximately 310 households.

Originally, native drought- and deer-resistant species were planted and maintained by volunteers from both the Robles Community and the CV Garden Club. Over the past 25 years, however, plant vitality has declined, and the irrigation infrastructure has deteriorated, prompting the formation of the Rosie's Garden Advisory Committee. Our committee is responsible for developing a new garden design (Exhibit 1), selecting suitable plant species (Exhibit 2) and features, coordinating volunteer efforts for planting and ongoing maintenance, and securing necessary funds for supplies and operations.

Educational signage is a key component of the revitalized garden, aiming to inform visitors about native, drought-tolerant, deer-resistant, and pollinator-friendly plants, as well as water conservation strategies. Planned signage includes:

- Identification signage indicating the garden's name, a general description, and recognition of major sponsors. (Example picture 1)
- Storybook signage provides narratives about plant species, watershed information, and other relevant facts. (Example picture 2)
- Plant-specific signage detailing both common and scientific names, environmental benefits, and water usage. (Example picture 3)

Installation of a new irrigation system is critical to the garden's success. After consultation with Conservation Representative Kyle Smith, we identified the need for a four-zone system, as delineated in Exhibit 1. Planned components include a four-valve battery-powered controller, filtration system, drip irrigation lines, and emitters. The required Landscape Documentation Package Submittal Form is currently being prepared, with target for planting in November 2025.

To date, we have secured considerable funding for these efforts, including a \$3,000 grant from Cal Am, \$500 from Carmel Valley Kiwanis, and \$3,500 in private donations. Professional landscapers will handle the garden installation at an estimate cost of \$5,500 (excluding irrigation) with irrigation costs anticipated between \$900 and \$1,500. Signage costs have not been determined and will be determined by the availability of funds. Rosie's Garden is fiscally sponsored by the Carmel Valley Garden Club, a registered nonprofit organization (501(c)(3), (Tax Exempt #65-1260835), any grants awarded from MPWMD will be managed through our Garden Club account. The Advisory Committee is actively fundraising to cover startup expenses and establish an operating fund for water, maintenance and volunteer activities.

We look forward to collaborating with MPWMD to develop impactful educational signage and a reliable irrigation system and would welcome opportunities for partnership activities highlighting this collaboration. For additional information, please contact me at [sherie@roiassistance.com](mailto:sherie@roiassistance.com) or 650-888-2610.

Thank you for your consideration of our request.

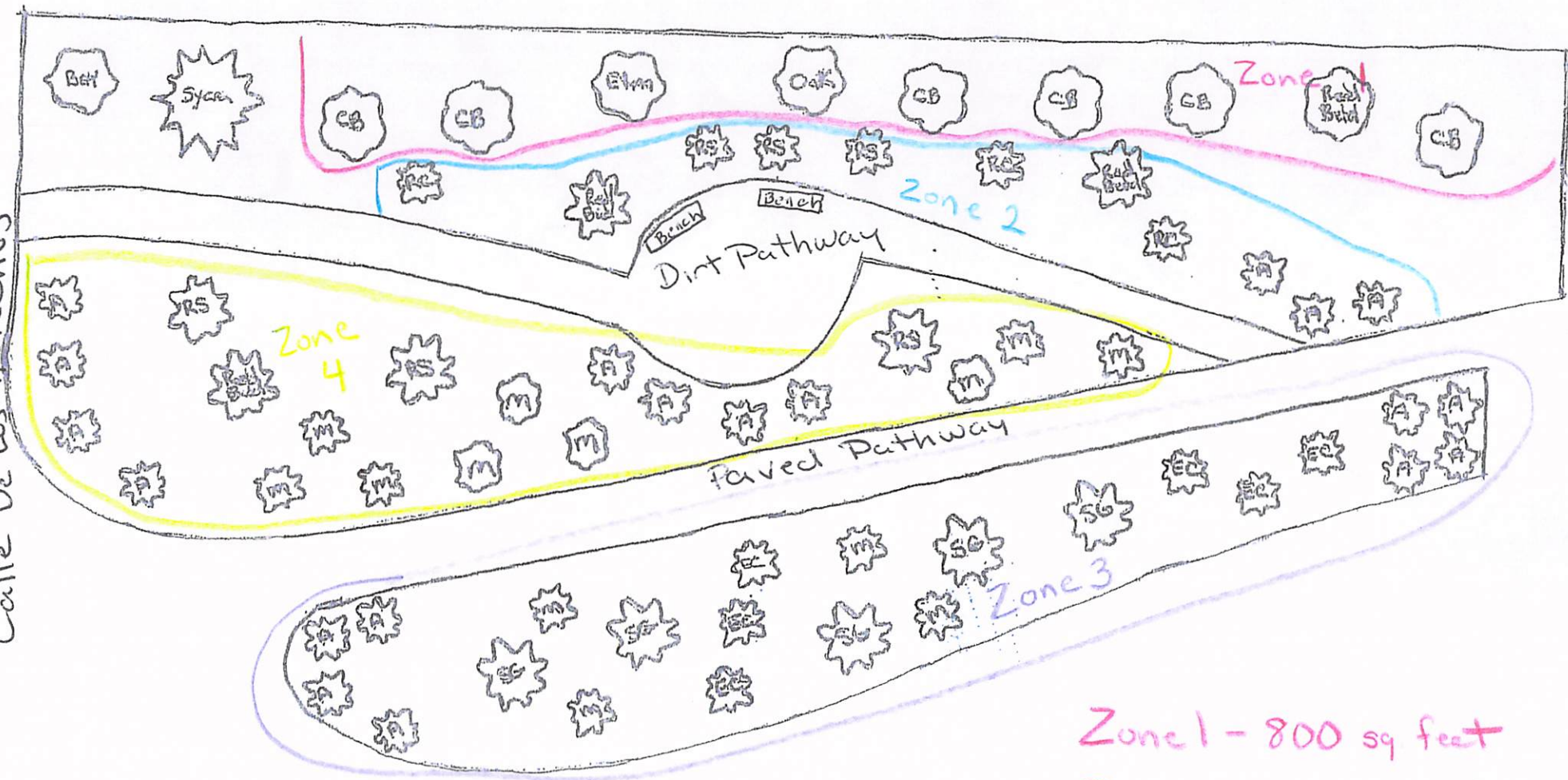
Sincerely,

A handwritten signature in black ink, appearing to read "Sherie".

Sherie Dodsworth  
Chair, Rosie's Garden Advisory Committee

Calle De los Herreños

Carnel River



Esquiline Road

- Zone 1 - 800 sq feet
- Zone 2 - 700 sq feet
- Zone 3 - 700 sq feet
- Zone 4 - 1100 sq feet



Symbol	Plant	Quantity	Size
A	Arctostaphylos – green carpet	19	1 gal
CB	Rhamnus californica – coffeeberry	6	5 gal
EC	Epilobium Canum – CA fuchsia	6	1 gal
M	Mimulus – “vibrant red”	13	1 gal
RC	Ribes californicum - gooseberry	3	5 gal
RS	Ribes sanguineum – red current	6	5 gal
Redbud	Western Redbud	4	5 gal
SG	Salvia Greggii – “red” existing	5	existing
	<b>Total Plants</b>	<b>62</b>	
Bay	Bay Tree	1	existing
Syca	Sycamore Tree	1	existing
Elm	Elm Tree	1	existing
Oak	Oak Tree	1	existing

Plant Factor

0.10

0.10

0.20

0.10

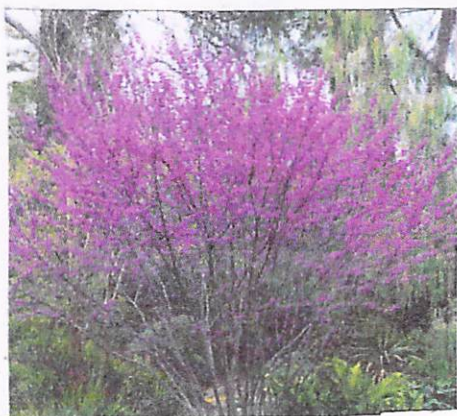
0.10

0.20

0.20



# Rosie's Garden Proposed Plants (may 2025)



Redbud – Western Redbud

4 -5g



RC – Ribes californicum – gooseberry 6 -1g

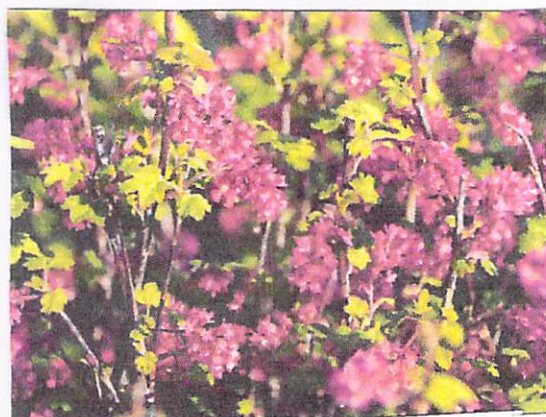


M – Mimulus – 'vibrant Red'

13 – 1g



EC – Epilobium canum – CA fuchsia 3 – 5g

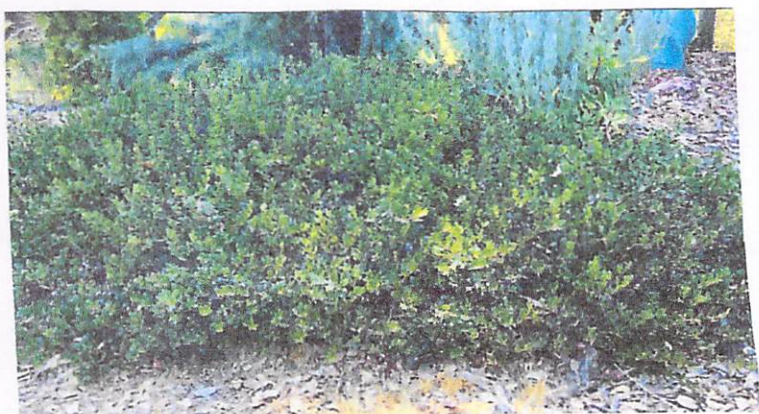


RS – Ribes sanguineum – red currant

8 -5g



SG – Salvia Greggii – 'Red' - existing



A – Arctostaphylos – green carpet

19 – 1g



CB – Rhamnus californica – coffeeberry 6 -5g





This signage is located across the street from mid-valley Safeway

Example picture 1





This is located at the entrance to Carmel River, from the Little League Park.  
 Content for our signage would be a collaboration with MPWMD

Example picture 2





Example Picture 3