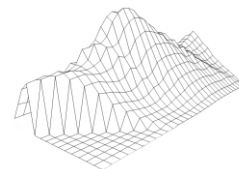


Post-2020 Census Redistricting: Recommendation from your Redistricting Advisory Commission (RAC)

MONTEREY PENINSULA WATER MANAGEMENT DISTRICT

APRIL 1, 2022



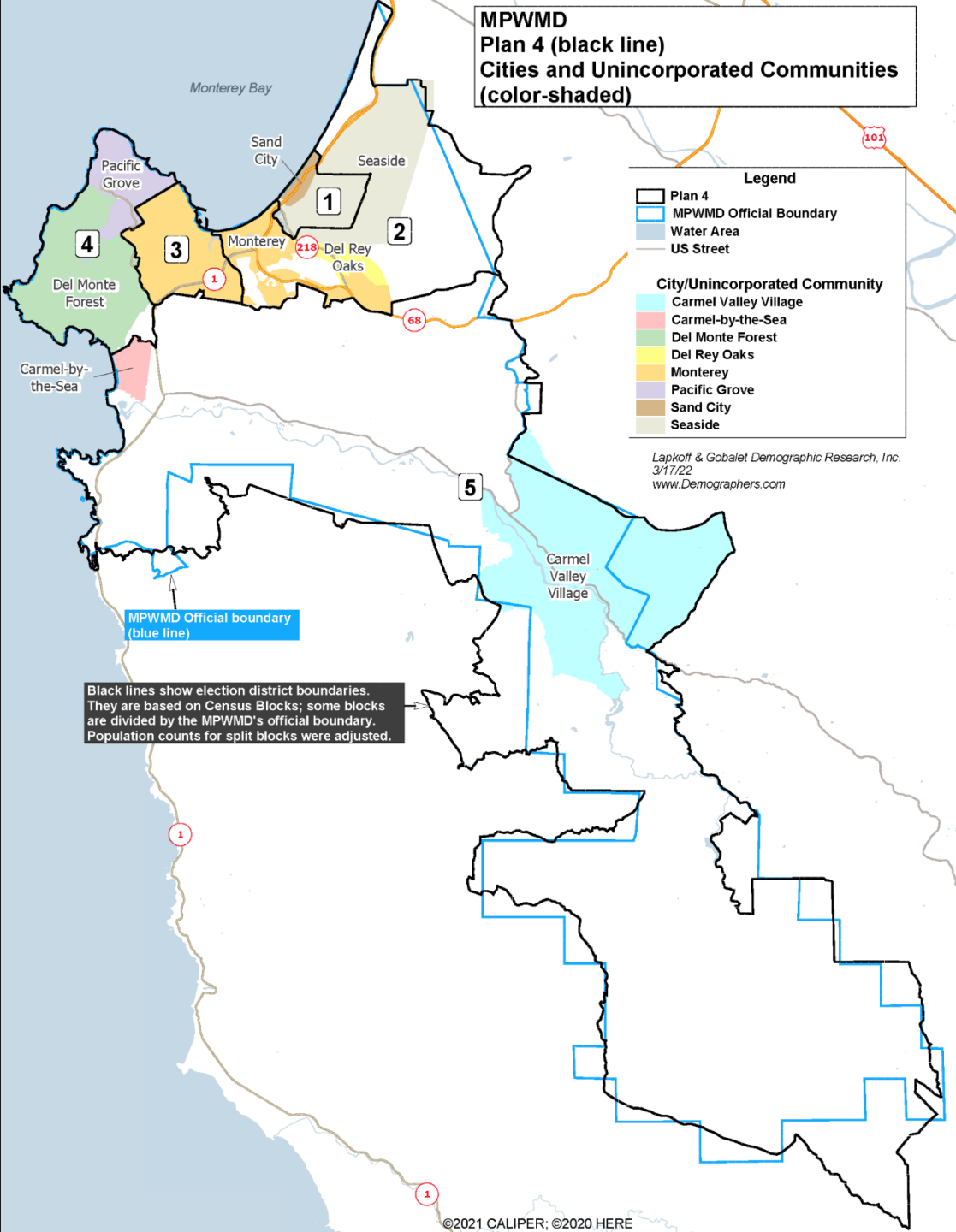
Shelley Lapkoff, Ph.D. & Jeanne Gobalet, Ph.D.
LAPKOFF & GOBALET DEMOGRAPHIC RESEARCH, INC.

www.demographers.com

Oakland and Saratoga, California

Topics Covered at March 21 Public Hearing

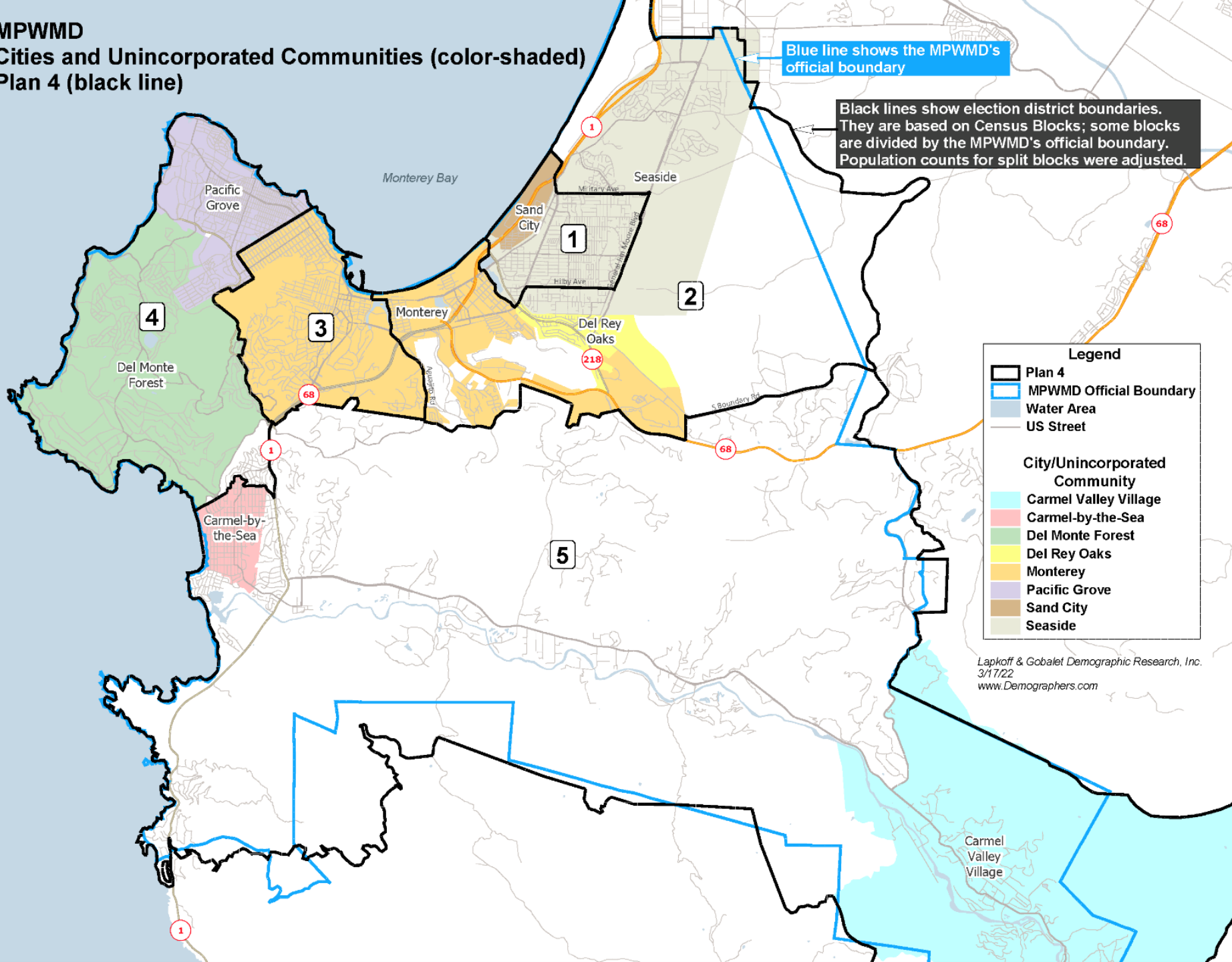
- The need to redistrict
- Legal requirements when redistricting
- Redistricting Advisory Commission (RAC) process, including factors they explored and considered
- RAC Recommended Plan
 - Strong Latinx/Black district
 - Continued use of city boundaries when possible
 - Population-balanced districts



Plan recommended by RAC: overview map

Cities/Unincorporated Communities color-shaded

**MPWMD
 Cities and Unincorporated Communities (color-shaded)
 Plan 4 (black line)**



**Plan recommended by
 RAC: northern detail**

MPWMD Plan 4

Non-Hispanic

District	Total Population	Latino/ Hispanic	White	Black	Asian	Other	Total
Total Population Percentages							
1	21,398	56%	21%	7%	10%	5%	100%
2	22,125	28%	52%	4%	11%	6%	100%
3	21,161	15%	66%	4%	10%	4%	100%
4	20,488	12%	72%	2%	10%	4%	100%
5	20,739	9%	81%	1%	6%	4%	100%
Total	105,911	24%	58%	4%	9%	5%	100%

Age 18+ (Voting Age) Population Percentages

1	16,451	50%	25%	8%	11%	5%	100%
2	17,661	25%	55%	4%	11%	5%	100%
3	18,676	14%	68%	4%	10%	4%	100%
4	16,981	10%	76%	2%	8%	4%	100%
5	17,768	7%	83%	1%	6%	3%	100%
Total	87,537	21%	62%	4%	9%	4%	100%

Citizens of Voting Age (CVAP) Percentages

1	12,957	30%	34%	13%	14%	9%	100%
2	15,522	18%	62%	5%	9%	6%	100%
3	16,306	10%	72%	4%	8%	6%	100%
4	16,533	8%	79%	2%	6%	5%	100%
5	17,511	6%	86%	0%	4%	4%	100%
Total	78,829	13%	68%	4%	8%	6%	100%

MPWMD Plan 4

Non-Hispanic

District	Total Population	Latino/ Hispanic	White	Black	Asian	Other
Registered Voters						
1	10,408	31%	n/a	n/a	8%	n/a
2	11,968	16%	n/a	n/a	6%	n/a
3	11,311	9%	n/a	n/a	6%	n/a
4	15,112	7%	n/a	n/a	4%	n/a
5	16,541	5%	n/a	n/a	4%	n/a
Total	65,340	12%	n/a	n/a	5%	n/a

Actual Voters

1	8,184	29%	n/a	n/a	8%	n/a
2	10,139	15%	n/a	n/a	6%	n/a
3	9,775	9%	n/a	n/a	5%	n/a
4	13,509	6%	n/a	n/a	4%	n/a
5	14,903	5%	n/a	n/a	4%	n/a
Total	56,510	11%	n/a	n/a	5%	n/a

District Total Pop Deviation % Deviation

1	21,398	216	1.0%
2	22,125	943	4.5%
3	21,161	-21	-0.1%
4	20,488	-694	-3.3%
5	20,739	-443	-2.1%
Total	105,911		
Ideal	21,182	1,637	7.7%

Questions/Board Discussion
