

121°50' W

121°40' W

121°30' W

36°40' N

36°30' N

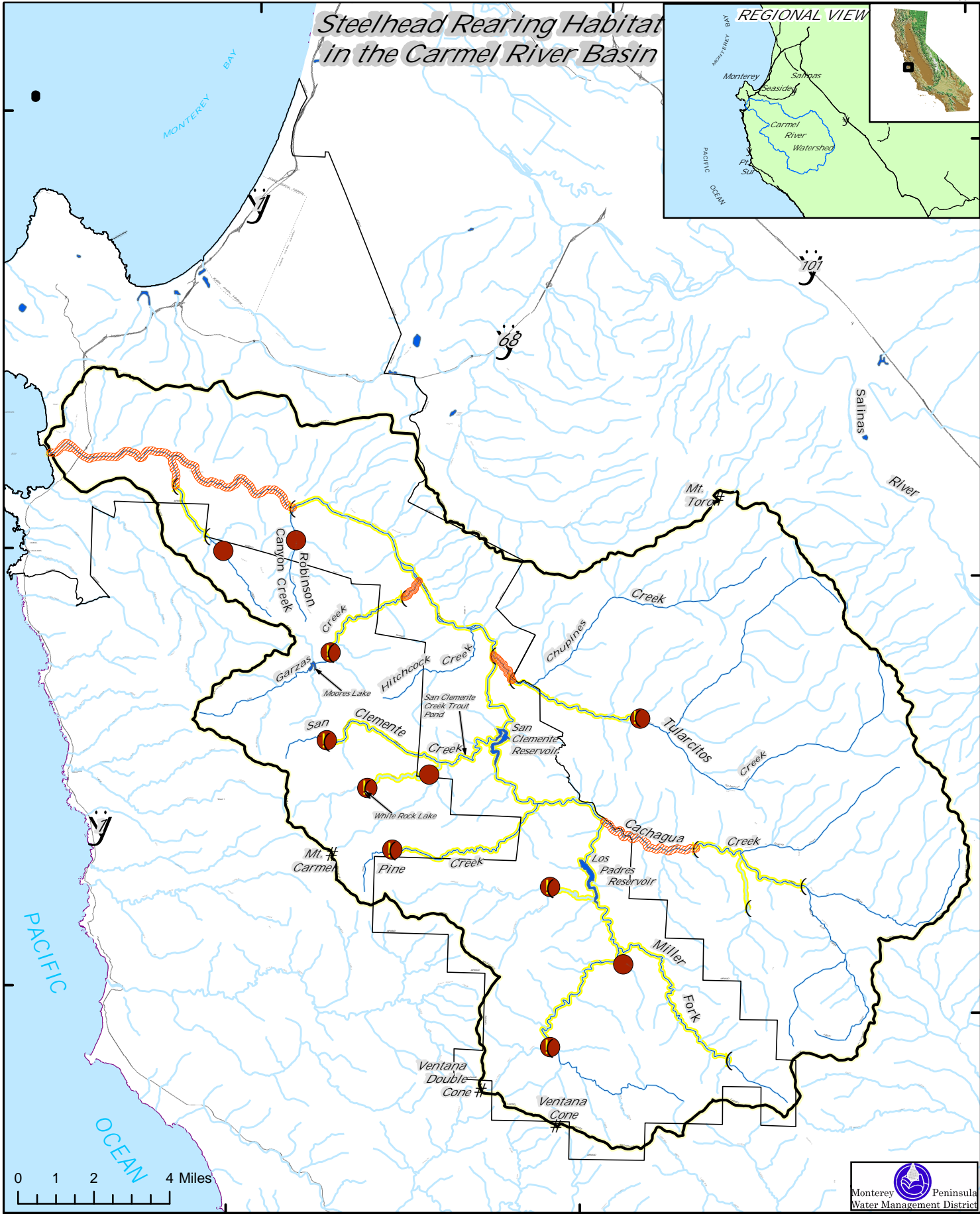
36°20' N

36°40' N

36°30' N

36°20' N

Steelhead Rearing Habitat in the Carmel River Basin



LEGEND

#	Peaks	●	Steelhead Habitat Barrier	—	MPWMD Boundary
(Rearing Habitat extent	—	Streams & Rivers	⊂	Carmel River Watershed
		—	Perennial Rearing Habitat	▨	Seasonal Rearing Habitat