



INCA

Landscape Management

P.O. Box 3281, Carmel-by-the Sea, CA 93921

EXHIBIT 3-A

Carmel, Ca. Monday, April 4, 2016

From: Mario E. Callau dba INCA Landscape Management

To: MPWMD

Ref: Proposal for Redwood vegetable boxes

- . Design 2 Redwood planter boxes 40" wide by 80" long by 22" high each by using surfaced grade Redwood lumber, see design.
- . Clear and prepare the area where the two planter boxes will be installed.
- . Build and install the two planters
- . Line the bottom of the planters with heavy gauge ½" hardware cloth to keep gophers out.
- . Fill with approximately 3 cu. yds. enriched organic top soil

Total labor and material is estimated to be \$ 2,495

The project has received no objections from the property owners.

As a courtesy to MPWMD, I am not charging for my time designing and project management (approximately \$ 500)

Thank you,

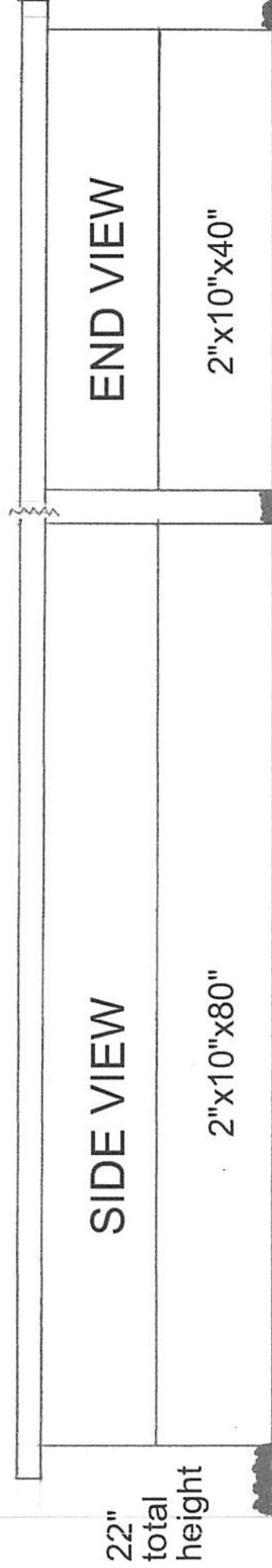
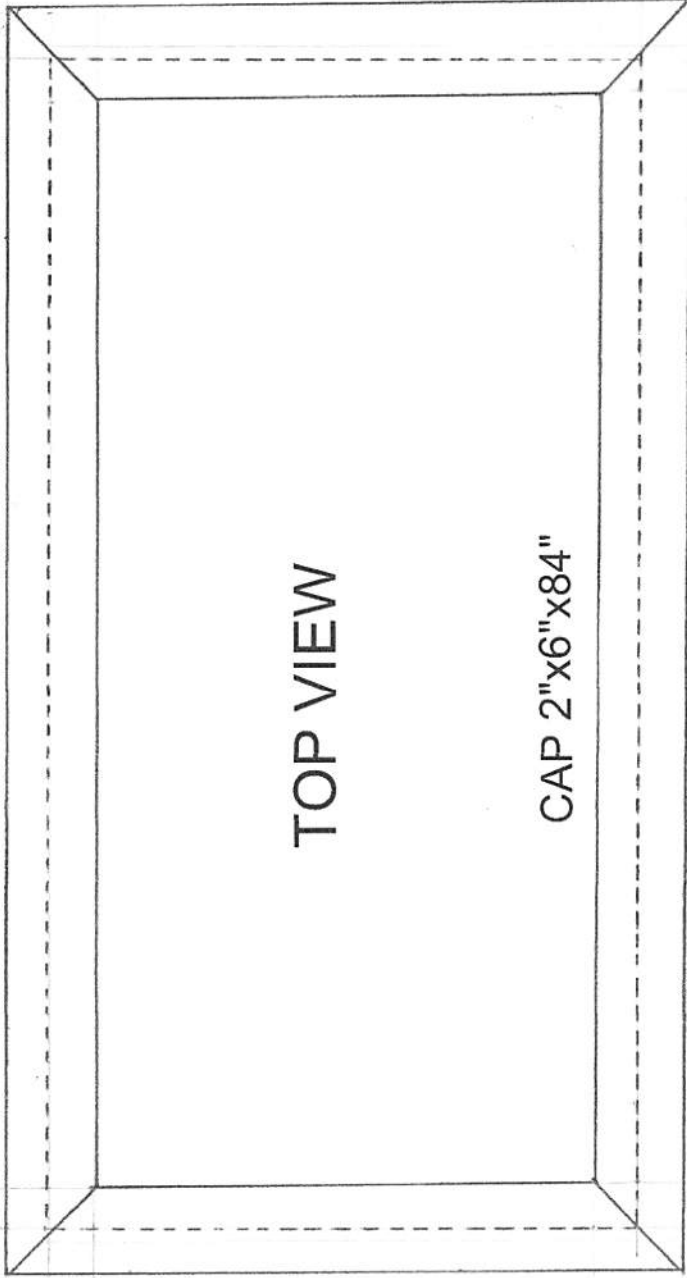
Mario E. Callau

Mario E. Callau
Ornamental Horticulturist, A.S.
Certified Landscape Designer
C-27 Landscape Contractor, Lic. # 875311
Office Voicemail (831) 625-0900
Office Fax (831) 649-1099
Cell (831) 320-4420
Landscaping Since 1978

MPWMD Redwood planter boxes

| | | | |
|----------------|---------------|----------------|----------------|
| Labor: | hours | | |
| Prepare site | 6 | | |
| Build planters | 16 | | |
| Line and fill | 6 | | |
| Total | 28 hrs | \$45/hr | \$1,260 |
| 3 cu yds soil | | \$109 | \$327 |
| delivery | | | \$65 |
| Hardware cloth | | | \$64 |
| Hardware | | | \$25 |
| 4x4x10 post | | | \$186 |
| post cement | | | \$110 |
| 2x6x8 S4S | 6 | | \$107 |
| 2x10x8' | 16 | | \$351 |
| | | | \$2,495 |

Two Redwood
vegetable planters
40" wide
80" long
22" high



| | | | |
|---------------------------|---------|---------------------------|----------------------|
| Revision #: | Scale: | Landscape Plan: | Landscape Design by: |
| Date: 4/2/2016 | 1" = 1' | MPWMD rwd vegetable boxes | Mario E. Callau |
| INCA Landscape Management | | | |



Request for Bid: Monterey Peninsula Water Management District Raised Garden Beds

Project Description:

- 1) Construction and installation of 2 raised garden beds: 8 ft long by 4 ft wide
 - 2) Design and install a drip irrigation system that would run off our on-site 800 gallon cistern.
- The planter area and the cistern are divided by a 2.5 ft concrete pathway that cannot be altered.

Design:

See photo below however we would want the posts to be on the inside of the frame rather than the outside.



See page two for image of the install Location:

