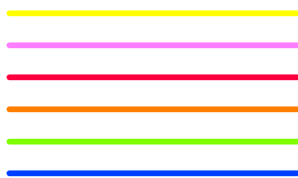
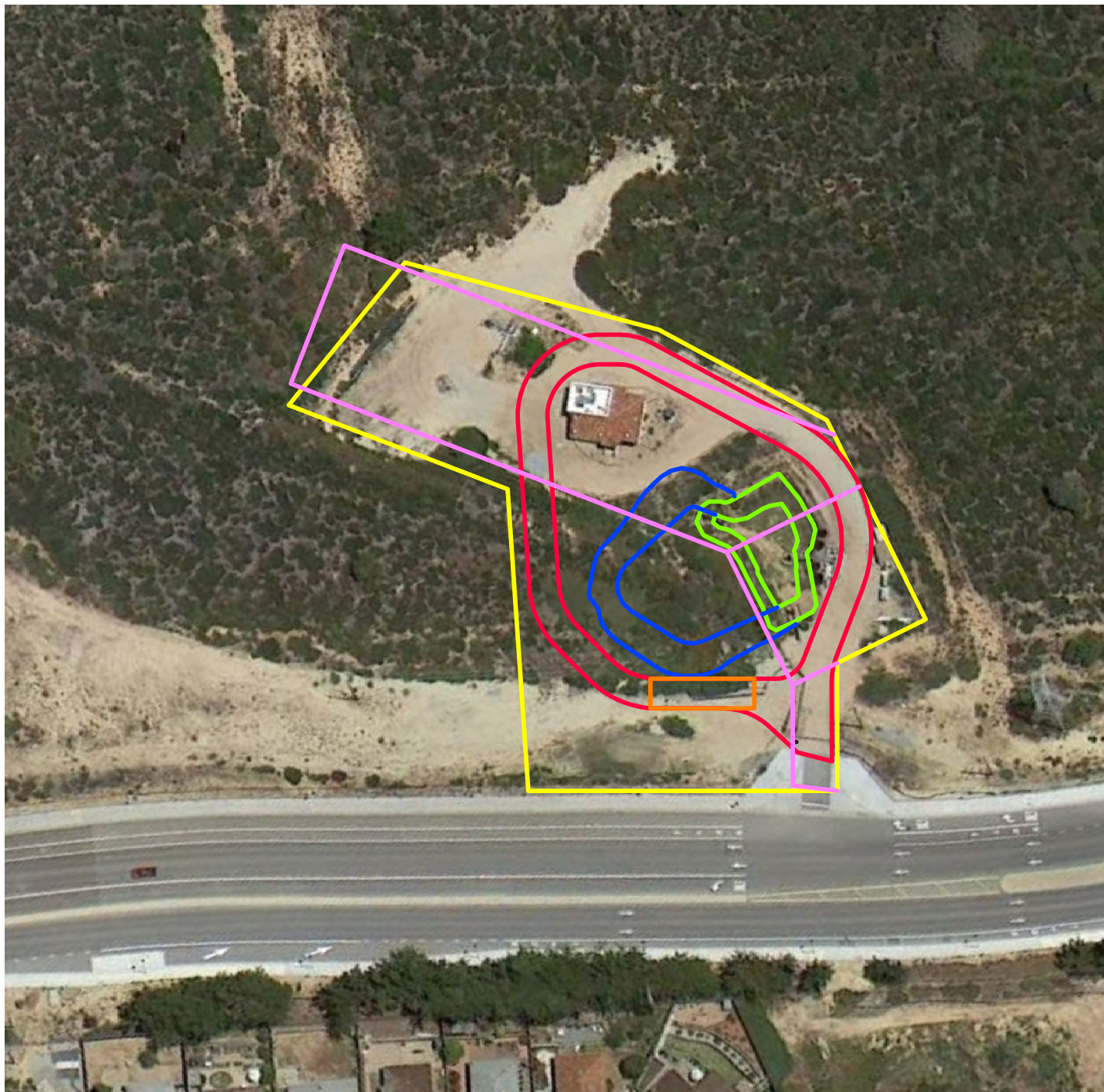
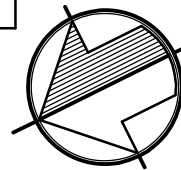


**LEGEND**

PROPOSED MPWMD PARCEL  
 EXISTING MPWMD PARCEL  
 ALT 5 ACCESS ROAD  
 CHEMICAL LOADING RACK  
 EXISTING POND  
 NEW POND



NEW LAND ACQUIRED	0.88 ACRES
LAND DEEDED BACK TO CITY	0.06 ACRES



**Creegan+D'Angelo**  
 INFRASTRUCTURE  
 ENGINEERS

225 Cannery Row, Suite H  
 Monterey, CA 93940  
 Tel (831) 373-1333  
 Fax (831) 373-0733

[www.cdengineers.com](http://www.cdengineers.com)

**PROPOSED EXPANSION**

**SANTA MARGARITA WELL SITE**

DATE: 06-20-13  
 C+D JOB: 710005.00

SCALE: 1"=100'  
 SHEET 1 OF 1