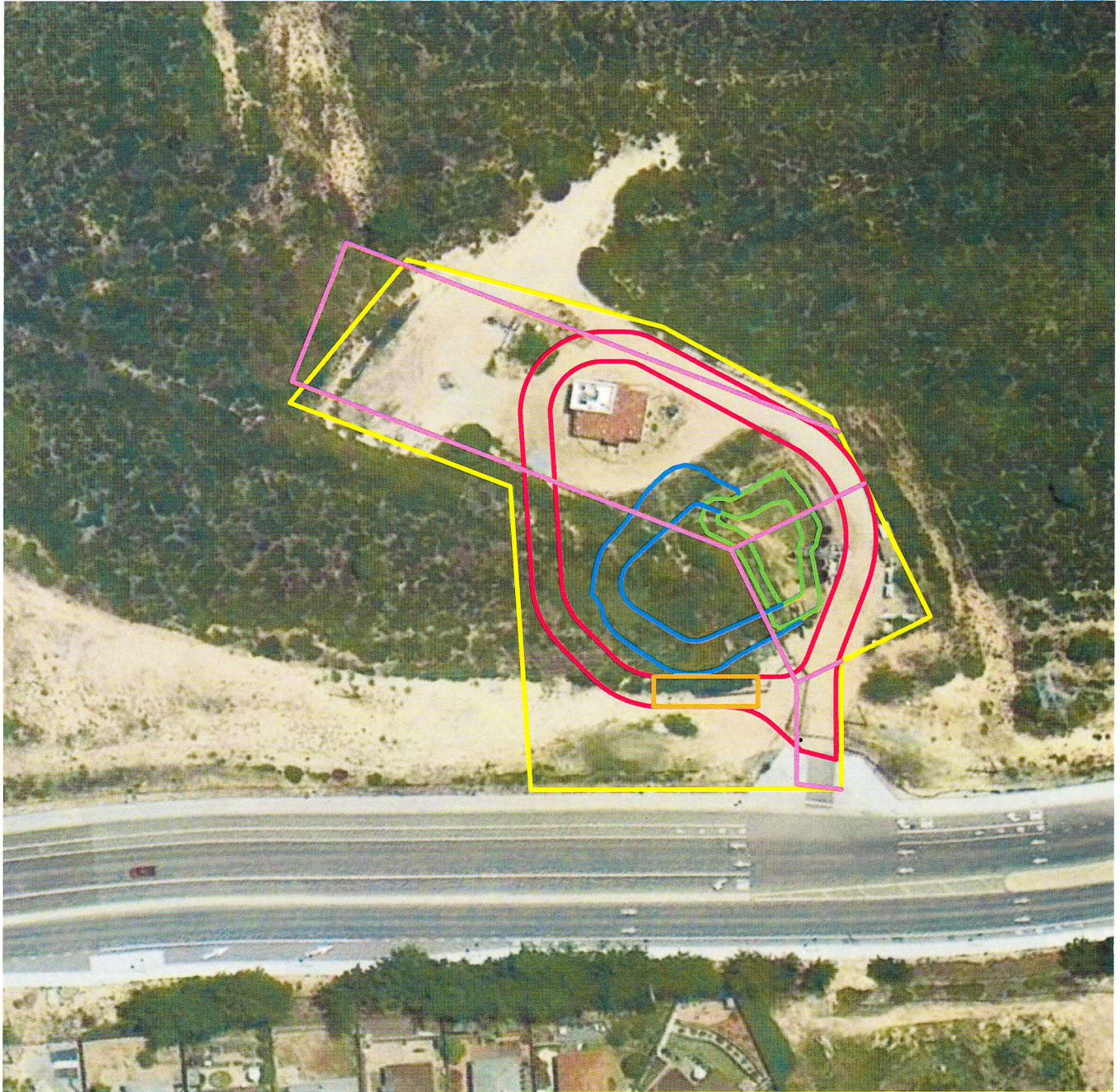
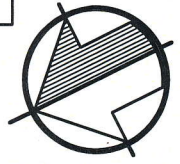


*Submitted at
October 14, 2013
Administrative Committee
meeting*

LEGEND

- PROPOSED MPWMD PARCEL
- EXISTING MPWMD PARCEL
- ALT 5 ACCESS ROAD
- CHEMICAL LOADING RACK
- EXISTING POND
- NEW POND

NEW LAND ACQUIRED	0.88 ACRES
LAND DEEDED BACK TO CITY	0.06 ACRES



Creegan + D'Angelo
INFRASTRUCTURE
ENGINEERS

225 Cannery Row, Suite H
Monterey, CA 93940
Tel (831) 373-1333
Fax (831) 373-0733

www.cdengineers.com

**EXHIBIT 2B
SANTA MARGARITA WELL SITE**

DATE: 06-20-13
C+D JOB: 710005.00

SCALE: 1"=100'
SHEET 1 OF 1