



## **Item 13: Drought Response**

***Dave Stoldt***

***Monterey Peninsula Water Management District***

***December 14, 2015***

# Drought Monitor – California Today

## U.S. Drought Monitor California

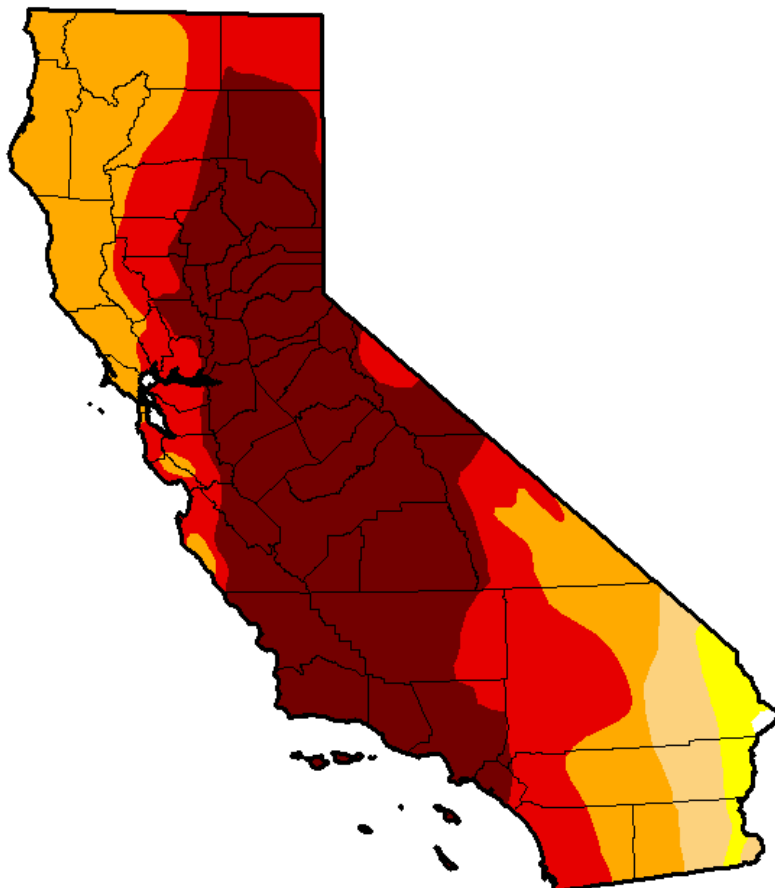
**December 8, 2015**

*(Released Thursday, Dec. 10, 2015)*

Valid 7 a.m. EST

*Drought Conditions (Percent Area)*

	None	D0-D4	D1-D4	D2-D4	D3-D4	D4
<b>Current</b>	0.14	99.86	97.33	92.26	69.09	44.84
<b>Last Week</b> <i>12/1/2015</i>	0.14	99.86	97.33	92.26	70.55	44.84
<b>3 Months Ago</b> <i>9/8/2015</i>	0.14	99.86	97.35	92.36	71.08	46.00
<b>Start of Calendar Year</b> <i>12/30/2014</i>	0.00	100.00	98.12	94.34	77.94	32.21
<b>Start of Water Year</b> <i>9/29/2015</i>	0.14	99.86	97.33	92.36	71.08	46.00
<b>One Year Ago</b> <i>12/9/2014</i>	0.00	100.00	99.72	94.42	79.69	55.08



Intensity:

- D0 Abnormally Dry
- D1 Moderate Drought
- D2 Severe Drought
- D3 Extreme Drought
- D4 Exceptional Drought

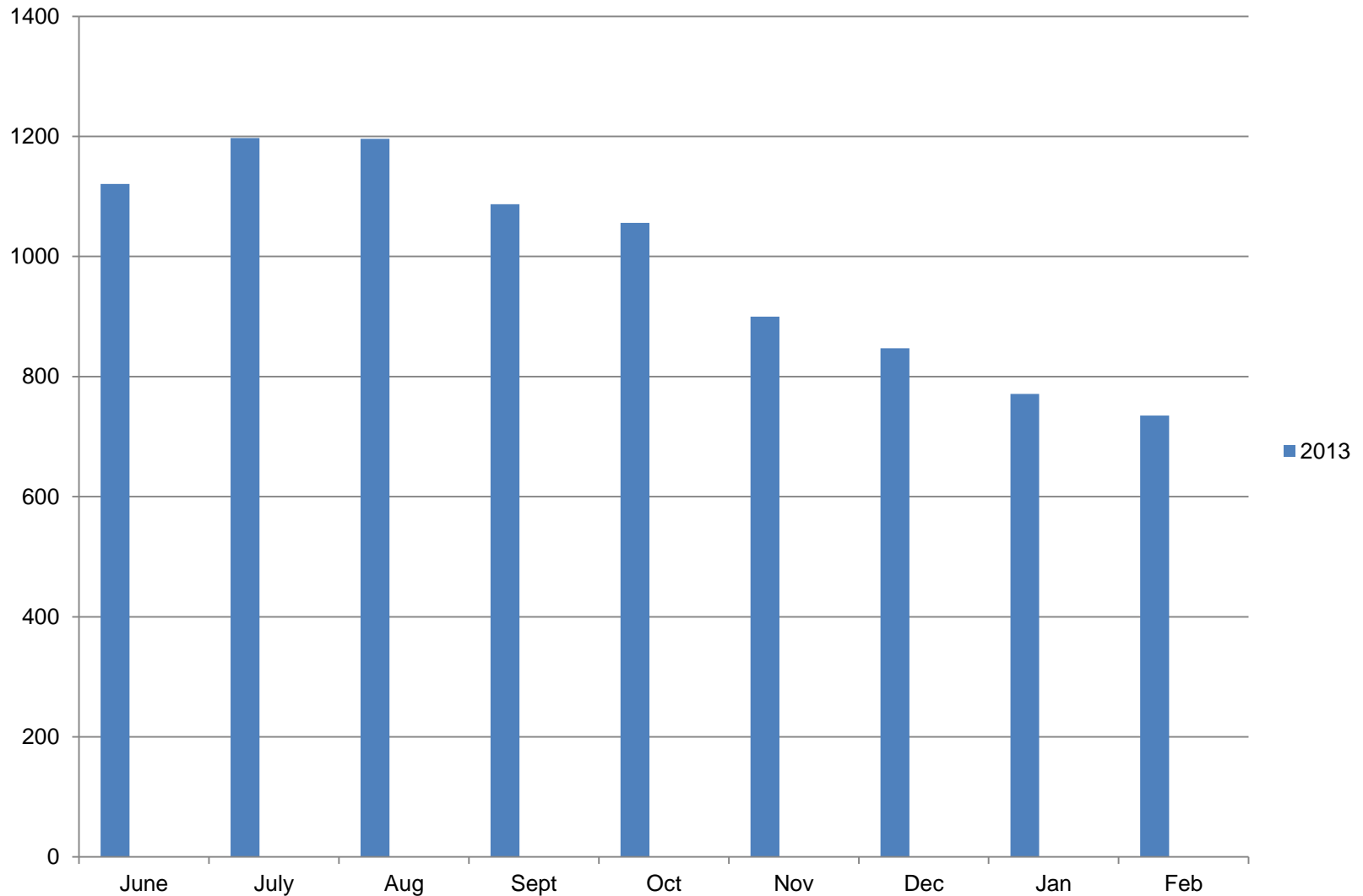
*The Drought Monitor focuses on broad-scale conditions. Local conditions may vary. See accompanying text summary for forecast statements.*

**Author:**

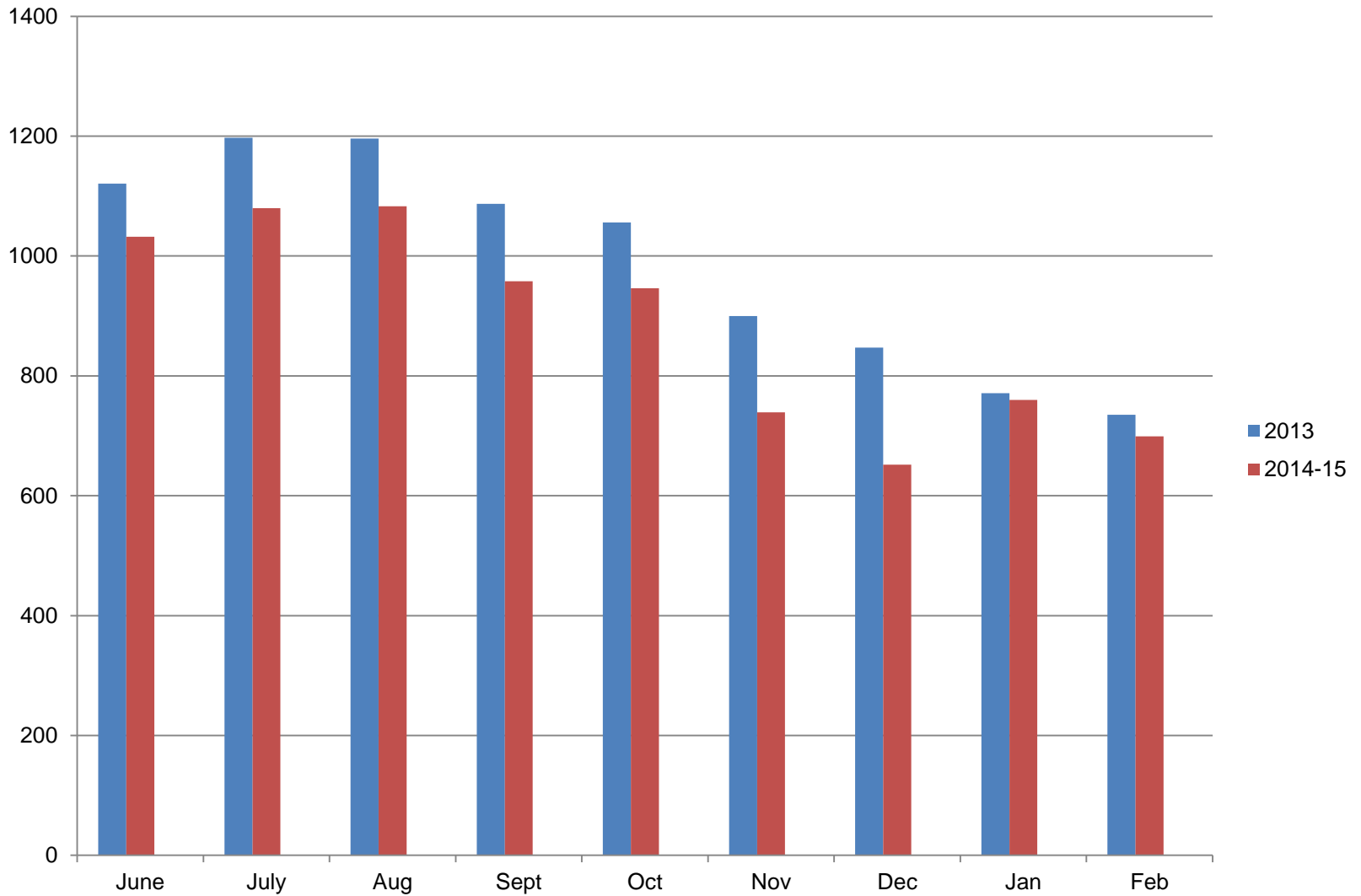
Richard Tinker  
 CPC/NOAA/NWS/NCEP



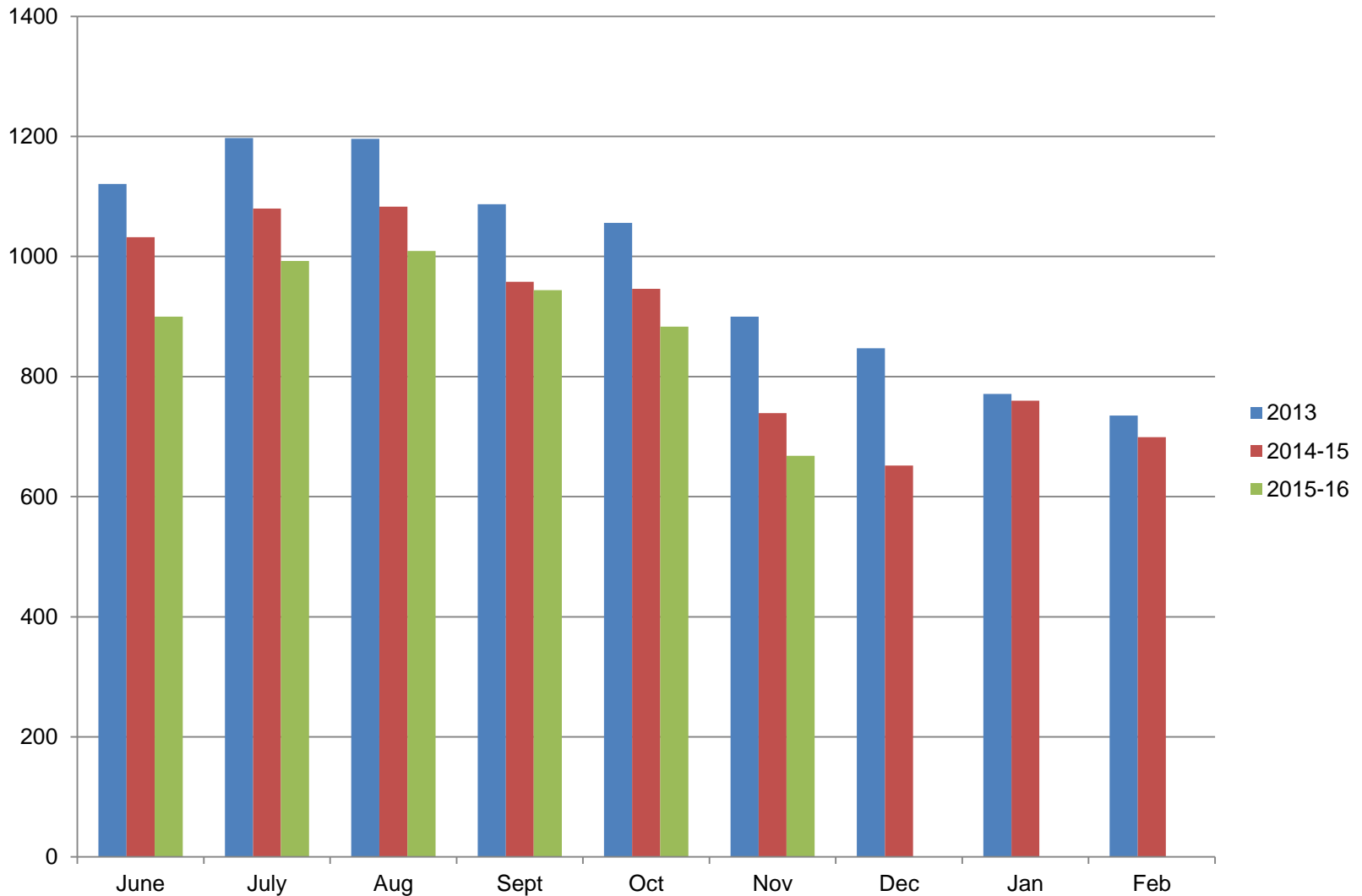
# New Mandatory Conservation Standards Monterey Peninsula 2013 Target Year



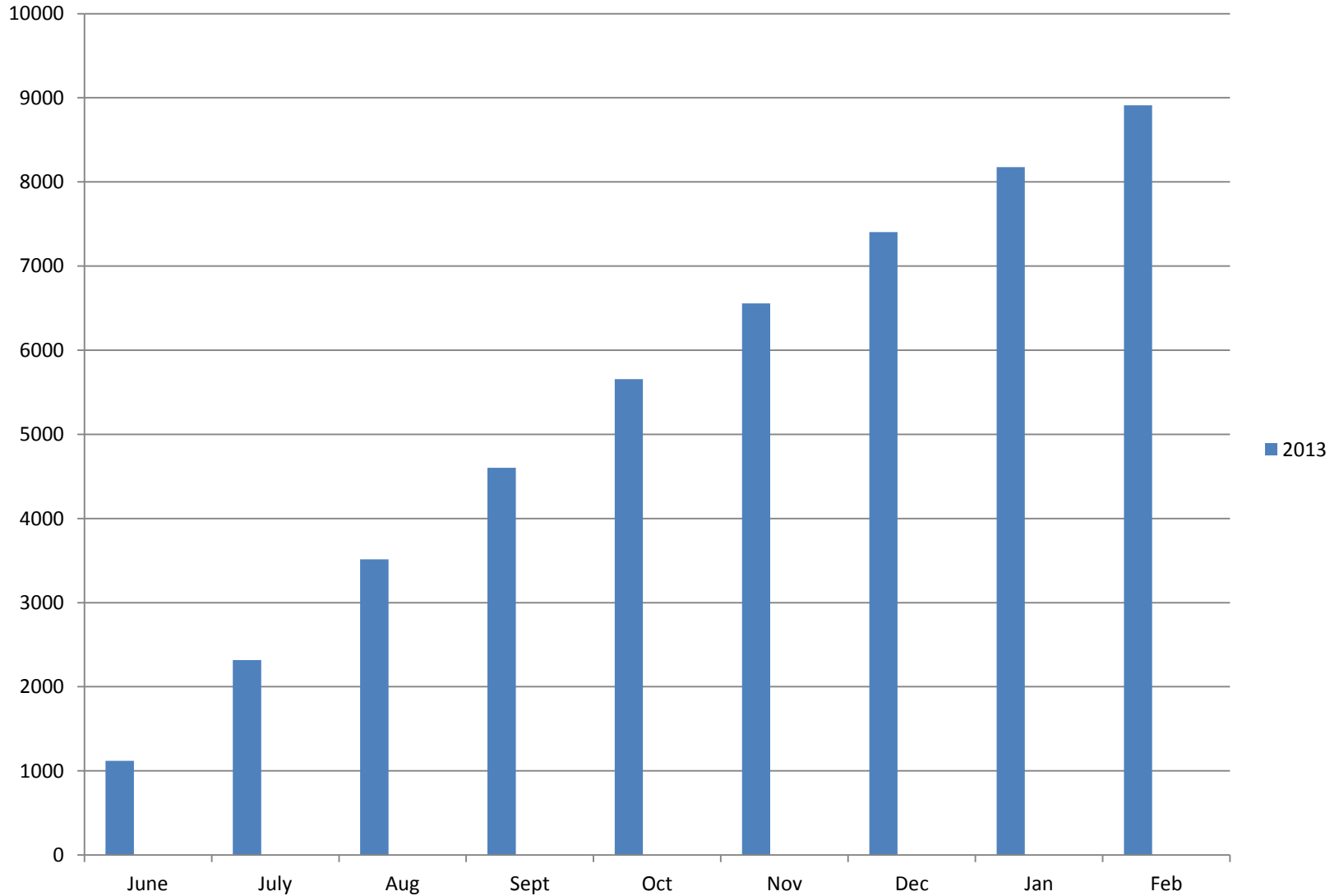
# Last Year's Performance



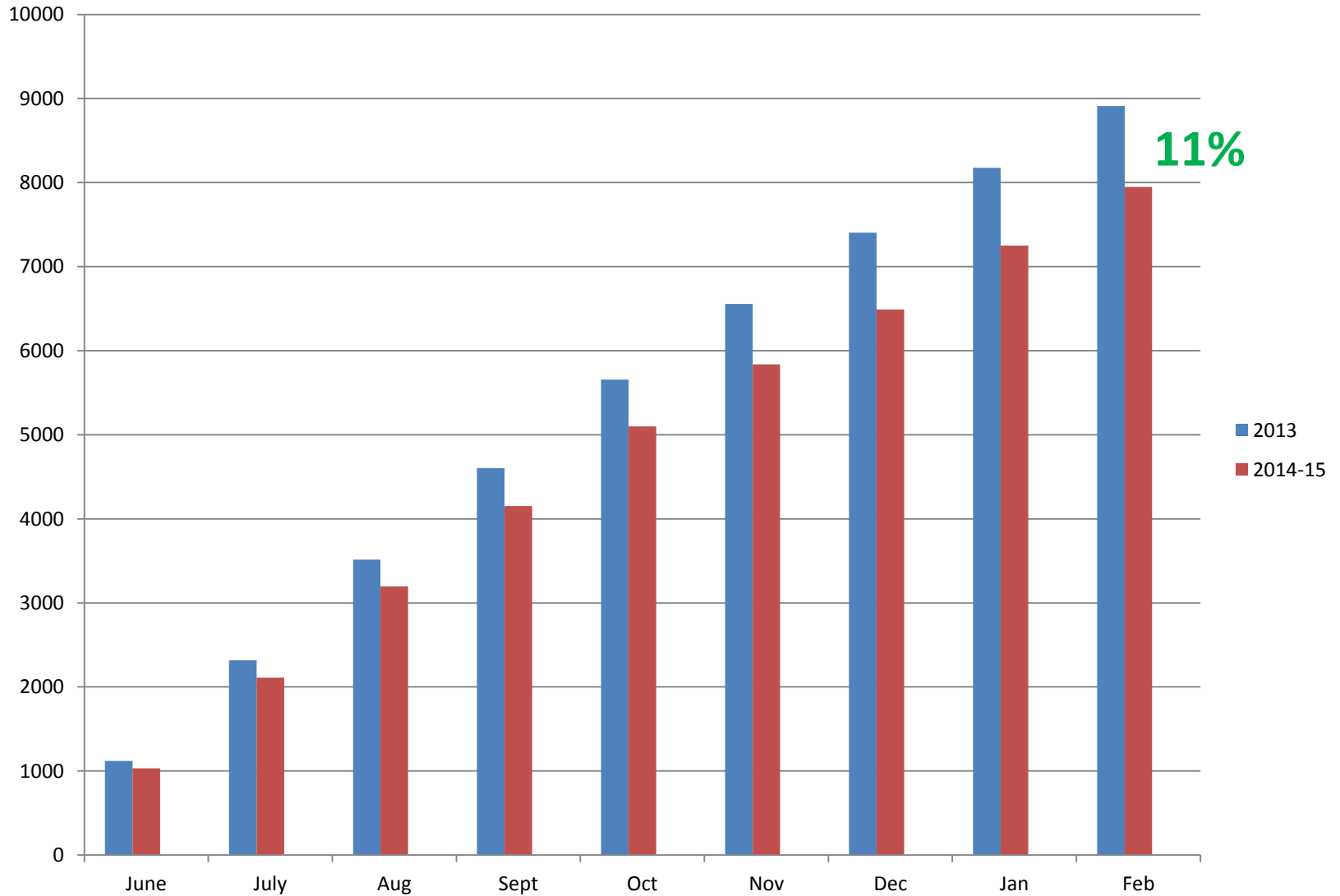
# The 2015 Sweepstakes: How Are We Doing So Far?



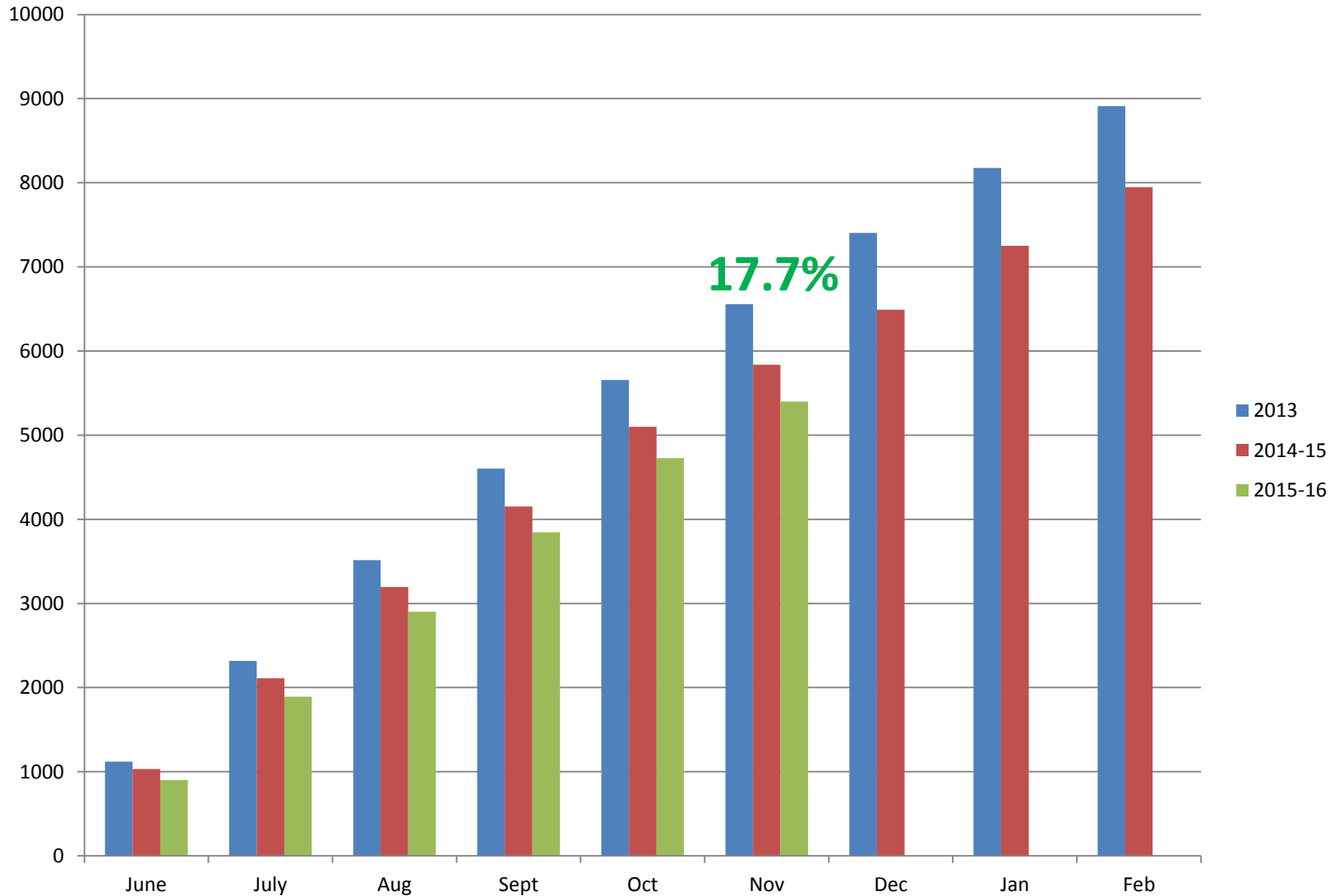
# New Mandatory Conservation Standards Monterey Peninsula 2013 Target Year



# Last Year's Performance



# New Mandatory Conservation Standards Monterey Peninsula 2013 Target Year





# Seaside Municipal Performance

Production	2013 (gallons)	2015 (gallons)	Difference in Usage 2015 compared to 2013
June	6,726,000	5,469,000	-19%
July	8,348,000	6,237,000	-25%
August	7,334,000	5,987,000	-18%
September	8,409,000	5,478,000	-35%
October	6,908,000	5,385,000	-22%
November	6,133,000	4,455,000	-27%
Overall	43,858,000	33,011,000	-25%