



General Manager's Report Item 10:

Status Report on Cal-Am Compliance
with SWRCB Orders and Seaside Basin
Decision as of October 1, 2015

Meeting Date: October 19, 2015

Staff contact: David J. Stoldt

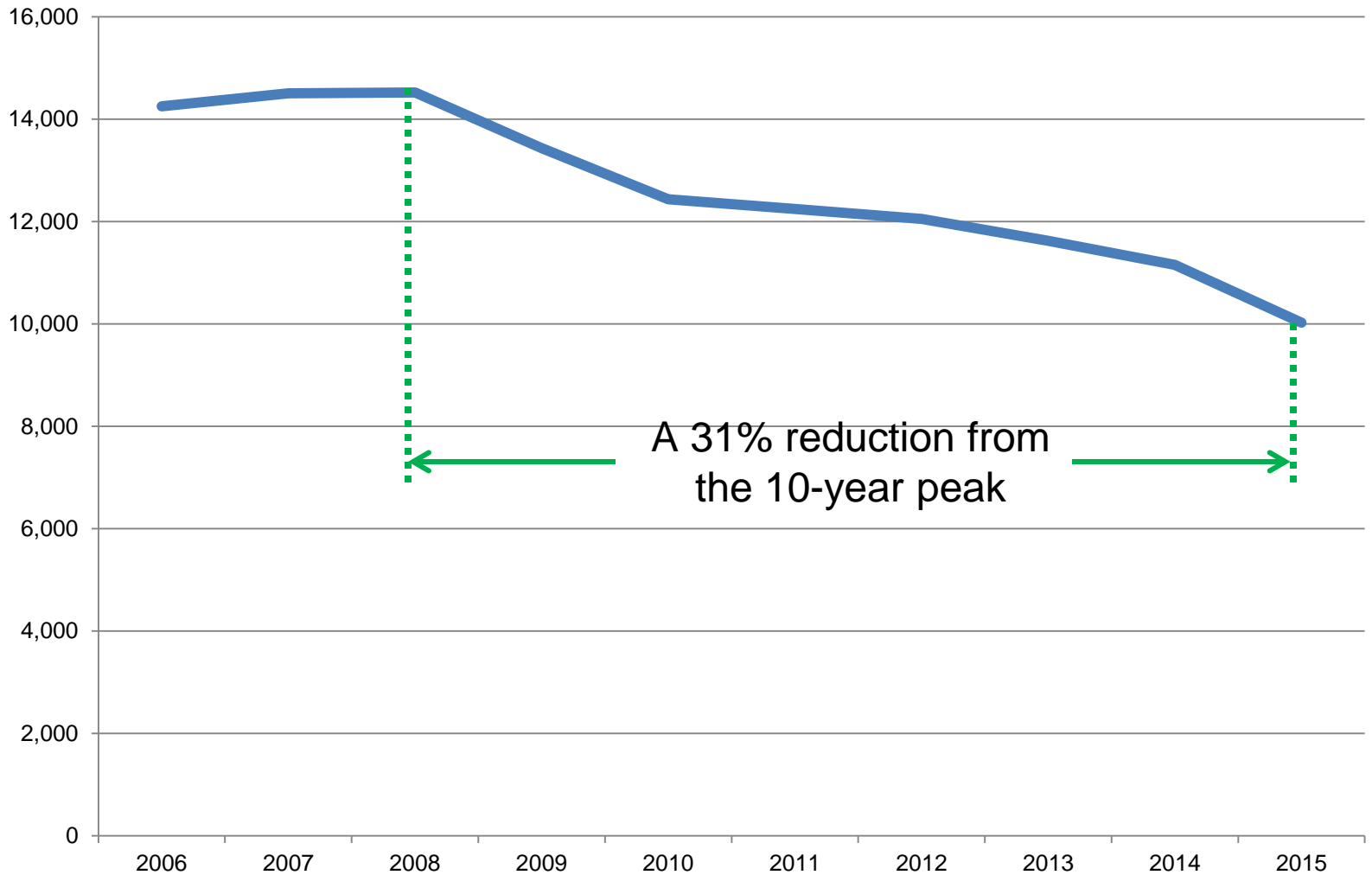
Actual versus Target Production for Cal-Am: September 2015 (All Values in Acre-Feet)

Year-to-Date Values	Carmel River Basin	Seaside Groundwater Basin		Water Projects		MPWRS Total
		Coastal	Laguna Seca	ASR Projects	Sand City	
Target	9,645	2,251	48	0	300	12,244
Actual	7,013	2,437	328	0	245	10,024
Difference	2,632	-186	-280	0	55	2,220

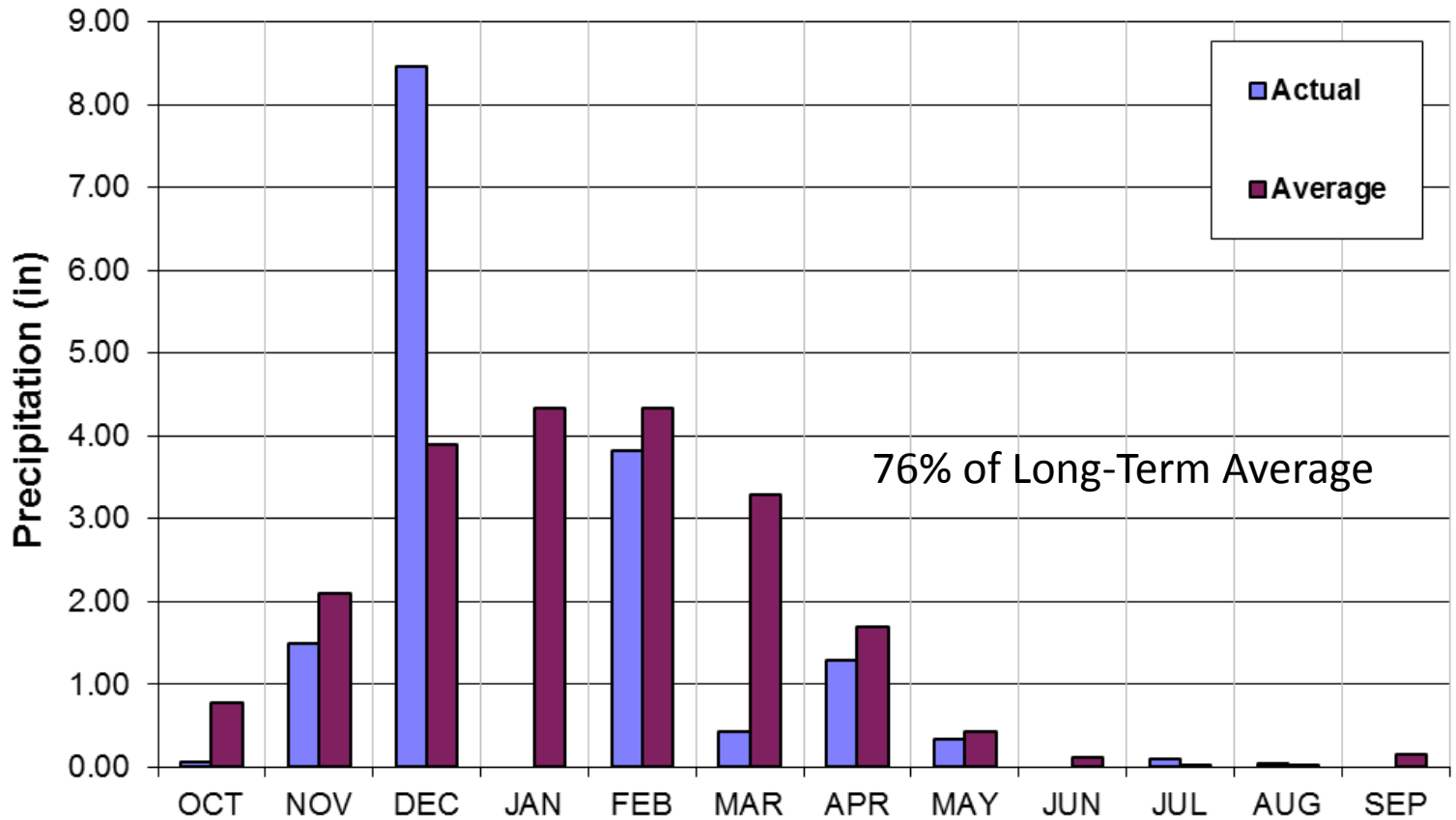
Notes:

1. “Sand City” refers to the Sand City Desalination Facility, which pumps brackish water from the Seaside Groundwater Basin as source water. The Sand City values refer to yield from the facility.
2. “ASR Projects” refers to the Phase 1 and 2 Aquifer Storage and Recovery (ASR) Project and the values refer to the amount of stored water recovered for customer service.
3. “MPWRS” refers to Monterey Peninsula Water Resource System.
4. Carmel River Basin Target reflects assumed annual production of 300 AF from Sand City.
5. Production numbers are estimated pending finalization of CAW production data.
6. Carmel River Basin target represents quarterly adjustments based on differences between budgeted values and actual production from other sources.

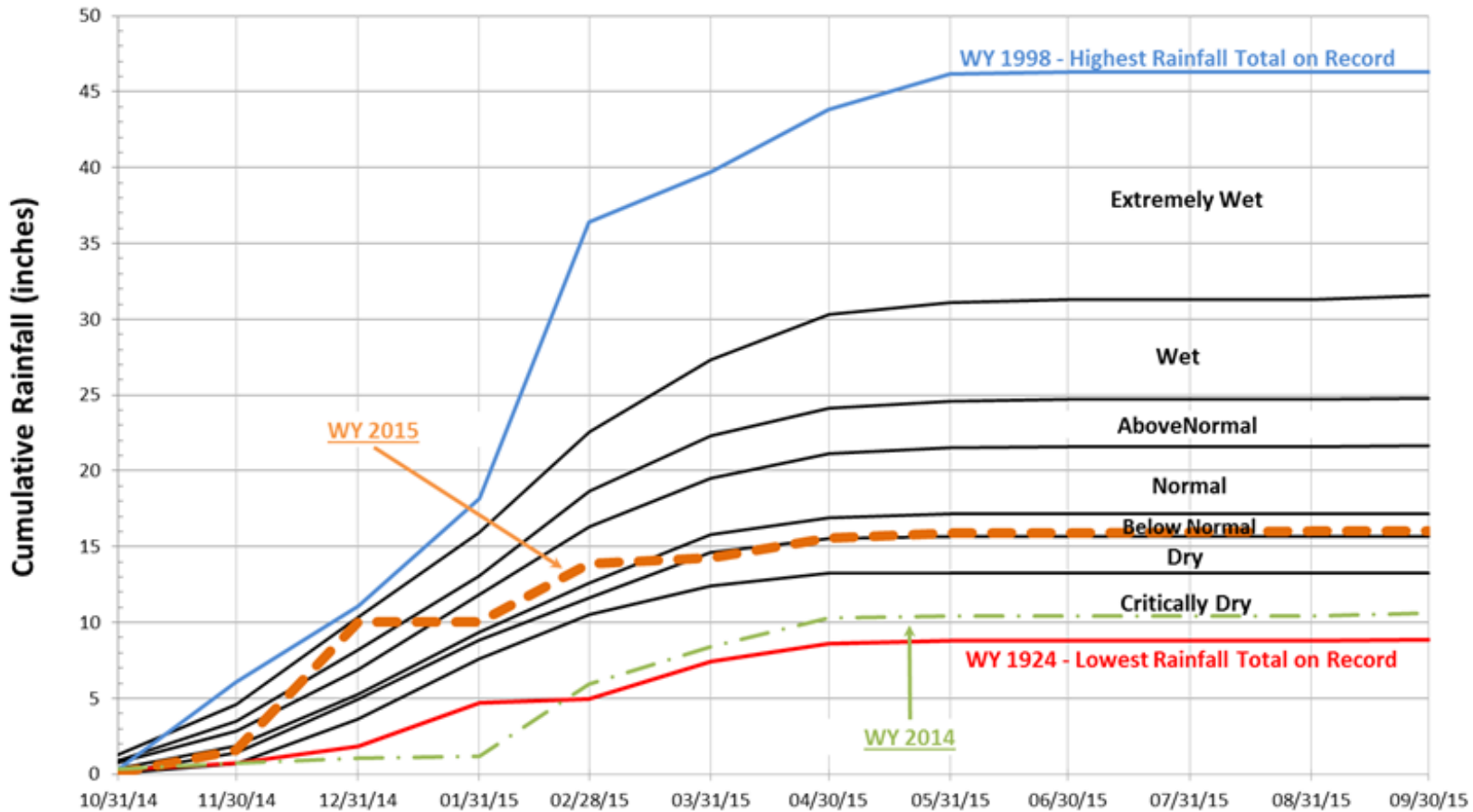
Cal-Am Water Production from MPWRS Last 10 Years



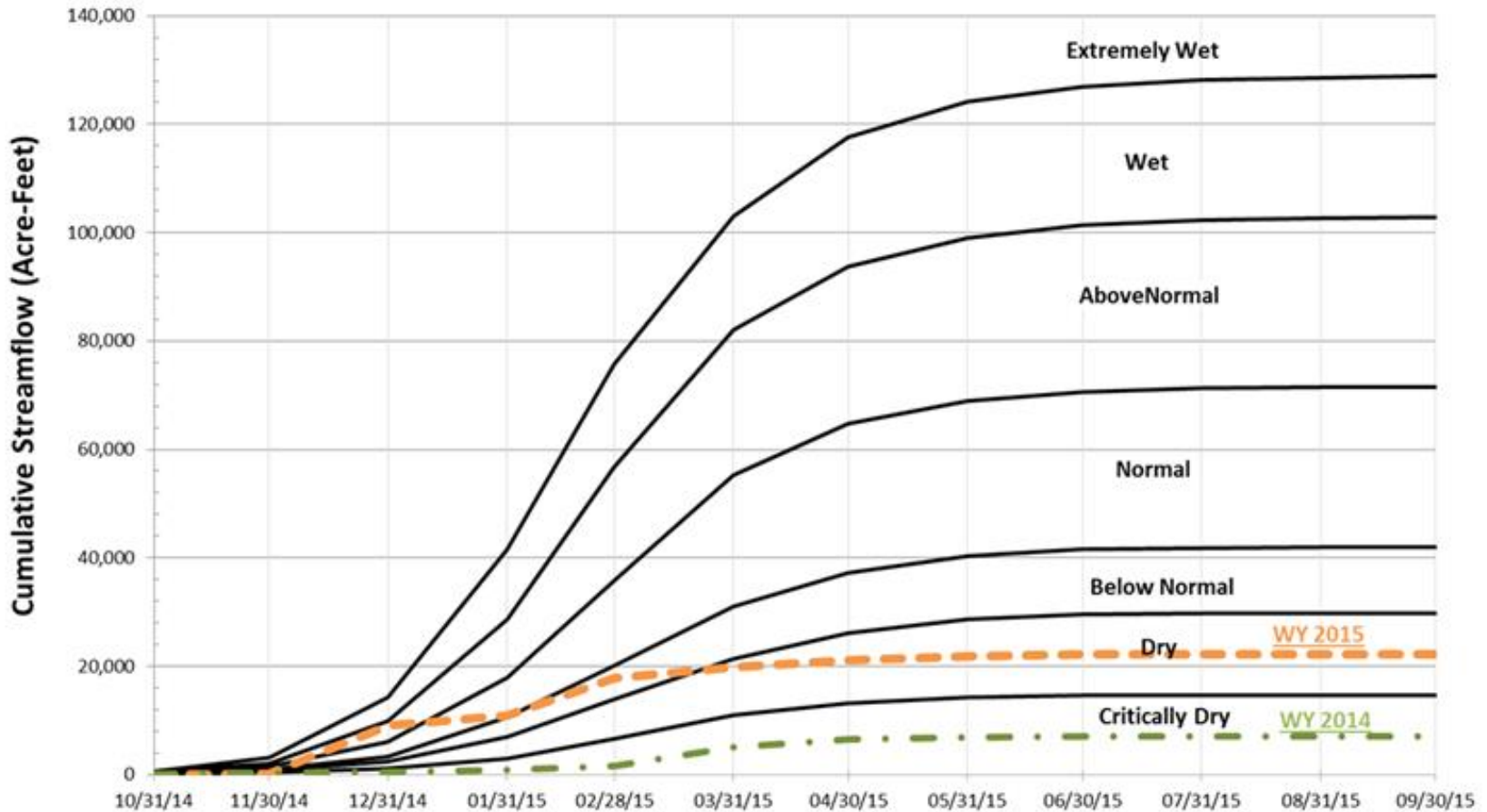
Recorded Rainfall at San Clemente Dam: Water Year 2015



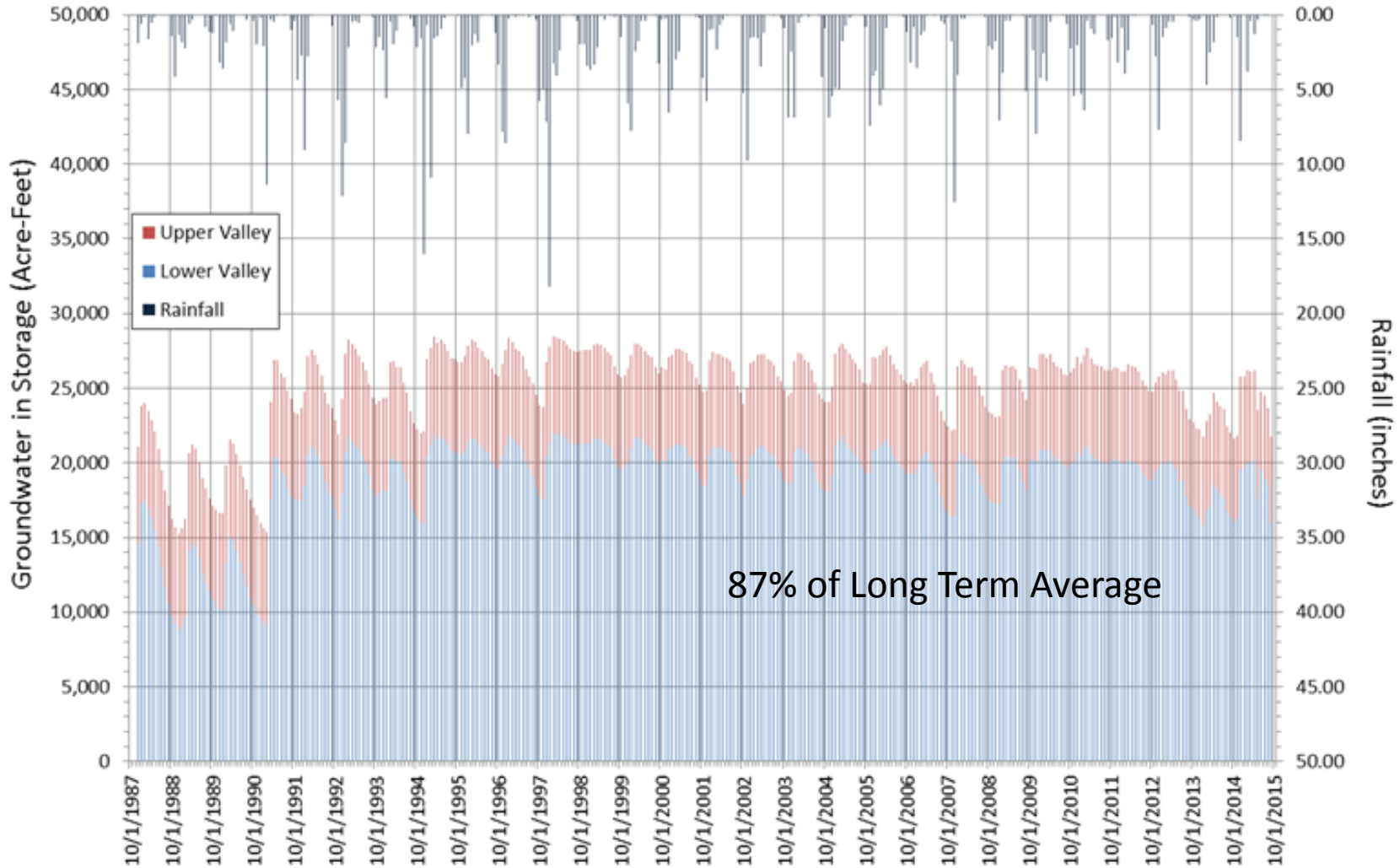
Water Year Classification By Recorded Rainfall



Water Year Classification By Unimpaired Streamflow



Recorded Rainfall v. Carmel Valley Aquifer Storage



The 2015 Conservation Sweepstakes: How Are We Doing So Far?

