

ITEM: ACTION

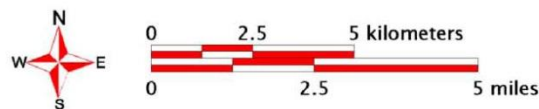
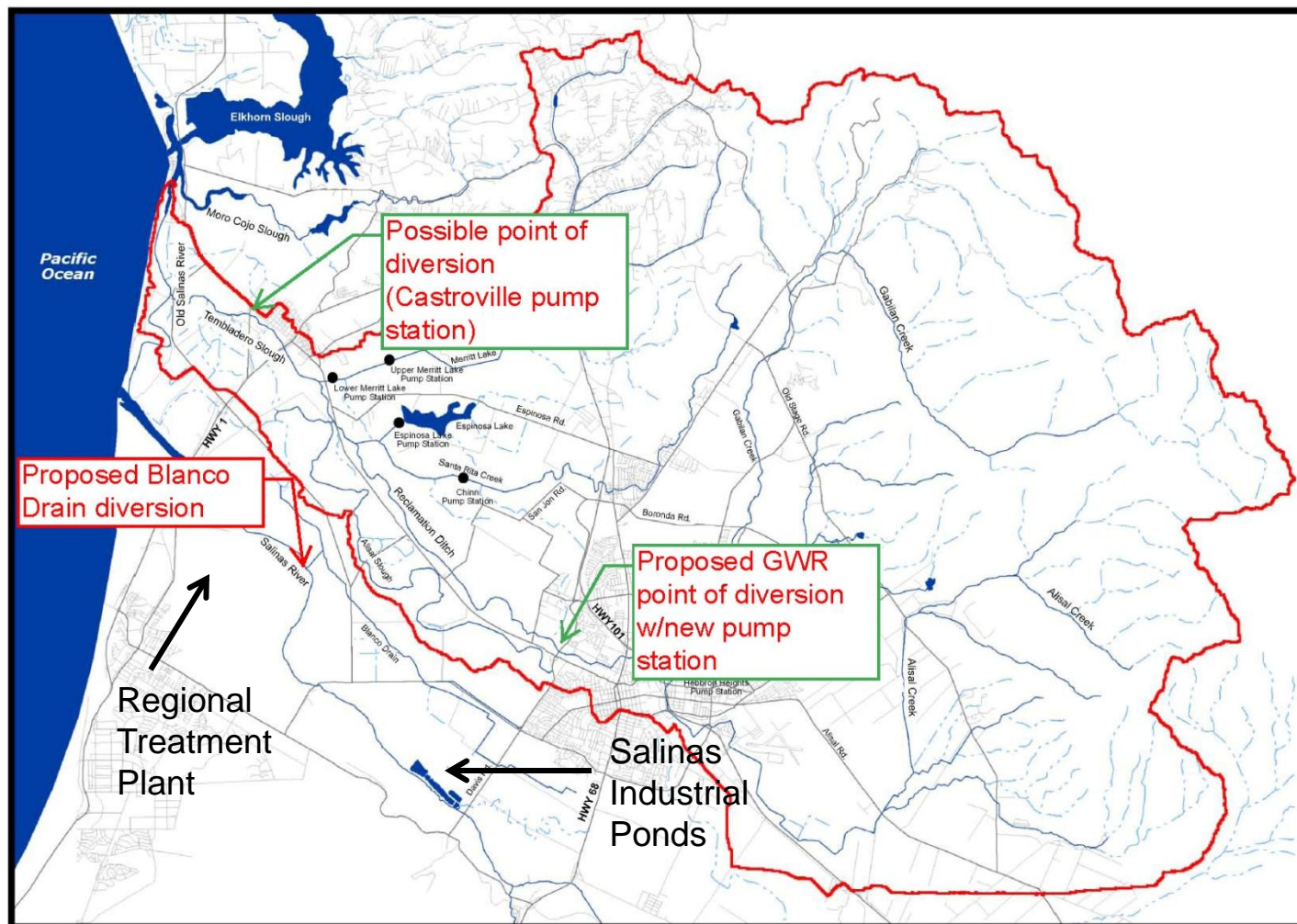
XX. CONSIDER AUTHORIZATION FOR THE GENERAL MANAGER TO FILE WITH THE STATE WATER RESOURCES CONTROL BOARD APPLICATIONS TO APPROPRIATE WATERS OF THE RECLAMATION DITCH, TEMBLADERO SLOUGH AND BLANCO DRAIN IN THE SALINAS VALLEY FOR THE PURPOSE OF PROVIDING SOURCE WATER TO THE PURE WATER MONTEREY PROJECT, SUBJECT TO BEING A JOINT FILING WITH THE MONTEREY REGIONAL WATER POLLUTION CONTROL AGENCY

Reclamation Ditch Watershed



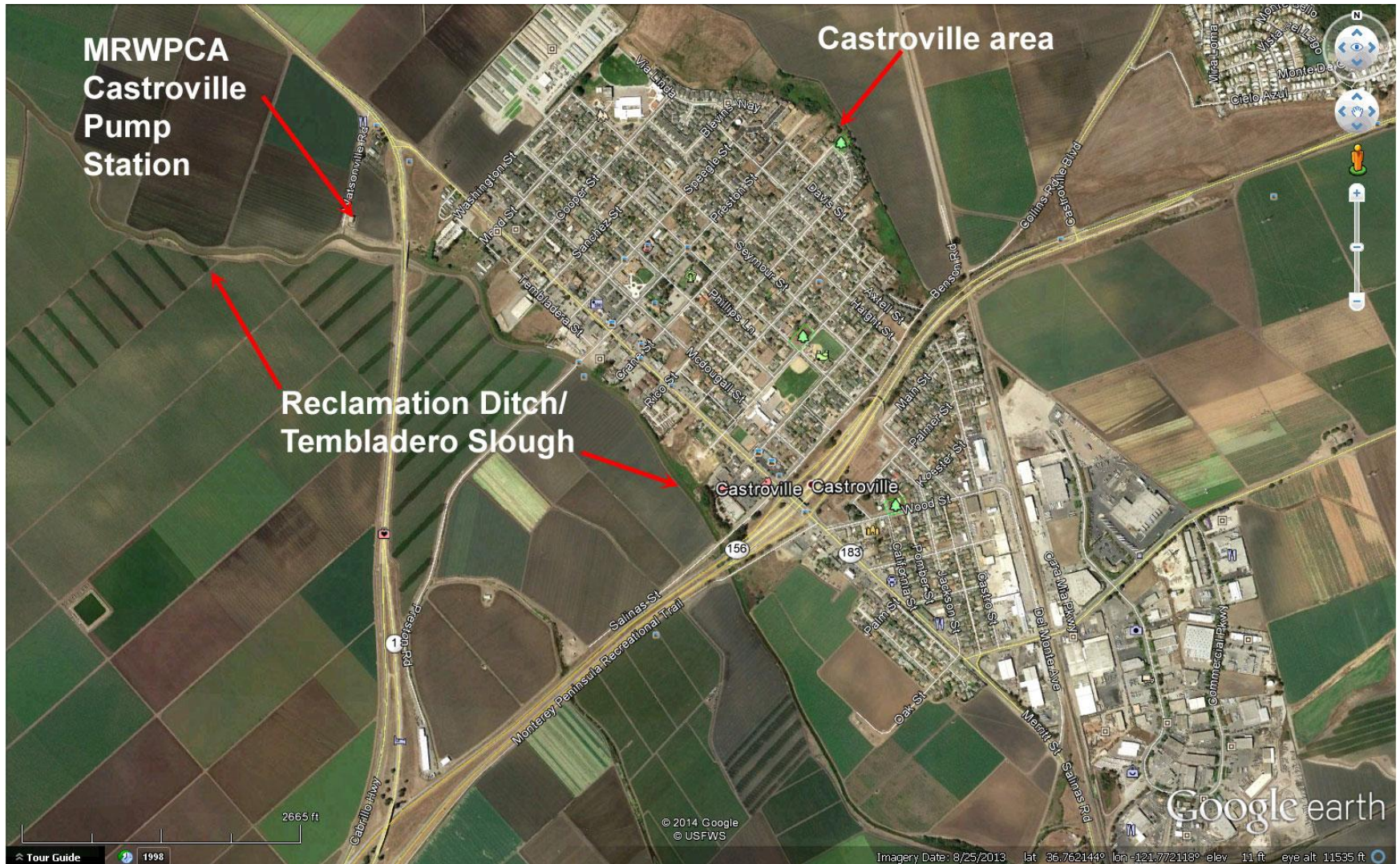
- 157 square-mile watershed
 - Rec Ditch drains urban runoff from City of Salinas, surrounding foothills and ag lands (through tile drains)
 - empties into Tembladero Slough and then to Moss Landing
- Does not contribute directly into Salinas River
- Listed as an impaired water for ammonia, fecal coliform, pesticides, nitrate, toxicity and other parameters
- Drainage canal built between 1917 and 1920 through sloughs

Proposed Diversion Points

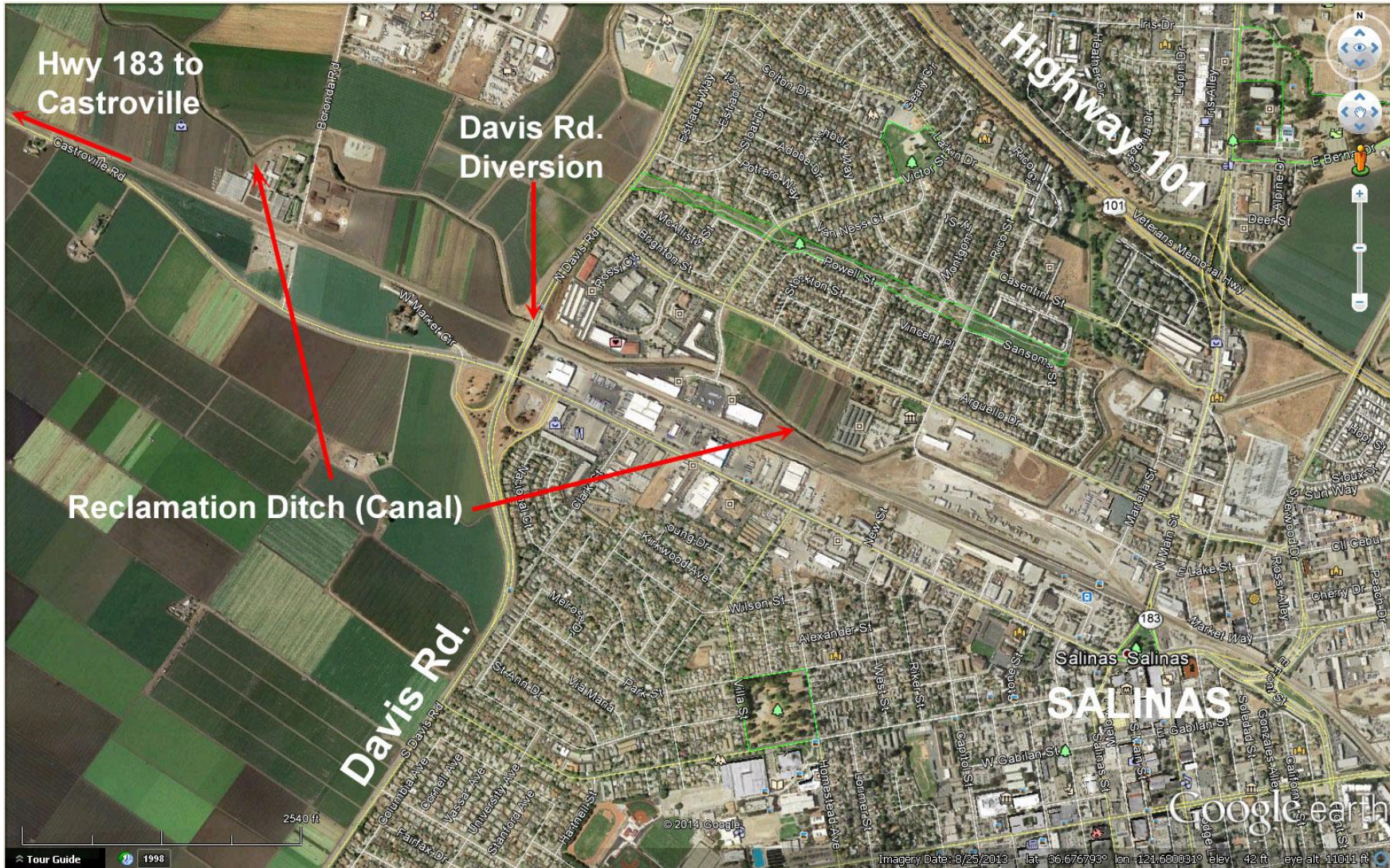


Map produced: Joel Casagrande & Fred Watson
 Streams: USGS NHD dataset
 Roads: Monterey County
 (c) CCoWS, 2004

Castroville Diversion



Reclamation Ditch Davis Road Diversion



Reclamation Ditch Davis Road Diversion

- Build diversion facilities and pump station at Davis Road
- Pump to a gravity portion of existing sewer line
- Uses mostly existing infrastructure



Reclamation Ditch, Monterey County
Looking downstream at Hwy 183/Market St.
(proposed point of diversion)



Reclamation Ditch
in City of Salinas

Blanco Drain Diversion




The Blanco Drain

- Man-made ditch that drains 6,400-acre drainage, 97% is in ag land use
- Runoff is from tile drains and some stormwater
- System is maintained by MCWRA
- Drains to Salinas River near rubber dam (SRDF)
- Listed as impaired water for pesticides, nitrates, chloride & other parameters
- Proposal: build a diversion, pump station, and pipeline improvements to RTP





Staff Recommendation

- 
1. Authorize the General Manager to File with the State Water Resources Control Board Applications to Appropriate Waters of the Reclamation Ditch, Tembladero Slough and Blanco Drain in the Salinas Valley.
 2. Expend up to \$90,000 to prepare and submit applications.
 3. Request that the Monterey Regional Water Pollution Control Agency consider joining in the application to the State Water Resources Control Board.

For More Information

District website:

www.mpwmd.net

PowerPoint presentations will be posted on the website the day after the meeting

Staff contact for this item:

Larry Hampson, District Engineer

larry@mpwmd.net

(831) 658-5620