A photograph of a wooden roof truss structure under construction, showing the intricate framework of beams and supports against a clear blue sky.

**ITEM 15. CONSIDER APPEAL OF STAFF DETERMINATION TO APPROVE PERMIT #S12-04-L2 FOR PISENTI (WELL #2) WATER DISTRIBUTION SYSTEM**

Meeting Date: August 20, 2012

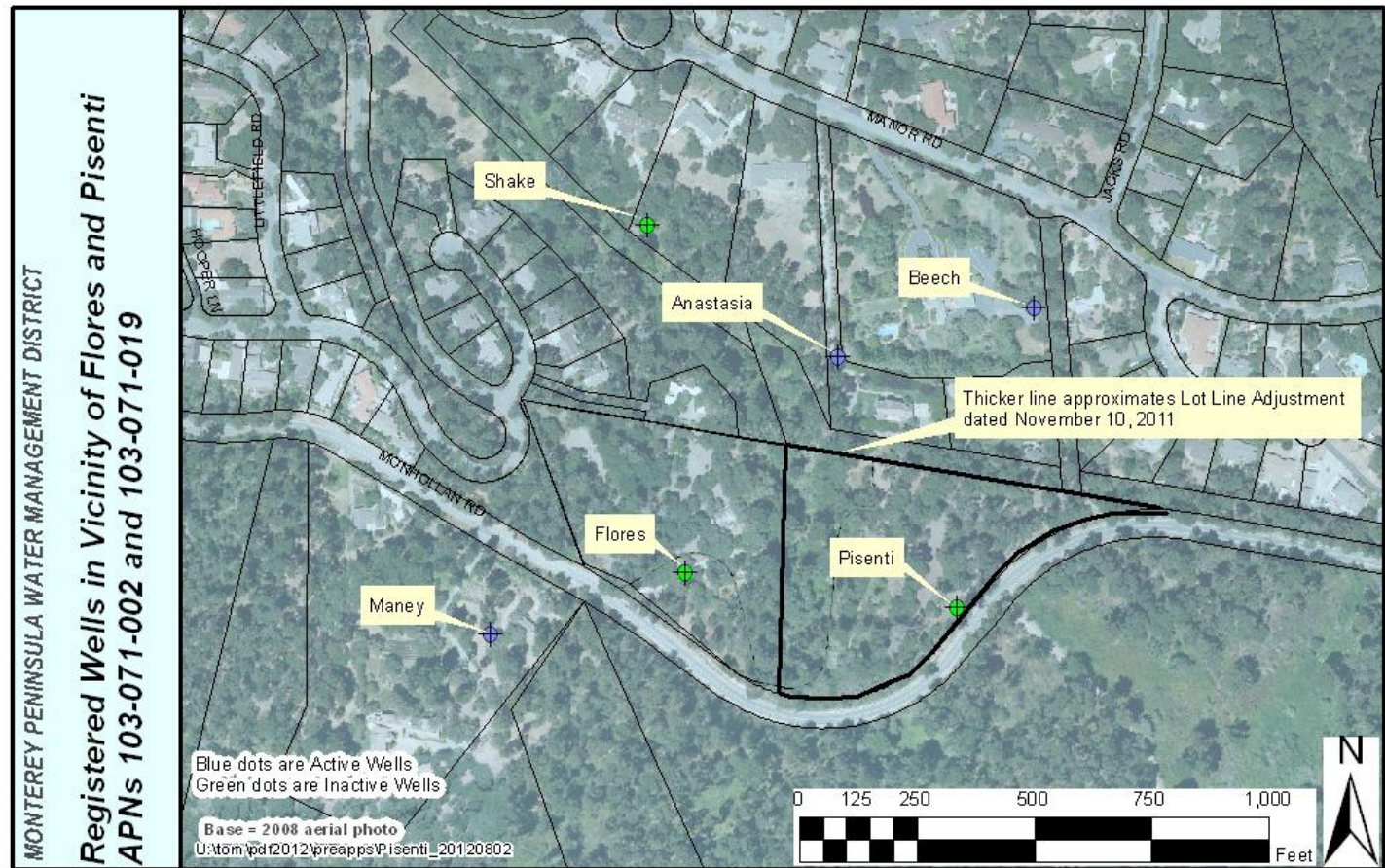
Contacts: David Stoldt, Joe Oliver, Henrietta Stern

# Pisenti WDS Overview

- Same history, appeal and issues as for Flores Well #1.
- Key Issue #1: Should District Engineer's determination to approve Pisenti (Well #2) WDS Permit be upheld as written?
- Key issue #2: Should relief requested by the Appellant be granted (well re-testing and monitoring)? [*Exhibit 14-C*]



# Project Area





# Gen. Mgr. Recommendations

- Board should select an option (1= approve permit; 2= approve with a new condition; 3= continue item; or 4= deny permit).
- Option 1 is best choice based on evidence in the record.
- Select Option 2 if Board feels there still is substantive uncertainty about impact to neighboring wells that a re-test would resolve.
- Option 3 or 4 are not recommended.
- Instruct staff to provide Findings in support of Board choice for adoption as a Consent Item next month.



# For More Information

Staff reports, ordinances and presentation materials can be found on the District's website at:

**[www.mpwmd.net](http://www.mpwmd.net)**

PowerPoint presentations will be posted on the website the day after the meeting