



# General Manager's Report

## Item 1:

Status Report on Cal-Am Compliance  
with SWRCB Orders and Seaside Basin  
Decision as of June 1, 2012

*Meeting Date: June 12, 2012*

*Staff contact: David J. Stoldt*

# Actual versus Target Production for Cal-Am: Oct 2011 – May 2012

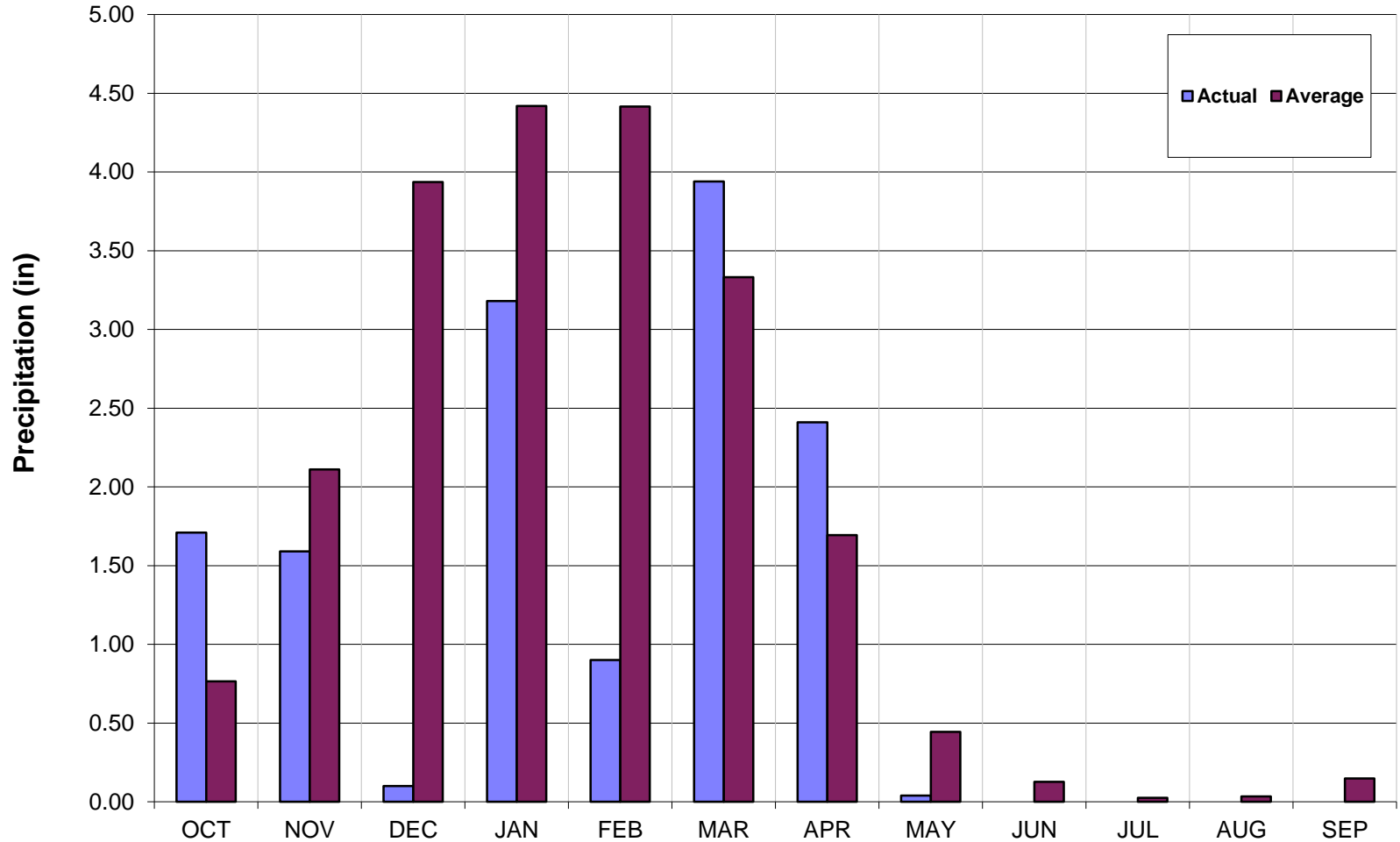
(All Values in Acre-Feet)

Year-to-Date Values	Carmel River Basin	Water Project 1	Seaside Groundwater Basin			MPWRS Total
			Coastal	Laguna Seca	Sand City	
<b>Target</b>	<b>4,409</b>	<b>1,117</b>	<b>1,892</b>	<b>79</b>	<b>200</b>	<b>7,697</b>
<b>Actual</b>	<b><u>5,123</u></b>	<b><u>1,117</u></b>	<b><u>706</u></b>	<b><u>224</u></b>	<b><u>181</u></b>	<b><u>7,351</u></b>
<b>Difference</b>	<b>-714</b>	<b>0</b>	<b>1,186</b>	<b>-145</b>	<b>19</b>	<b>346</b>

**Notes:**

1. “Sand City” refers to the Sand City Desalination Facility, which pumps brackish water from the Seaside Groundwater Basin as source water. The Sand City values refer to yield from the facility.
2. “Water Project 1” refers to the Phase 1 Aquifer Storage and Recovery (ASR) Project and the values refer to the amount of stored water recovered for customer service.
3. “MPWRS” refers to Monterey Peninsula Water Resource System.

# Recorded Rainfall at San Clemente Dam: Water Year 2012



# Estimated Unimpaired Carmel River Flow at San Clemente Dam: Water Year 2012

