



# General Manager's Report Item 10:

Status Report on Cal-Am Compliance  
with SWRCB Orders and Seaside Basin  
Decision as of July 31, 2011

August 15, 2011, Regular Meeting  
Staff contact: Darby Fuerst

# Actual versus Target Production for Cal-Am: Oct 2010 – Jul 2011

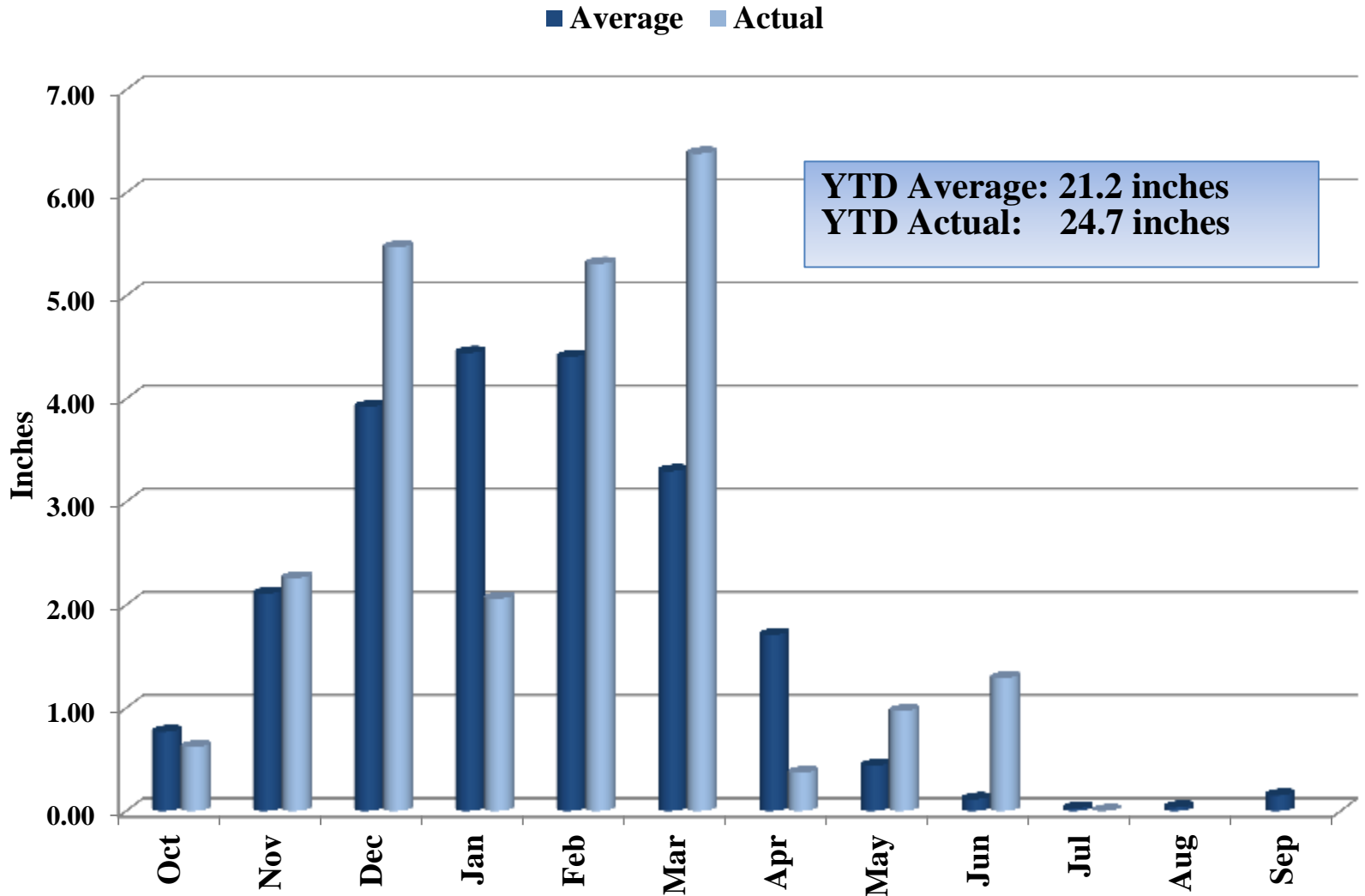
(All Values in Acre-Feet)

Year-to-Date Values	Carmel River Basin	Water Project 1	Seaside Groundwater Basin			MPWRS Total
			Coastal	Laguna Seca	Sand City	
<b>Target</b>	<b>7,247</b>	<b>1,111</b>	<b>2,220</b>	<b>188</b>	<b>250</b>	<b>11,016</b>
<b>Actual</b>	<b><u>6,194</u></b>	<b><u>1,111</u></b>	<b><u>2,022</u></b>	<b><u>298</u></b>	<b><u>231</u></b>	<b><u>9,856</u></b>
<b>Difference</b>	<b>1,053</b>	<b>0</b>	<b>198</b>	<b>-110</b>	<b>19</b>	<b>1,160</b>

**Notes:**

1. “Sand City” refers to the Sand City Desalination Facility, which pumps brackish water from the Seaside Groundwater Basin as source water. The Sand City values refer to yield from the facility.
2. “Water Project 1” refers to the Phase 1 Aquifer Storage and Recovery (ASR) Project and the values refer to the amount of stored water recovered for customer service.
3. “MPWRS” refers to Monterey Peninsula Water Resource System.

# Recorded Rainfall at San Clemente Dam: Water Year 2011



# Estimated Unimpaired Carmel River Flow at San Clemente Dam: Water Year 2011

