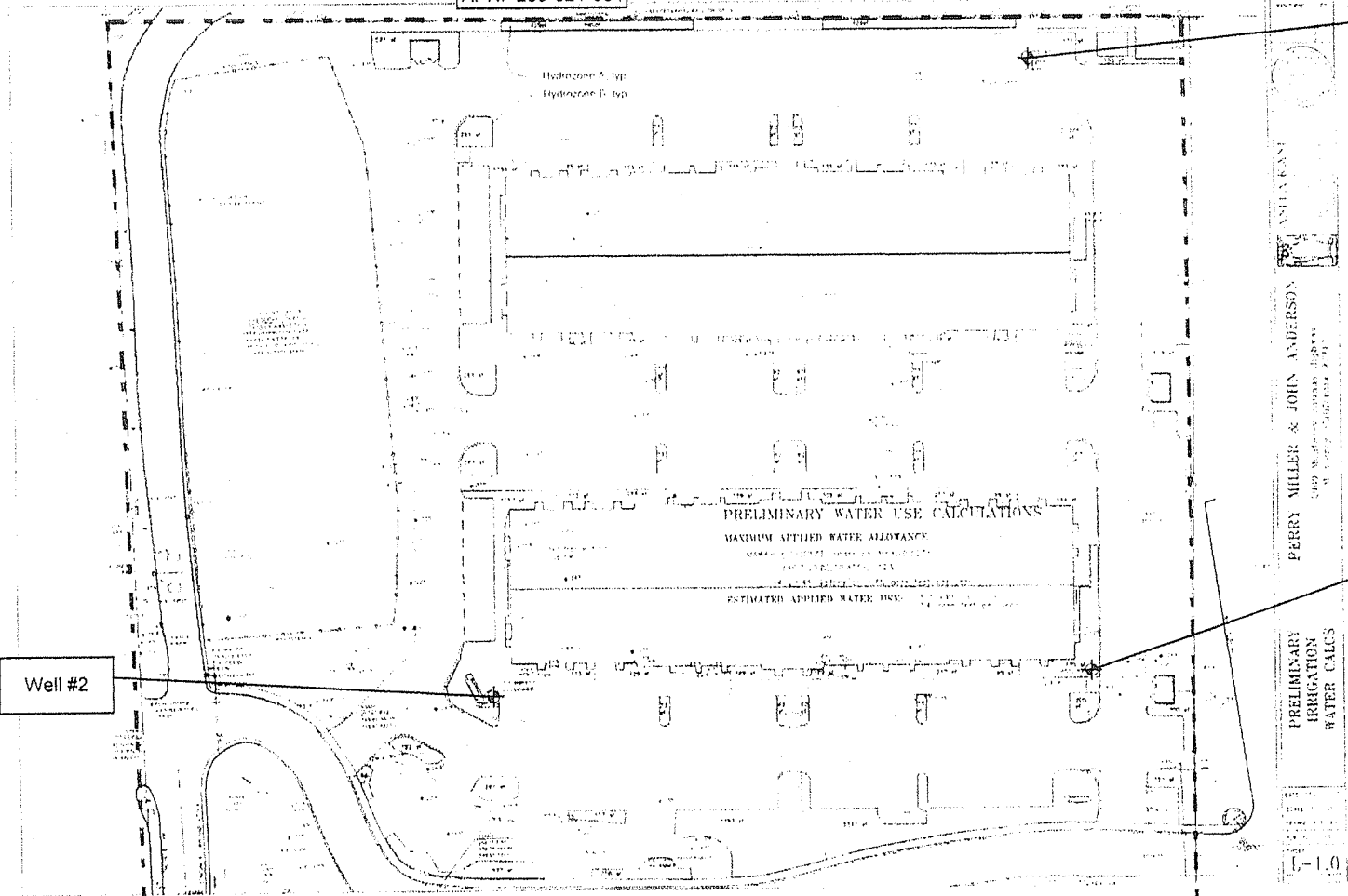


APN: 259-021-004



Well #1

Well #3

Well #2

PRELIMINARY WATER USE CALCULATIONS
 MAXIMUM APPLIED WATER ALLOWANCE
 ESTIMATED APPLIED WATER USE

PERRY MILLER & JOHN ANDERSON
 3099 N. Highway 101, Suite 201
 San Jose, CA 95131
 PRELIMINARY IRRIGATION WATER CALCS
 1-1.0

- NOTES:
- 1) Base Map from supplied by property owner.
 - 2) Preliminary Water Use Calculations completed by Anita Kane, Landscape Architect. Additional Information included in Appendix B.



SITE MAP
 APN: 259-021-004
 Monterey County, California

FIGURE
2

By: A. Bierman, January 18, 2006
 File: Anderson\Figures\SiteMap.cvr

Attachment 1 to Conditions of Approval