

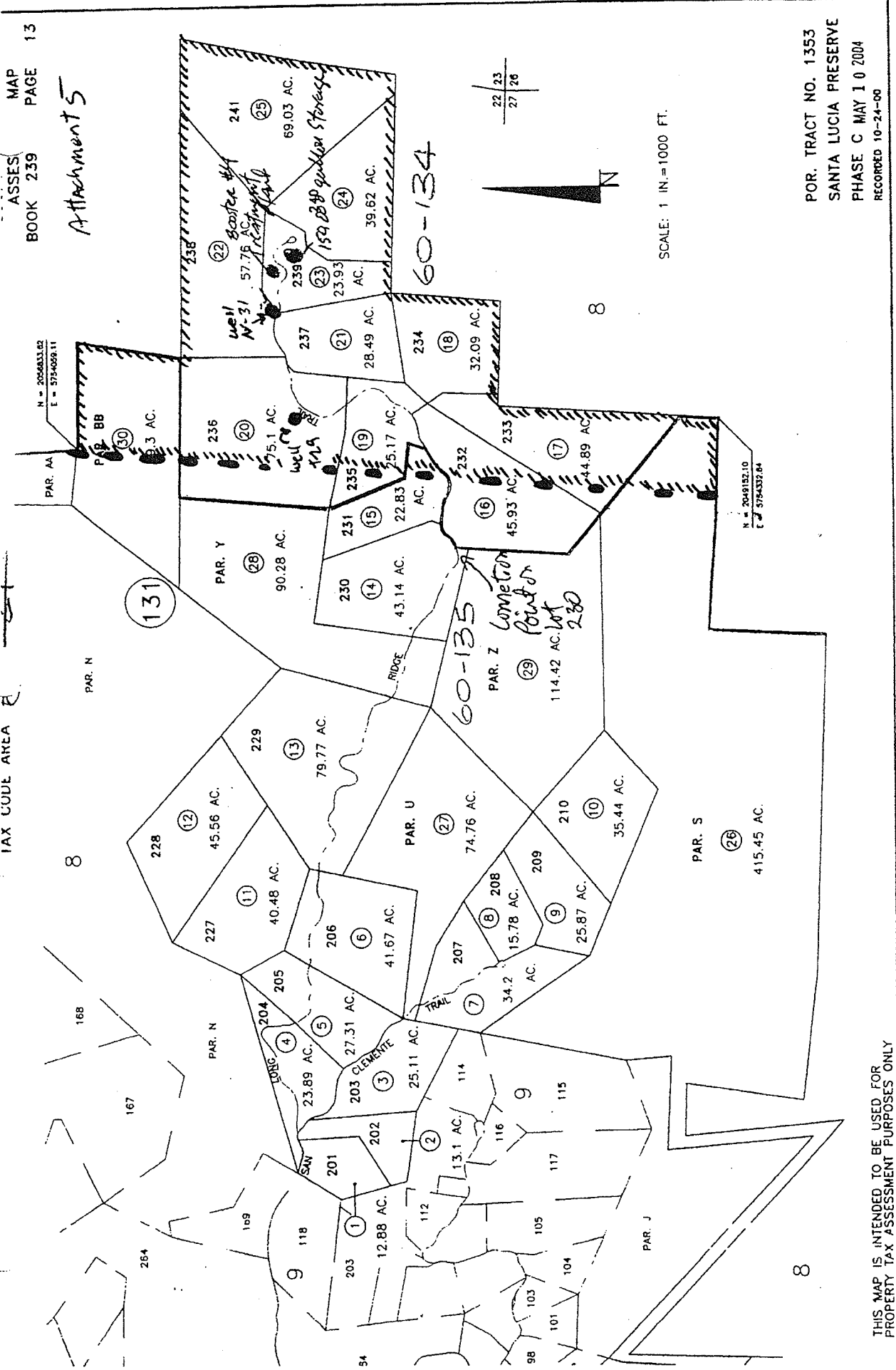
*Attachment 1 to Conditions
of Approval*

EXHIBIT A

Assessor's Parcel Numbers with acreage shown for each Parcel, Open Space, and Home Lands
Well N-31 addition to Existing Water Supply Line

<u>Lot</u>	<u>Parcel</u>	<u>Open</u>	<u>Home</u>	<u>A.P.N.</u>	
231	26.98	22.83	4.15	239-131-015	(partially in MPWMD)
232	49.58	45.93	3.65	239-131-016	(partially in MPWMD)
233	47.60	44.89	2.71	239-131-017	
234	34.61	32.09	2.52	239-131-018	
235	29.36	25.17	4.19	239-131-019	
236	81.10	75.10	6.00	239-131-020	
237	31.43	28.49	2.94	239-131-021	
238	61.11	57.76	3.35	239-131-022	
239	26.18	23.93	2.25	239-131-023	
240	42.86	39.62	3.24	239-131-024	
241	75.33	69.03	6.30	239-131-025	
BB	69.30	---	---	239-131-026	Open Space (partially in MPWMD)
Z	114.42	---	---	239-131-028	Open Space (partially in MPWMD)
S	415.45	---	---	239-131-030	Open Space (partially in MPWMD)

Attachment 5



POR. TRACT NO. 1353
 SANTA LUCIA PRESERVE
 PHASE C MAY 10 2004
 RECORDED 10-24-00

THIS MAP IS INTENDED TO BE USED FOR
 PROPERTY TAX ASSESSMENT PURPOSES ONLY

Well 10-31 Addition
 to Existing Water
 Distribution System

land in
 MPWMD

Water System Components
 MPWMD Boundary (approx)
 water line (Existing 9" main
 in MPWMD)

MPWMD
 Boundary