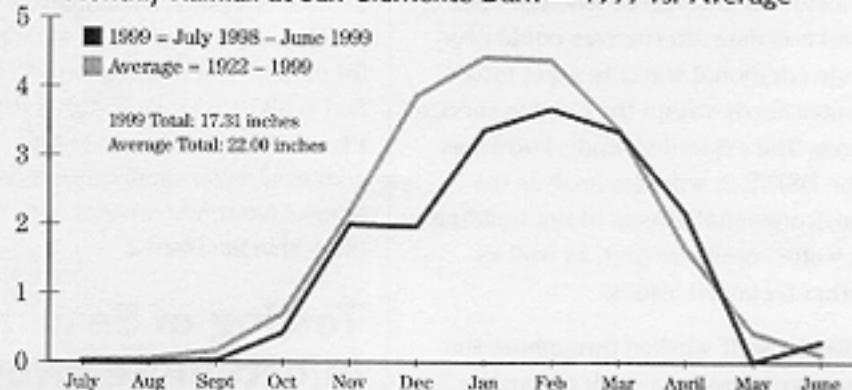


# Water Production Report

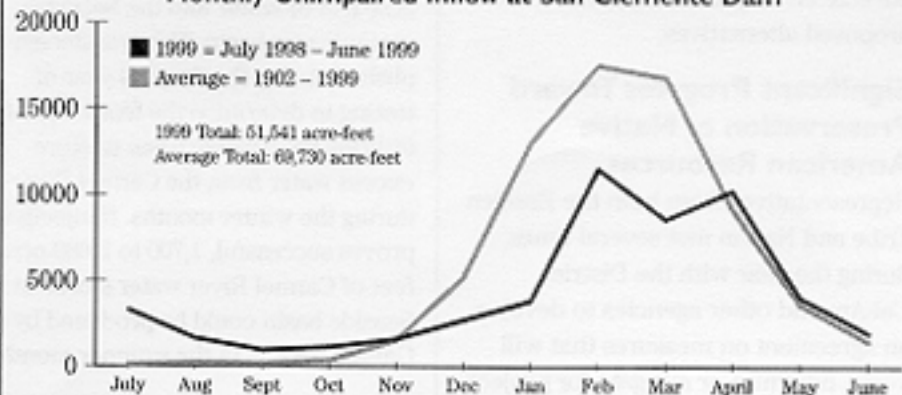
**Two Percent Reduction in Total District Water Production**  
*Water Year 1999 was a below average year in terms of rainfall and runoff in the Upper Carmel River Basin. Water production within the District was approximately 17,762 acre-feet during the July 1998 through June 1999 reporting period. This represents a two percent reduction from 1998 production.*

**Monthly Rainfall at San Clemente Dam — 1999 vs. Average**



In 1999, 17.31 inches of rainfall were measured at San Clemente Dam, which is 81% of the average annual rainfall.

**Monthly Unimpaired Inflow at San Clemente Dam**



In 1999, 51,541 acre-feet of unimpaired inflow was estimated at San Clemente Dam, which is 74% of the average inflow. Unimpaired inflow refers to the flow that would have occurred under natural conditions without any diversion or storage facilities.

## Monterey Peninsula Water Resources System

Over 93 percent of the District's water is derived from a network of water sources collectively known as the Monterey Peninsula Water Resources System (MPWRS), which includes the Carmel River and its tributaries, the Carmel Valley Alluvial Aquifer, and the Seaside Coastal Ground Water basin. The District's Water Allocation Program limits MPWRS production to 20,687 acre-feet per year. During the 1998-1999 reporting year, production totaled 16,537 acre-feet. Production from wells and water distribution systems outside of the MPWRS was approximately 1,225 acre-feet of water.