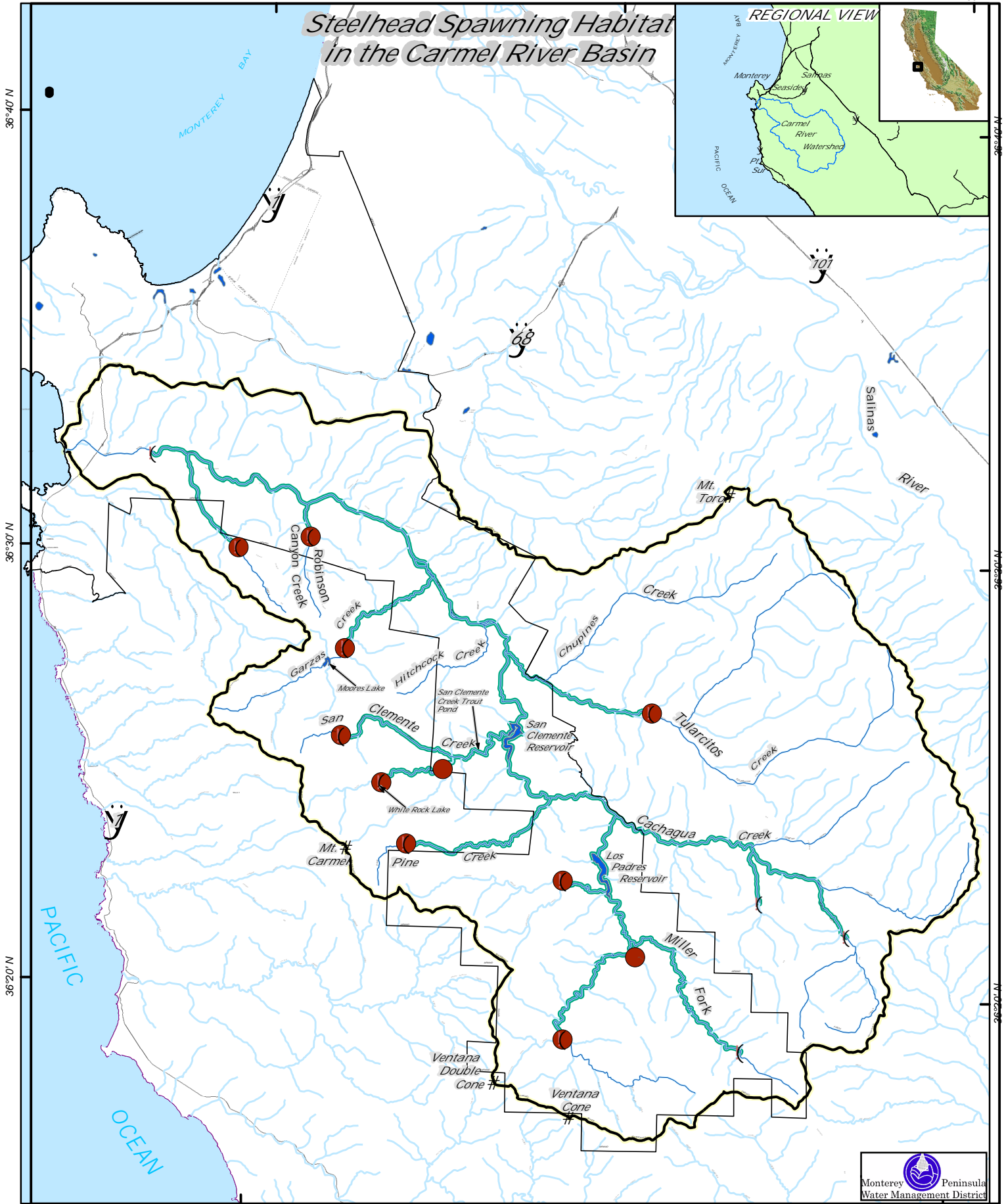


121°50' W

121°40' W

121°30' W

Steelhead Spawning Habitat in the Carmel River Basin



121°50' W

LEGEND

121°40' W

121°30' W

#	Peaks	●	Steelhead Habitat Barrier	—	MPWMD Boundary
()	Spawning Habitat extent	~	Streams & Rivers	⊂	Carmel River Watershed
		—	Perennial Spawning Habitat		